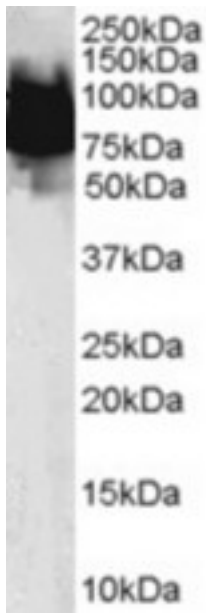


**KLF4 Goat anti-Human Polyclonal (N-Terminus) Antibody - LS-C55037 - LSBio**

<b>CatalogID:</b>	LS-C55037
<b>Target:</b>	Kruppel-like factor 4 (gut) (KLF4)
<b>Synonyms:</b>	KLF4 Antibody, EZF Antibody, GKLF Antibody, Kruppel-like factor 4 (gut) Antibody, Hezf Antibody, Krueppel-like factor 4 Antibody
<b>Host</b>	KLF4 antibody was produced in Goat
<b>Clonality:</b>	Polyclonal
<b>Immunogen Species:</b>	KLF4 antibody was raised against Human
<b>Antigen Type:</b>	Synthetic peptide
<b>Immunogen:</b>	KLF4 antibody was raised against synthetic peptide AVSDALLPSFST-C from the N-terminus of human KLF4 (NP_004226.2). Percent identity by BLAST analysis: Human, Gorilla, Monkey, Marmoset, Mouse, Rat, Hamster, Elephant, Panda, Bovine, Cat, Dog, Bat, Horse, Rabbit, Pig (100%); Trichomonas (83%).
<b>Specificity:</b>	Human KLF4.
<b>Epitope:</b>	N-Terminus
<b>Reactivity:</b>	Human, Gorilla, Monkey, Mouse, Rat, Bat, Bovine, Dog, Hamster, Horse, Pig, Rabbit
<b>Purification:</b>	Immunoaffinity purified
<b>Presentation:</b>	Tris-buffered saline, pH 7.3, 0.5% BSA, 0.02% sodium azide
<b>Recommended Storage:</b>	Store at -20°C. Minimize freezing and thawing.
<b>Uses:</b>	Western blot (1:64000) & (0.1 µg/ml), ELISA (1:64000) (Optimal dilution to be determined by the researcher)
<b>Size:</b>	100 µg
<b>Concentration:</b>	0.5 mg/ml

**Western Blot Image:**



Antibody (0.1 ug/ml) staining of Human Duodenum lysate (35 ug protein in RIPA buffer).  
Primary incubation was 1 hour. Detected by chemiluminescence.

**Requested From:**

Japan

Laboratory Reagent For In Vitro Research Use Only

Not for resale without prior written consent from LifeSpan BioSciences, Inc.

Created on 10/2/2014

© 2014 LifeSpan BioSciences