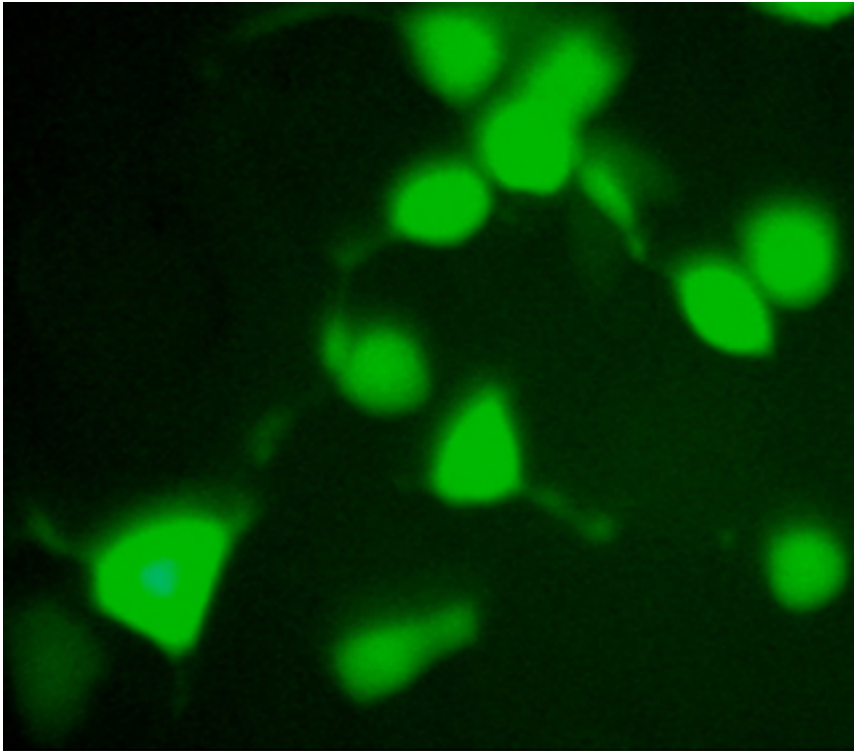


**Myc Tag Mouse Monoclonal Antibody - LS-C51564 - LSBio**

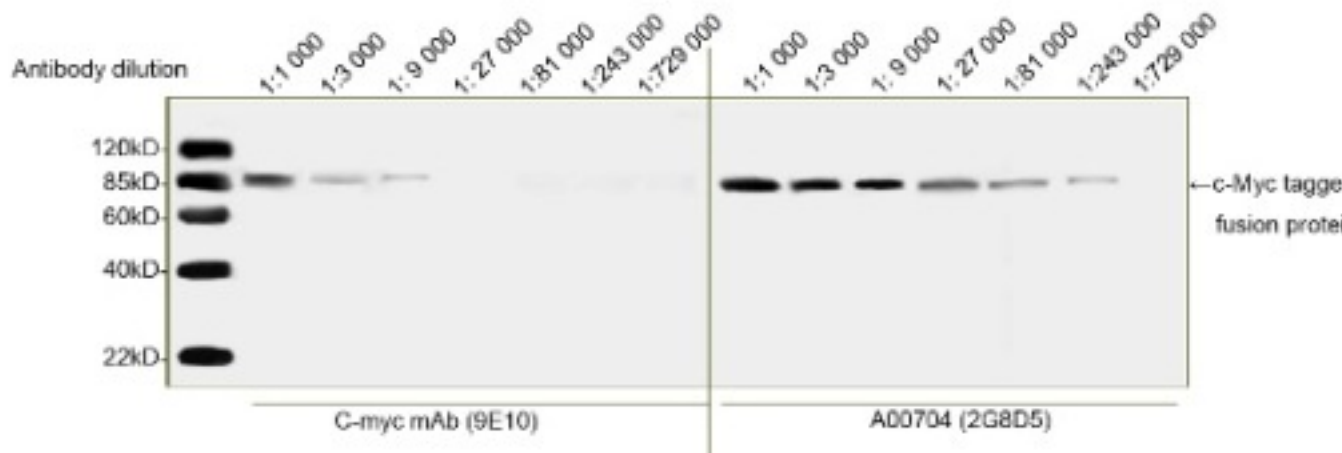
<b>CatalogID:</b>	LS-C51564
<b>Target:</b>	Myc Tag
<b>Host</b>	Myc Tag antibody was produced in Mouse
<b>Clonality:</b>	Monoclonal
<b>Isotype:</b>	IgG2a
<b>Antigen Type:</b>	Synthetic peptide - KLH conjugated
<b>Immunogen:</b>	Myc Tag antibody was raised against a synthetic peptide corresponding to residues 410-419 (EQKLISEEDL) coupled to KLH. Percent identity by BLAST analysis: Human, Chimpanzee, Gorilla, Mouse, Rat (100%); Orangutan, Monkey, Marmoset, Tamarin, Panda, Cat (90%); Horse, Pufferfish, Paramecium, Salpingoeca (80%).
<b>Specificity:</b>	C-terminal, N-terminal, and internal c-Myc tagged fusion proteins expressed in prokaryotic or eukaryotic cells. It also recognizes c-Myc genes in human cancers, such as Hela whole cell lysates
<b>Purification:</b>	Protein A purified
<b>Reconstitution:</b>	deionized water. Possible additional volumes for resuspension: 40 µl
<b>Presentation:</b>	Lyophilized.
<b>Recommended Storage:</b>	Long term: -20°C; Short term: +4°C. Avoid repeat freeze-thaw cycles.
<b>Uses:</b>	Immunofluorescence, Western blot, Immunoprecipitation, ELISA (Optimal dilution to be determined by the researcher)
<b>Size:</b>	40 µg or 100 µg

### Immunocytochemistry Image:



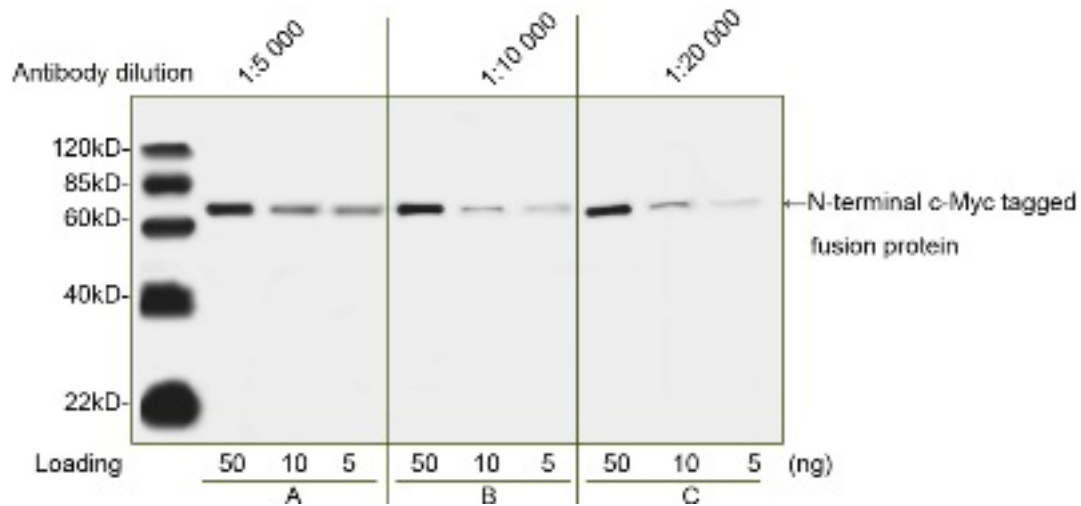
Immunofluorescence of 293 cells transfected with c-Myc tag protein using THETM Anti-c-Myc -tag Monoclonal Antibody (Mouse) LS-C51564

### Western Blot Image:



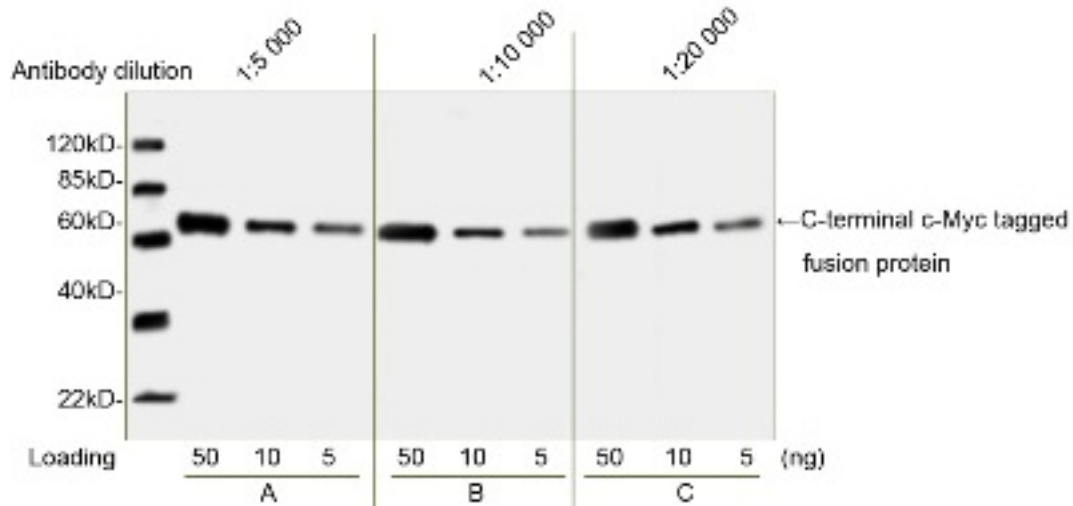
Western blot discovers working concentration comparison of THETM c-Myc Tag Antibody, mAb, Mouse with Mouse Anti-c-Myc mAb (9E10), showing LS-C51564 poses excellent performance in WB assay with surprising antibody dilution. Both c-Myc antibodies starting dilution are from 1:1000 (equivalent to 1.0 ug/ml) in assay. The signal was developed with IRDye 800 Conjugated affinity Purified Goat Anti-Mouse IgG.

**Western Blot Image:**



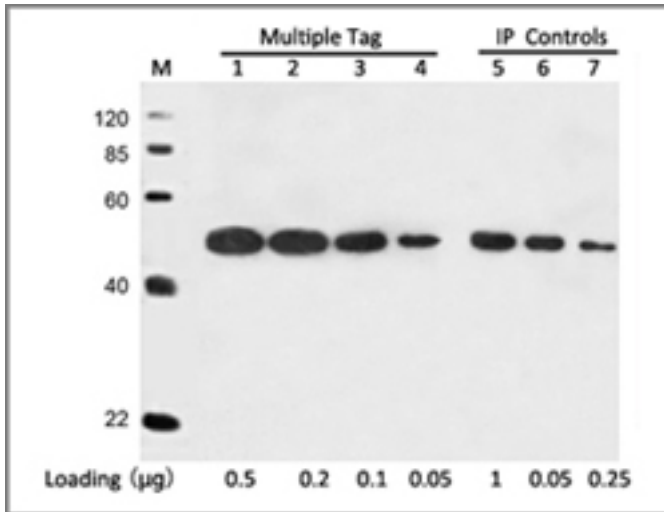
Sensitivity analysis of THETM c-Myc Tag Antibody, mAb, Mouse with series of loading amounts and antibody concentration. A: 0.2 ug/ml c-Myc Tag Antibody (equivalent to 1:5000 diluted from 1.0 mg/ml) B: 0.1 ug/ml c-Myc Tag Antibody (equivalent to 1:10 000 diluted from 1.0 mg/ml) C: 0.05 ug/ml c-Myc Tag Antibody (equivalent to 1:20 000 diluted from 1.0 mg/ml) The signal was developed with IRDye 800 Conjugated affinity Purified Goat Anti-Mouse IgG

**Western Blot Image:**



Sensitivity analysis of THETM c-Myc Tag Antibody, mAb, Mouse with series of loading amounts and antibody concentration. A: 0.2 ug/ml c-Myc Tag Antibody (equivalent to 1:5000 diluted from 1.0 mg/ml) B: 0.1 ug/ml c-Myc Tag Antibody (equivalent to 1:10 000 diluted from 1.0 mg/ml) C: 0.05 ug/ml c-Myc Tag Antibody (equivalent to 1:20 000 diluted from 1.0 mg/ml) The signal was developed with IRDye 800 Conjugated affinity Purified Goat Anti-Mouse IgG

**Western Blot Image:**



20 ug Multiple Tag Cell Lysate (M0100) was used for the IP using THETM Anti-c-Myc-tag Monoclonal Antibody (Mouse) LS-C51564 and half of th IP was loaded on the gel. The Western blot was performed by One-Step IP-Western Kit (Mouse) (L00232)

**Requested From:**

Japan

Laboratory Reagent For In Vitro Research Use Only

Not for resale without prior written consent from LifeSpan BioSciences, Inc.

Created on 10/2/2014

© 2014 LifeSpan BioSciences