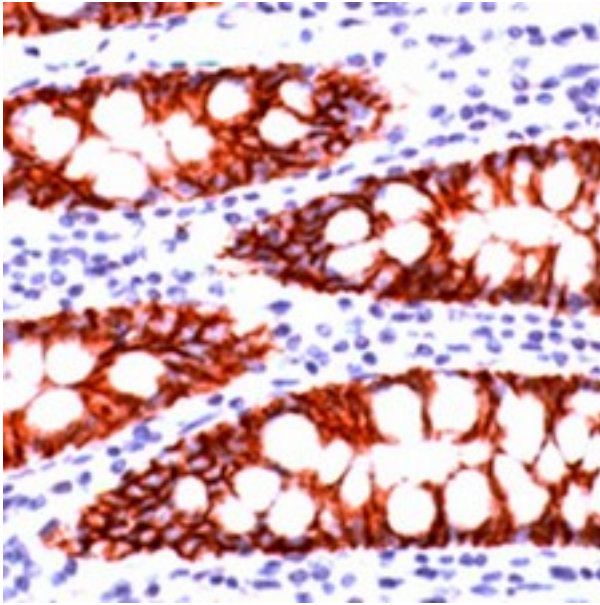


CLDN3 / Claudin 3 Rabbit anti-Mouse Polyclonal (C-Terminus) Antibody - LS-C50648 - LSBio

CatalogID:	LS-C50648
Target:	claudin 3 (CLDN3)
Synonyms:	CLDN3 Antibody, C7orf1 Antibody, Claudin-3 Antibody, CPE-R 2 Antibody, Claudin 3 Antibody, RVP1 Antibody, CPE-R2 Antibody, CPE-receptor 2 Antibody, CPETR2 Antibody, HRVP1 Antibody
Family / Subfamily:	Claudin / not assigned-Claudin
Host	CLDN3 antibody was produced in Rabbit
Clonality:	Polyclonal
Immunogen Species:	CLDN3 / Claudin 3 antibody was raised against Mouse
Antigen Type:	Synthetic peptide
Immunogen:	CLDN3 / Claudin 3 antibody was raised against a synthetic peptide derived from the C-terminus of mouse Claudin-3.
Epitope:	C-Terminus
Reactivity:	Mouse, Human, Rat
Purification:	Immunoaffinity purified
Presentation:	10 mM PBS, pH 7.4, BSA, sodium azide.
Recommended Storage:	Long term: -20°C; Short term: +4°C. Avoid repeat freeze-thaw cycles.
Uses:	IHC (1:100) (Optimal dilution to be determined by the researcher)
Size:	250 µl

Immunohistochemistry Image:



Small intestine stained with Anti-Claudin 3 antibody

Requested From:

Japan

Laboratory Reagent For In Vitro Research Use Only

Not for resale without prior written consent from LifeSpan BioSciences, Inc.

Created on 10/2/2014

© 2014 LifeSpan BioSciences