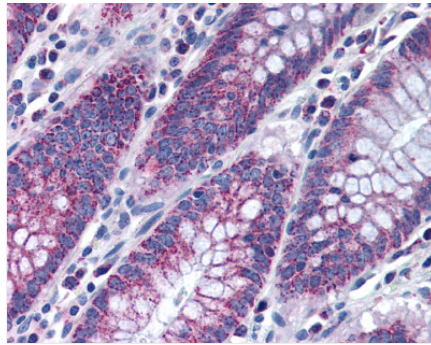


**Zinc Finger Transcription Factor Hezf (KLF4) Rabbit anti-Human Polyclonal Antibody**

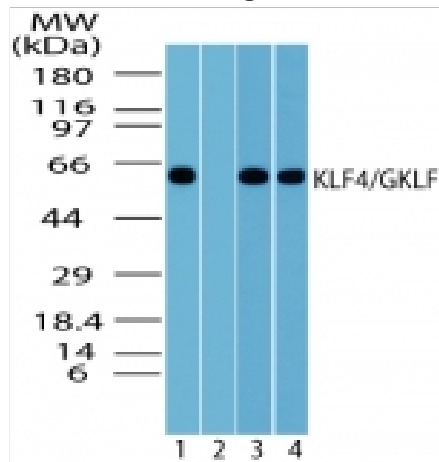
<b>CatalogID:</b>	LS-C47390
<b>Target Protein:</b>	Zinc Finger Transcription Factor Hezf (KLF4)
<b>Host:</b>	Rabbit
<b>Clonality:</b>	Polyclonal
<b>Isotype:</b>	IgG
<b>Antigen Species:</b>	Human
<b>Antigen Type:</b>	Synthetic peptide
<b>Epitope:</b>	A portion of amino acids 1-50 of human KLF4
<b>Species Reactivity:</b>	Bovine, Human, Monkey, Mouse, Rat
<b>Purification:</b>	Protein G column
<b>Weight:</b>	100 µg
<b>Presentation:</b>	PBS containing 0.2% gelatin and 0.05% sodium azide
<b>Uses:</b>	WB (1 - 3 µg/ml ) (Optimal dilution to be determined by the researcher)

**Immunohistochemistry Image:**



Colon

**Western Blot Image:**



Western blot analysis of KLF4 in 293 cell lysate in the 1) absence, and 2) presence of immunizing peptide, 3) 3T3 and 4) RAW cell lysate using antibody at 1 ug/ml (293) and 2 ug/ml (3T3 and RAW).

**Gene Synonyms:**

KLF4, EZF, GKLF, epithelial zinc-finger protein ezf, ezf, hezf

Laboratory Reagent For In Vitro Research Use Only

Created on 6/24/2008

© 2008 LifeSpan BioSciences