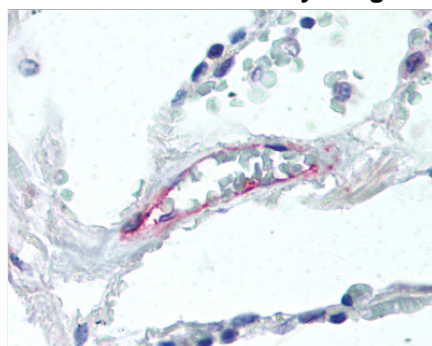


Duffy Antigen (DARC) Mouse anti-Human Monoclonal (PE) Antibody

CatalogID:	LS-C36137
Target:	Duffy Antigen (DARC)
Synonyms:	DARC, CCBP1, CD234, DFY, FY, GPD, GPFY, ccbp1, darc, duffy antigen, duffy blood group, duffy group antigen, fy glycoprotein, gpfy
Family / Subfamily:	GPCR / Chemokine
Host:	Mouse
Clonality:	Monoclonal
Isotype:	IgG2a
Modifications:	Phycoerythrin (PE)
Antigen Species:	Human
Antigen Type:	Cells
Immunogen:	HEK293 cells transfected with human DARC, Accession # CAA59770
Specificity:	Recognizes human DARC. Species sequence homology: Mouse 60%
Species Reactivity:	Human
Purification:	Purified
Volume:	100 μ l
Presentation:	PBS, 0.01% sodium azide
Recommended Storage:	+4°C, avoid freezing
Uses:	Flo (Optimal dilution to be determined by the researcher)

Immunohistochemistry Image:



Lung, vessel

Summary:

PE

Duffy blood group antigens, part of the Chemokine Receptor family, appear to be multimeric erythrocyte-membrane protein receptors composed of different subunits. A glycoprotein, GPD, is the major subunit of the protein complex. Other components include the Rh, PGM1, Fy, and PEPC proteins. Duffy antigen is expressed by red blood cells, by postcapillary venule endothelium throughout the body, except in the liver, and by Purkinje cells of the cerebellum. Duffy negativity (lack of Duffy expression in bone marrow) has been linked to protection against malaria. In erythrocytes, the chemokines interleukin-8 and melanoma growth stimulatory activity (MGSA) activate Duffy antigen.

Laboratory Reagent For In Vitro Research Use Only

Created on 1/23/2009

© 2009 LifeSpan BioSciences