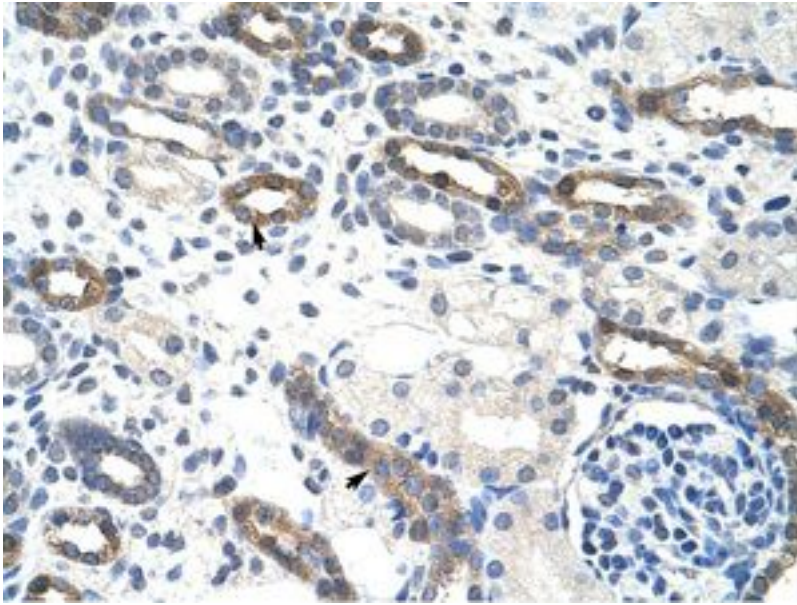


OVOL1 Rabbit anti-Human Polyclonal (C-Terminus) Antibody - LS-C31541 - LSBio

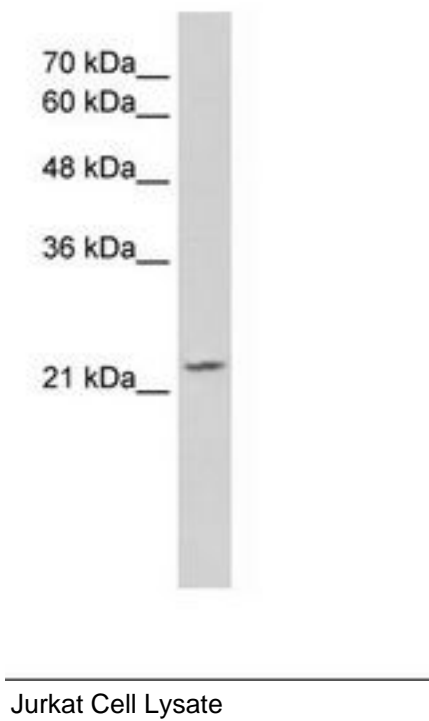
CatalogID:	LS-C31541
Target:	ovo-like zinc finger 1 (OVOL1)
Synonyms:	OVOL1 Antibody, HOVO1 Antibody, Ovo-like 1(Drosophila) Antibody, Ovo homolog-like 1 Antibody
Host	OVOL1 antibody was produced in Rabbit
Clonality:	Polyclonal
Isotype:	IgG
Immunogen Species:	OVOL1 antibody was raised against Human
Immunogen:	OVOL1 antibody was raised against synthetic peptide from C-Terminus of human OVOL1 (O14753, NP_004552). Percent identity by BLAST analysis: Human, Chimpanzee, Gorilla, Orangutan, Gibbon, Baboon, Monkey, Galago, Marmoset, Rat, Goat, Elephant, Dog, Bovine, Bat, Horse, Pig, Opossum, Guinea pig (100%); Mouse, Rabbit, Platypus (92%).
Specificity:	Human OVOL1
Epitope:	C-Terminus
Reactivity:	Human, Chimpanzee, Orangutan, Gibbon, Monkey, Rat, Bat, Bovine, Dog, Goat, Guinea pig, Horse, Pig
Predicted Reactivity:	Mouse, Rabbit
Purification:	Protein A purified
Reconstitution:	Distilled water. Possible additional volumes for resuspension: 100 µl
Presentation:	Lyophilized from PBS with 2% sucrose
Recommended Storage:	Long term: -20°C, the use of 50% glycerol is recommended if storing aliquots in -20°C for long term use (up to 1 year); Short term (less than one week): +4°C. Avoid repeat freeze-thaw cycles.
Uses:	IHC, Western blot (2 µg/ml) (Optimal dilution to be determined by the researcher)
Size:	100 µg
Concentration:	1 mg/ml (after resuspension)

Immunohistochemistry Image:



OVOL1 antibody LS-C31541 was used in IHC to stain formalin-fixed, paraffin-embedded human kidney.

Western Blot Image:



Requested From:

Japan

Laboratory Reagent For In Vitro Research Use Only

Not for resale without prior written consent from LifeSpan BioSciences, Inc.

Created on 10/1/2014

© 2014 LifeSpan BioSciences