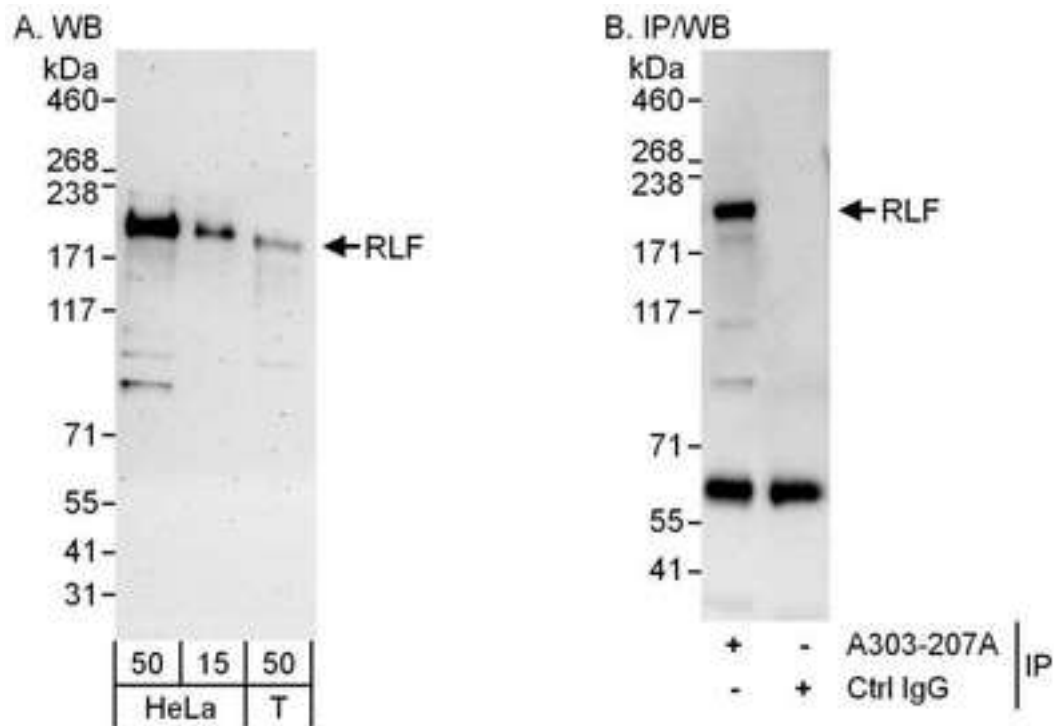


RLF Rabbit anti-Human Polyclonal (aa500-550) Antibody - LS-C289902 - LSBio

CatalogID:	LS-C289902
Target:	rearranged L-myc fusion (RLF)
Synonyms:	RLF Antibody, Zinc finger protein Rlf Antibody, Zn-15 related Antibody, Rearranged L-myc fusion Antibody, Zn-15-related protein Antibody, ZN-15L Antibody, ZNF292L Antibody
Host	RLF antibody was produced in Rabbit
Clonality:	Polyclonal
Isotype:	IgG
Immunogen Species:	RLF antibody was raised against Human
Specificity:	Region between residue 500 and 550 of human Rearranged L-Myc Fusion using the numbering given in entry NP_036553.2 (GeneID 6018).
Epitope:	aa500-550
Reactivity:	Human, Mouse, Rat, Bovine, Dog, Guinea pig, Pig, Rabbit
Purification:	Immunoaffinity purified
Presentation:	Tris-citrate/phosphate buffer, pH 7-8, 0.09% sodium azide.
Recommended Storage:	Store at 2-8°C for up to 1 year.
Uses:	Western blot (1:2000 - 1:10000), Immunoprecipitation (2 - 10 µg/mg lysate) (Optimal dilution to be determined by the researcher)
Size:	100 µl
Manufacturer:	Bethyl Laboratories, Inc.

Western Blot Image:



Detection of Human RLF by Western Blot and Immunoprecipitation. Samples: Whole cell lysate from HeLa (15 and 50 ug for WB; 1 mg for IP, 20% of IP loaded) and 293T (T; 50 ug) cells. Antibodies: Affinity purified rabbit anti-RLF antibody used for WB at 0.1 ug/ml (A) and 1 ug/ml (B) and used for IP at 6 ug/mg lysate. Detection: Chemiluminescence with exposure times of 3 minutes (A) and 10 seconds (B).

Requested From:

Japan

Laboratory Reagent For In Vitro Research Use Only

Not for resale without prior written consent from LifeSpan BioSciences, Inc.

Created on 10/1/2014

© 2014 LifeSpan BioSciences