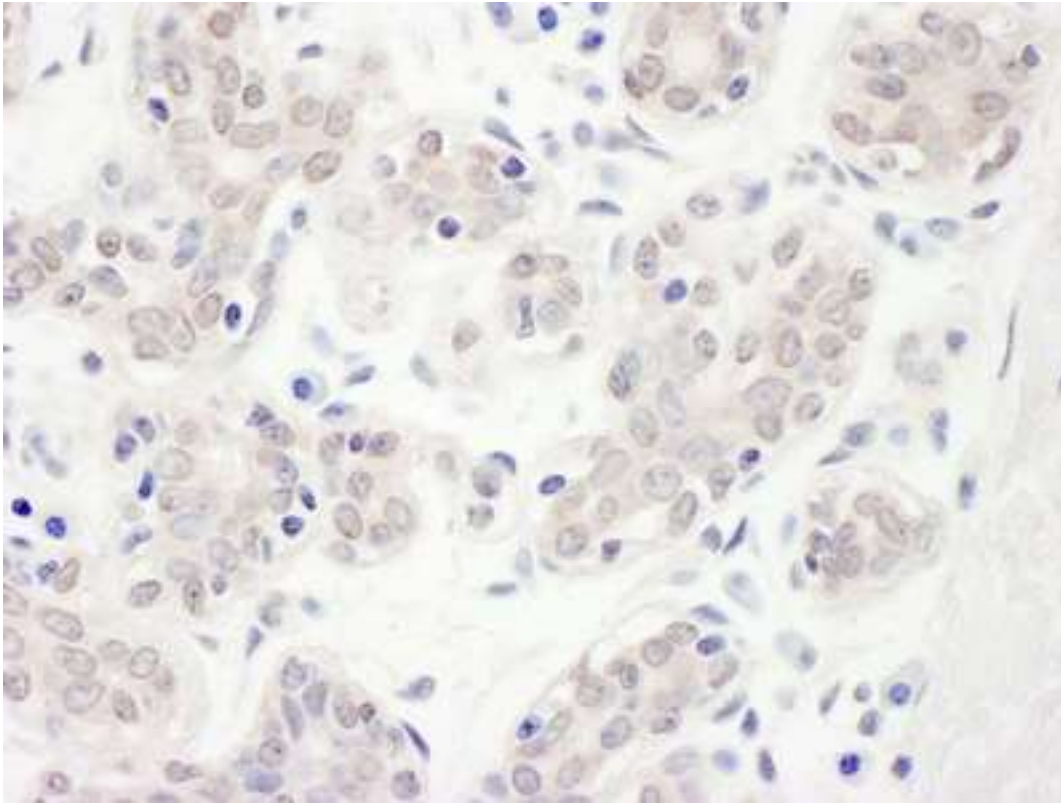


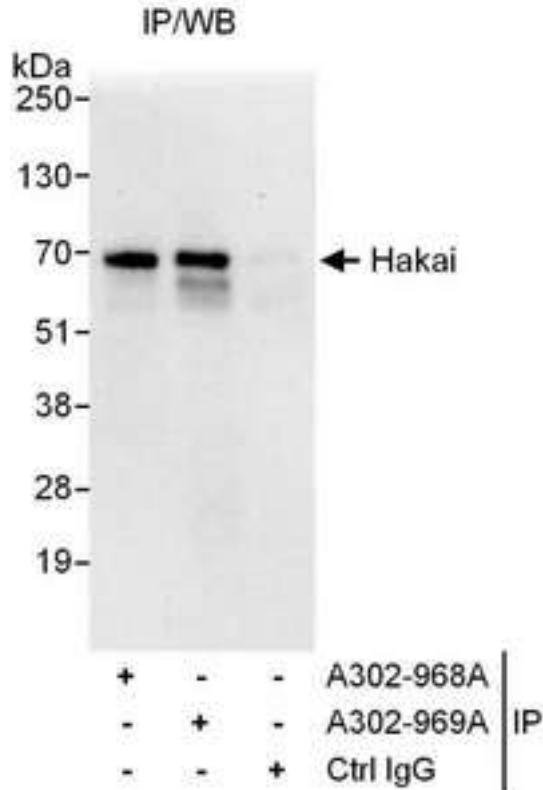
CBLL1 / HAKAI Rabbit anti-Human Polyclonal (aa1-50) Antibody - LS-C289671 - LSBio	
CatalogID:	LS-C289671
Target:	Cbl proto-oncogene-like 1, E3 ubiquitin protein ligase (CBLL1)
Synonyms:	CBLL1 Antibody, C-Cbl-like protein 1 Antibody, E-cadherin binding protein E7 Antibody, HAKAI Antibody, RING finger protein 188 Antibody, RNF188 Antibody
Host	CBLL1 antibody was produced in Rabbit
Clonality:	Polyclonal
Isotype:	IgG
Immunogen Species:	CBLL1 / HAKAI antibody was raised against Human
Specificity:	Region between residue 1 and 50 of human E3 ubiquitin-protein ligase Hakai using the numbering given in entry NP_079090.2 (GeneID 79872).
Epitope:	aa1-50
Reactivity:	Human, Chimpanzee, Orangutan, Rabbit
Purification:	Immunoaffinity purified
Presentation:	Tris-citrate/phosphate buffer, pH 7-8, 0.09% sodium azide.
Recommended Storage:	Store at 2-8°C for up to 1 year.
Usage Summary:	Immunohistochemistry: Antigen retrieval with citrate buffer pH 6.0 is recommended for FFPE tissue sections. Human controls: Breast Carcinoma, Ovarian Carcinoma.
Uses:	IHC - Paraffin (1:500 - 1:2000), Immunofluorescence (1:250 - 1:1000), Immunoprecipitation (2 - 5 µg/mg lysate) (Optimal dilution to be determined by the researcher)
Uses Not Recommended:	Western blot
Size:	100 µl
Manufacturer:	Bethyl Laboratories, Inc.

Immunohistochemistry Image:



Detection of Human Hakai by Immunohistochemistry. Sample: FFPE section of human breast carcinoma. Antibody: Affinity purified rabbit anti-Hakai used at a dilution of 1:1000 (1 ug/ml). Detection: DAB.

Western Blot Image:



Detection of Human Hakai by Western Blot of Immunoprecipitates. Samples: Whole cell lysate (1 mg for IP, 20% of IP loaded) from HeLa cells. Antibodies: Affinity purified rabbit anti-Hakai antibody used for IP at 3 ug/mg lysate. Hakai was also immunoprecipitated by rabbit anti-Hakai antibody A302-969A, which recognizes a downstream epitope. For blotting immunoprecipitated Hakai, A302-969A was used at 1 ug/ml. Detection: Chemiluminescence with an exposure time of 10 seconds.

Requested From:

Japan

Laboratory Reagent For In Vitro Research Use Only

Not for resale without prior written consent from LifeSpan BioSciences, Inc.

Created on 9/30/2014

© 2014 LifeSpan BioSciences