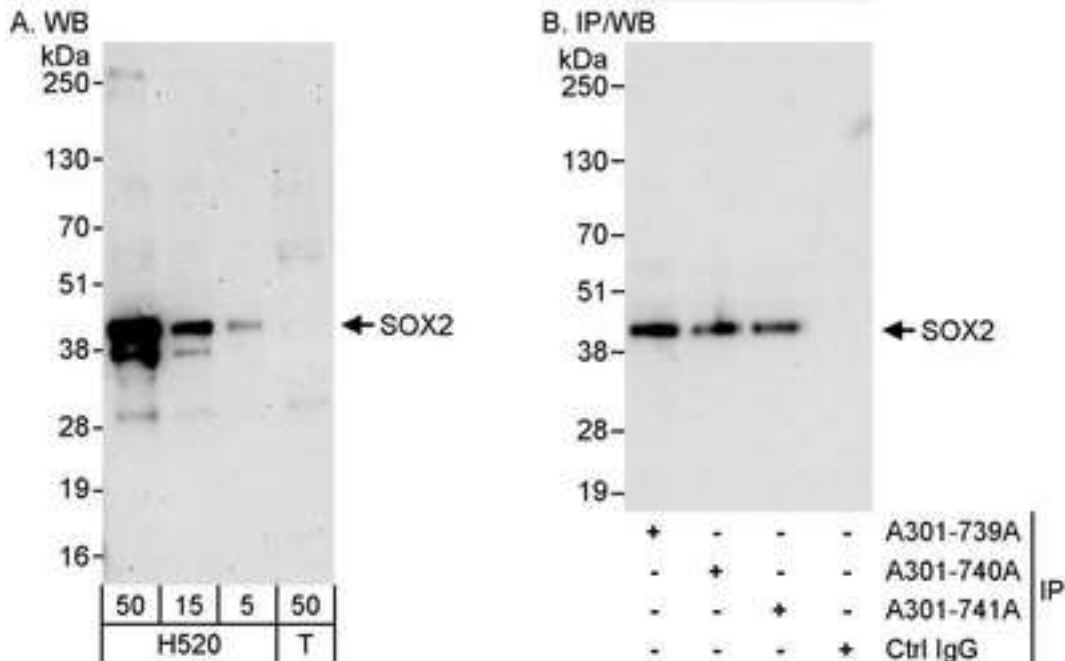


**SOX2 Rabbit anti-Human Polyclonal (aa150-200) Antibody - LS-C288526 - LSBio**

<b>CatalogID:</b>	LS-C288526
<b>Target:</b>	SRY (sex determining region Y)-box 2 (SOX2)
<b>Synonyms:</b>	SOX2 Antibody, MCOPS3 Antibody, Transcription factor SOX2 Antibody, ANOP3 Antibody, Transcription factor SOX-2 Antibody, SRY-related HMG-box gene 2 Antibody
<b>Family / Subfamily:</b>	Transcription factor
<b>Host</b>	SOX2 antibody was produced in Rabbit
<b>Clonality:</b>	Polyclonal
<b>Isotype:</b>	IgG
<b>Immunogen Species:</b>	SOX2 antibody was raised against Human
<b>Specificity:</b>	Region between residue 150 and 200 of human SRY (sex determining region Y)-box 2 using the numbering given in entry NP_003097.1 (GeneID 6657).
<b>Epitope:</b>	aa150-200
<b>Reactivity:</b>	Human, Bovine, Dog, Goat, Guinea pig, Horse, Rabbit, Sheep
<b>Purification:</b>	Immunoaffinity purified
<b>Presentation:</b>	Tris-buffered saline, 0.1% BSA, 0.09% sodium azide.
<b>Recommended Storage:</b>	Store at 2-8°C for up to 1 year.
<b>Uses:</b>	Western blot (1:2000 - 1:10000), Immunoprecipitation (2 - 5 µg/mg lysate) (Optimal dilution to be determined by the researcher)
<b>Size:</b>	100 µl
<b>Manufacturer:</b>	Bethyl Laboratories, Inc.

**Western Blot Image:**



Detection of Human SOX2 by Western Blot and Immunoprecipitation. Samples: Whole cell lysate from H520 (5, 15 and 50 ug for WB; 1 mg for IP, 20% of IP loaded) and 293T (T; 50 ug) cells. Antibodies: Affinity purified rabbit anti-SOX2 antibody used for WB at 0.04 ug/ml (A) and 1 ug/ml (B) and used for IP at 3 ug/mg lysate. SOX2 was also immunoprecipitated by rabbit anti-SOX2 antibodies A301-740A and A301-741A, which recognize downstream epitopes. Detection: Chemiluminescence with exposure times of 3 minutes (A) and 3 seconds (B).

**Requested From:**

Japan

Laboratory Reagent For In Vitro Research Use Only

Not for resale without prior written consent from LifeSpan BioSciences, Inc.

Created on 9/30/2014

© 2014 LifeSpan BioSciences