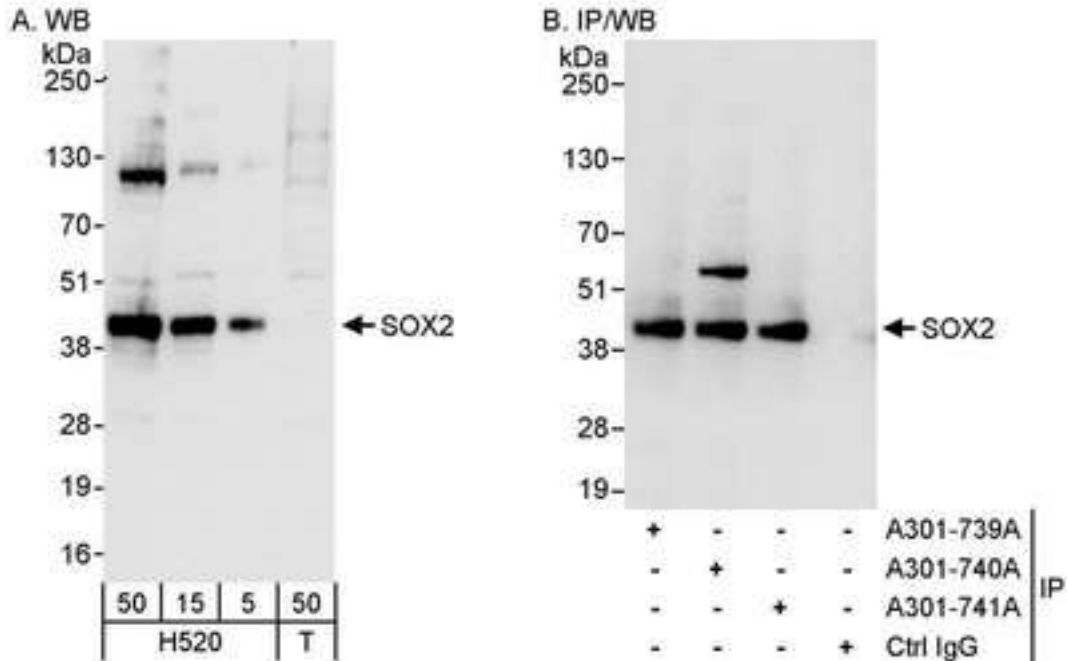


SOX2 Rabbit anti-Human Polyclonal (aa250-300) Antibody - LS-C288525 - LSBio

| | |
|-----------------------------|--------------------------------------------------------------------------------------------------------------------------------------------------------------|
| CatalogID: | LS-C288525 |
| Target: | SRY (sex determining region Y)-box 2 (SOX2) |
| Synonyms: | SOX2 Antibody, MCOPS3 Antibody, Transcription factor SOX2 Antibody, ANOP3 Antibody, Transcription factor SOX-2 Antibody, SRY-related HMG-box gene 2 Antibody |
| Family / Subfamily: | Transcription factor |
| Host | SOX2 antibody was produced in Rabbit |
| Clonality: | Polyclonal |
| Isotype: | IgG |
| Immunogen Species: | SOX2 antibody was raised against Human |
| Specificity: | Region between residue 250 and 300 of human SRY (sex determining region Y)-box 2 using the numbering given in entry NP_003097.1 (GeneID 6657). |
| Epitope: | aa250-300 |
| Reactivity: | Human, Mouse, Rat, Bovine, Dog, Horse, Pig, Rabbit, Sheep, Chicken |
| Purification: | Immunoaffinity purified |
| Presentation: | Tris-buffered saline, 0.1% BSA, 0.09% sodium azide. |
| Recommended Storage: | Store at 2-8°C for up to 1 year. |
| Uses: | Western blot (1:2000 - 1:10000), Immunoprecipitation (2 - 5 µg/mg lysate) (Optimal dilution to be determined by the researcher) |
| Size: | 100 µl |
| Manufacturer: | Bethyl Laboratories, Inc. |

Western Blot Image:



Detection of Human SOX2 by Western Blot and Immunoprecipitation. Samples: Whole cell lysate from H520 (5, 15 and 50 ug for WB; 1 mg for IP, 20% of IP loaded) and 293T (T; 50 ug) cells. Antibodies: Affinity purified rabbit anti-SOX2 antibody used for WB at 0.04 ug/ml (A) and 1 ug/ml (B) and used for IP at 3 ug/mg lysate. SOX2 was also immunoprecipitated by rabbit anti-SOX2 antibodies A301-739A and A301-741A, which recognize other epitopes. Detection: Chemiluminescence with exposure times of 30 seconds (A) and 1 second (B).

Requested From:

Japan

Laboratory Reagent For In Vitro Research Use Only

Not for resale without prior written consent from LifeSpan BioSciences, Inc.

Created on 9/30/2014

© 2014 LifeSpan BioSciences