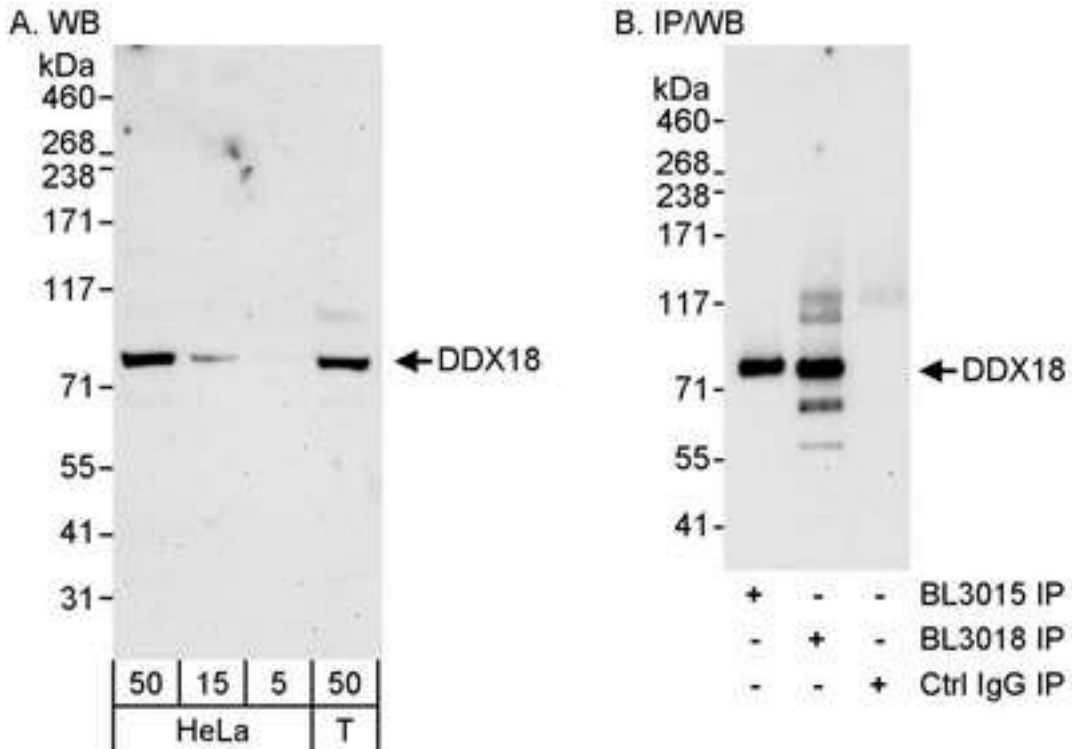


DDX18 Rabbit anti-Human Polyclonal (C-Terminus) Antibody - LS-C287506 - LSBio	
CatalogID:	LS-C287506
Target:	DEAD (Asp-Glu-Ala-Asp) box polypeptide 18 (DDX18)
Synonyms:	DDX18 Antibody, DEAD box protein 18 Antibody, Myc-regulated DEAD box protein Antibody, MrDb Antibody
Family / Subfamily:	DEAD box protein
Host	DDX18 antibody was produced in Rabbit
Clonality:	Polyclonal
Isotype:	IgG
Immunogen Species:	DDX18 antibody was raised against Human
Specificity:	Region between residue 625 and the C-terminus (residue 670) of human DEAD (Asp-Glu-Ala-Asp) Box Protein 18 using the numbering given in entry NP_006764.3 (GeneID 8886).
Epitope:	C-Terminus
Reactivity:	Human, Chimpanzee, Orangutan
Purification:	Immunoaffinity purified
Presentation:	Tris-buffered saline, 0.1% BSA, 0.09% sodium azide.
Recommended Storage:	Store at 2-8°C for up to 1 year.
Uses:	Western blot (1:2000 - 1:10000), Immunoprecipitation (1 - 4 µg/mg lysate) (Optimal dilution to be determined by the researcher)
Size:	100 µl
Manufacturer:	Bethyl Laboratories, Inc.

Western Blot Image:



Detection of Human DDX18 by Western Blot and Immunoprecipitation. Samples: Whole cell lysate from HeLa (5, 15 and 50 ug for WB; 1 mg for IP, 20% of IP loaded) and 293T (T; 50 ug for WB) cells. Antibodies: Affinity purified rabbit anti-DDX18 antibody BL3018 used for WB at 0.04 ug/ml (A) and 1 ug/ml (B) and for IP at 3 ug/mg lysate. DDX18 was also immunoprecipitated using rabbit anti-DDX18 antibody BL3015 at 3 ug/mg lysate. Detection: Chemiluminescence with exposure times of 3 minutes (A) and 30 seconds (B).

Requested From:

Japan

Laboratory Reagent For In Vitro Research Use Only

Not for resale without prior written consent from LifeSpan BioSciences, Inc.

Created on 9/30/2014

© 2014 LifeSpan BioSciences