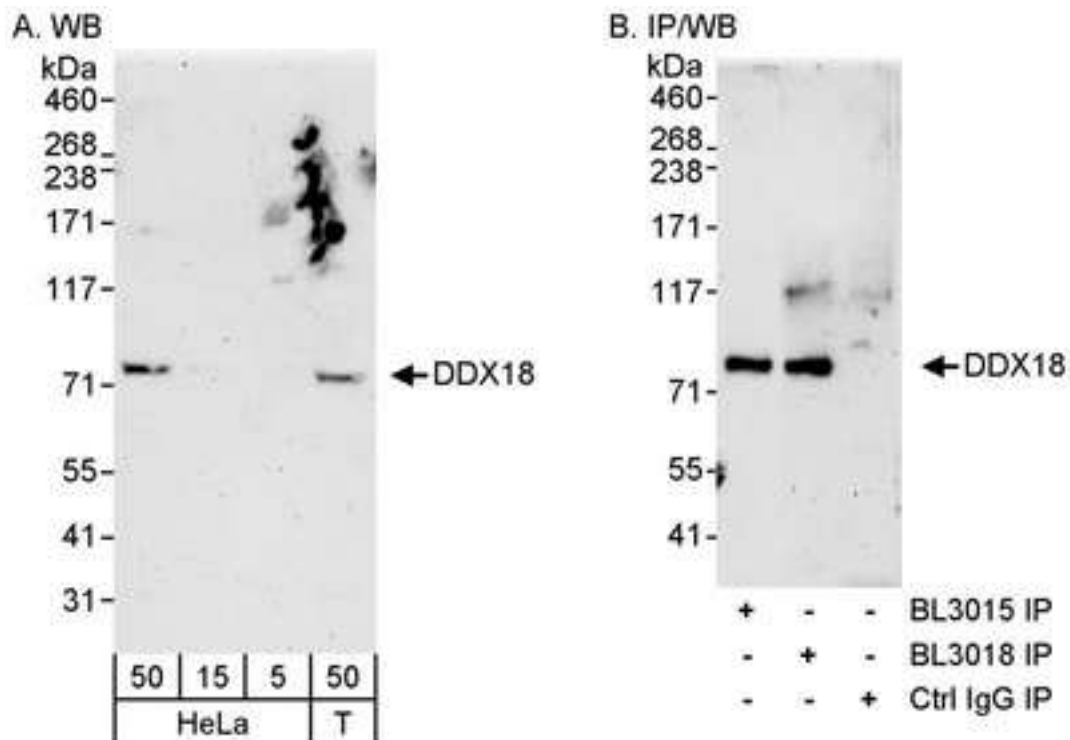


**DDX18 Rabbit anti-Human Polyclonal (aa1-50) Antibody - LS-C287505 - LSBio**

<b>CatalogID:</b>	LS-C287505
<b>Target:</b>	DEAD (Asp-Glu-Ala-Asp) box polypeptide 18 (DDX18)
<b>Synonyms:</b>	DDX18 Antibody, DEAD box protein 18 Antibody, Myc-regulated DEAD box protein Antibody, MrDb Antibody
<b>Family / Subfamily:</b>	DEAD box protein
<b>Host</b>	DDX18 antibody was produced in Rabbit
<b>Clonality:</b>	Polyclonal
<b>Isotype:</b>	IgG
<b>Immunogen Species:</b>	DDX18 antibody was raised against Human
<b>Specificity:</b>	Region between residues 1 and 50 of human DEAD (Asp-Glu-Ala-Asp) Box Protein 18 using the numbering given in entry NP_006764.3 (GeneID 8886).
<b>Epitope:</b>	aa1-50
<b>Reactivity:</b>	Human, Orangutan, Bovine, Dog, Pig, Rabbit
<b>Purification:</b>	Immunoaffinity purified
<b>Presentation:</b>	Tris-buffered saline, 0.1% BSA, 0.09% sodium azide.
<b>Recommended Storage:</b>	Store at 2-8°C for up to 1 year.
<b>Uses:</b>	Western blot (1:2000 - 1:10000), Immunoprecipitation (1 - 4 µg/mg lysate) (Optimal dilution to be determined by the researcher)
<b>Size:</b>	100 µl
<b>Manufacturer:</b>	Bethyl Laboratories, Inc.

**Western Blot Image:**



Detection of Human DDX18 by Western Blot and Immunoprecipitation. Samples: Whole cell lysate from HeLa (5, 15 and 50 ug for WB; 1 mg for IP, 20% of IP loaded) and 293T (T; 50 ug for WB) cells. Antibodies: Affinity purified rabbit anti-DDX18 antibody BL3015 used for WB at 0.04 ug/ml (A) and 1 ug/ml (B) and for IP at 3 ug/mg lysate. DDX18 was also immunoprecipitated using rabbit anti-DDX18 antibody BL3018 at 3 ug/mg lysate. Detection: Chemiluminescence with exposure times of 3 minutes (A and B).

**Requested From:**

Japan

Laboratory Reagent For In Vitro Research Use Only

Not for resale without prior written consent from LifeSpan BioSciences, Inc.

Created on 9/30/2014

© 2014 LifeSpan BioSciences