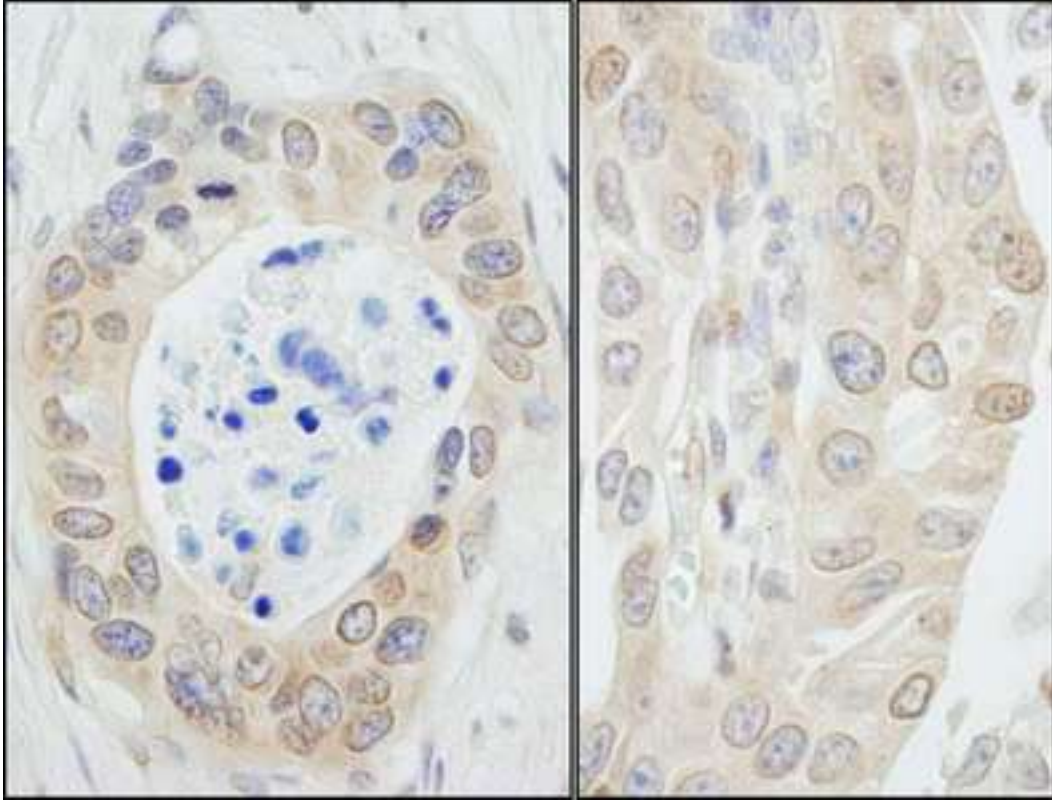


**NMI Rabbit anti-Human Polyclonal (C-Terminus) Antibody - LS-C287433 - LSBio**

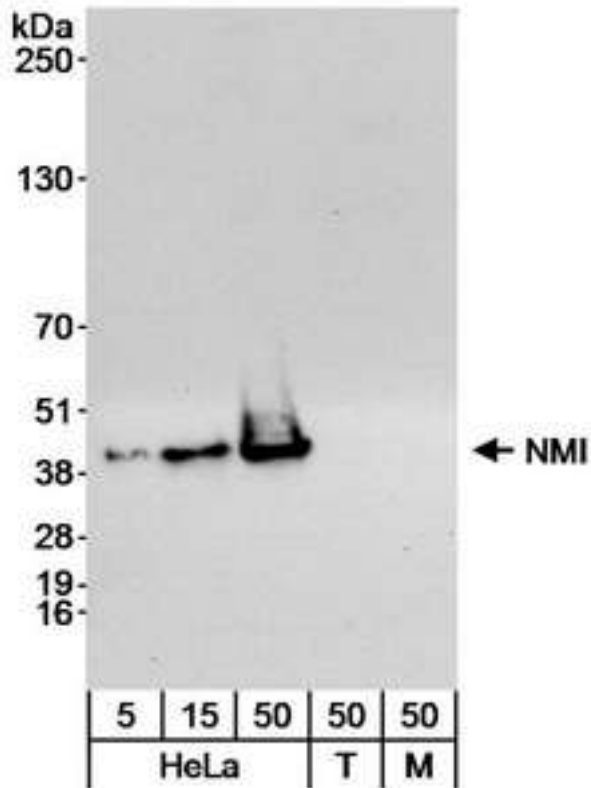
<b>CatalogID:</b>	LS-C287433
<b>Target:</b>	N-myc (and STAT) interactor (NMI)
<b>Synonyms:</b>	NMI Antibody, Hou Antibody, N-myc and STAT interactor Antibody, N-myc-interactor Antibody, N-myc (and STAT) interactor Antibody, N-myc interactor Antibody
<b>Host</b>	NMI antibody was produced in Rabbit
<b>Clonality:</b>	Polyclonal
<b>Isotype:</b>	IgG
<b>Immunogen Species:</b>	NMI antibody was raised against Human
<b>Specificity:</b>	Region between residue 250 and the C-terminus (residue 307) of human N-myc and STAT interactor using the numbering given in entry NP_004679.1 (GeneID 9111).
<b>Epitope:</b>	C-Terminus
<b>Reactivity:</b>	Human, Chimpanzee, Orangutan
<b>Purification:</b>	Immunoaffinity purified
<b>Presentation:</b>	Tris-buffered saline, 0.1% BSA, 0.09% sodium azide.
<b>Recommended Storage:</b>	Store at 2-8°C for up to 1 year.
<b>Usage Summary:</b>	Immunohistochemistry: Antigen retrieval with citrate buffer pH 6.0 is recommended for FFPE tissue sections. Human controls: ADDITIONAL INFO <a href="http://www.bethyl.com/product/A300-551A">http://www.bethyl.com/product/A300-551A</a> .
<b>Uses:</b>	IHC - Paraffin (1:500 - 1:2000), Immunofluorescence (1:250 - 1:1000), Western blot (1:2000 - 1:10000) (Optimal dilution to be determined by the researcher)
<b>Uses Not Recommended:</b>	Immunoprecipitation
<b>Size:</b>	100 µl
<b>Manufacturer:</b>	Bethyl Laboratories, Inc.

**Immunohistochemistry Image:**



Detection of Human NMI by Immunohistochemistry. Sample: FFPE section of human ovarian carcinoma (left) and bladder carcinoma (right). Antibody: Affinity purified rabbit anti-NMI used at a dilution of 1:1000 (0.2 ug/ml). Detection: DAB.

**Western Blot Image:**



Detection of Human NMI by Western Blot. Samples: Whole cell lysate from HeLa (5, 15 and 50 ug), 293T (T; 50 ug) and NIH3T3 (M; 50 ug) cells. Antibody: Affinity purified rabbit anti-NMI antibody used at 0.04 ug/ml for WB. Detection: Chemiluminescence with an exposure time of 30 seconds.

**Requested From:**

Japan

Laboratory Reagent For In Vitro Research Use Only

Not for resale without prior written consent from LifeSpan BioSciences, Inc.

Created on 9/30/2014

© 2014 LifeSpan BioSciences