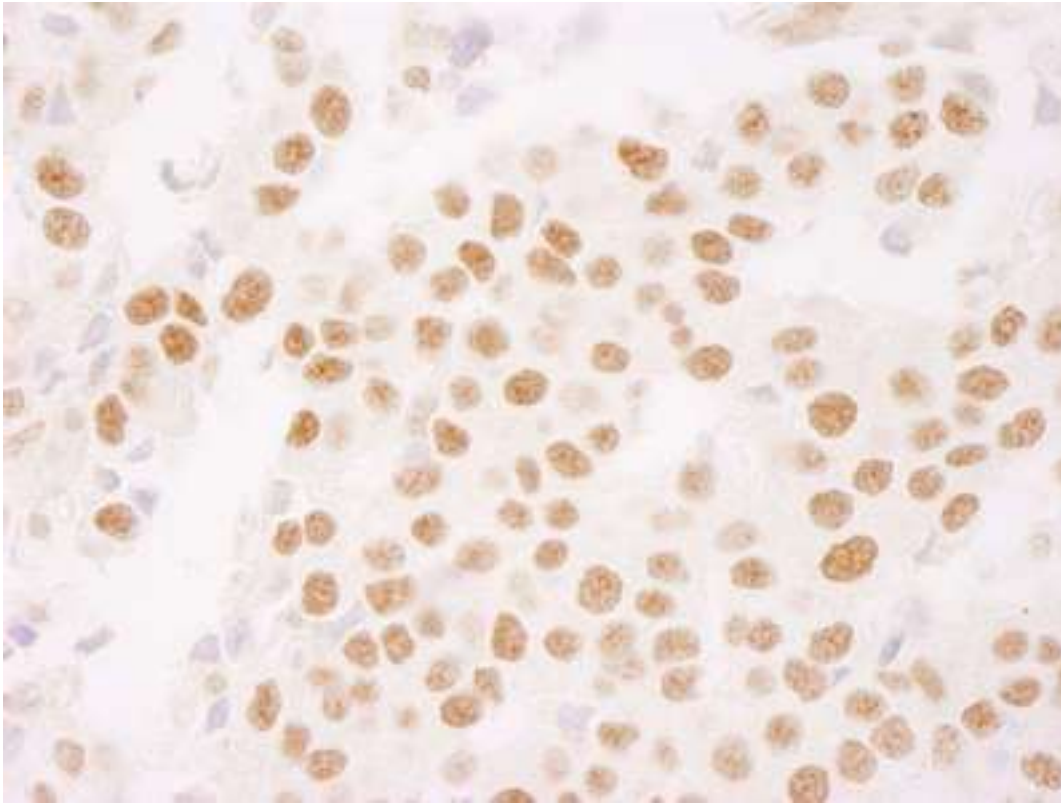


MKI67 / Ki67 Rabbit anti-Human Polyclonal (aa1800-1850) Antibody - LS-C286633 - LSBio	
<b>CatalogID:</b>	LS-C286633
<b>Target:</b>	marker of proliferation Ki-67 (MKI67)
<b>Synonyms:</b>	MKI67 Antibody, Antigen KI-67 Antibody, Ki67 Antibody, KIA Antibody
<b>Host</b>	MKI67 antibody was produced in Rabbit
<b>Clonality:</b>	Polyclonal
<b>Isotype:</b>	IgG
<b>Immunogen Species:</b>	MKI67 / Ki67 antibody was raised against Human
<b>Specificity:</b>	Region between residues 1800 and 1850 of human Ki67 using the numbering given in entry NP_002408.2 (GeneID 4288).
<b>Epitope:</b>	aa1800-1850
<b>Reactivity:</b>	Human
<b>Purification:</b>	Immunoaffinity purified
<b>Presentation:</b>	Tris-buffered saline, 0.1% BSA, 0.09% sodium azide.
<b>Recommended Storage:</b>	Store at 2-8°C for up to 1 year.
<b>Usage Summary:</b>	Immunohistochemistry: Antigen retrieval is recommended. Antigen retrieval with Tris-EDTA pH 9.0 buffer will enhance staining. Likely to work with frozen sections. In some cases, the antibody may be diluted further than indicated. Human controls: Breast Carcinoma, Colon Carcinoma, Linitis Plastica Stomach Cancer, Ovarian Carcinoma, Pancreatic Islet Cell Tumor, Prostate Carcinoma, Skin Squamous Cell Carcinoma, Stomach Adenocarcinoma, Testicular Seminoma.
<b>Uses:</b>	IHC, Immunofluorescence (1:50 - 1:500), Proximity Ligation Assay (1:250 - 1:5000) (Optimal dilution to be determined by the researcher)
<b>Size:</b>	100 µl
<b>Manufacturer:</b>	Bethyl Laboratories, Inc.

**Immunohistochemistry Image:**



Detection of Human Ki-67 by Immunohistochemistry. Sample: FFPE section of human breast carcinoma. Antibody: Affinity purified rabbit anti-Ki-67 used at a dilution of 1:250. Epitope Retrieval Buffer-High pH (IHC-101J) was substituted for Epitope Retrieval Buffer-Reduced pH.

**Requested From:**

Japan

Laboratory Reagent For In Vitro Research Use Only

Not for resale without prior written consent from LifeSpan BioSciences, Inc.

Created on 9/30/2014

© 2014 LifeSpan BioSciences