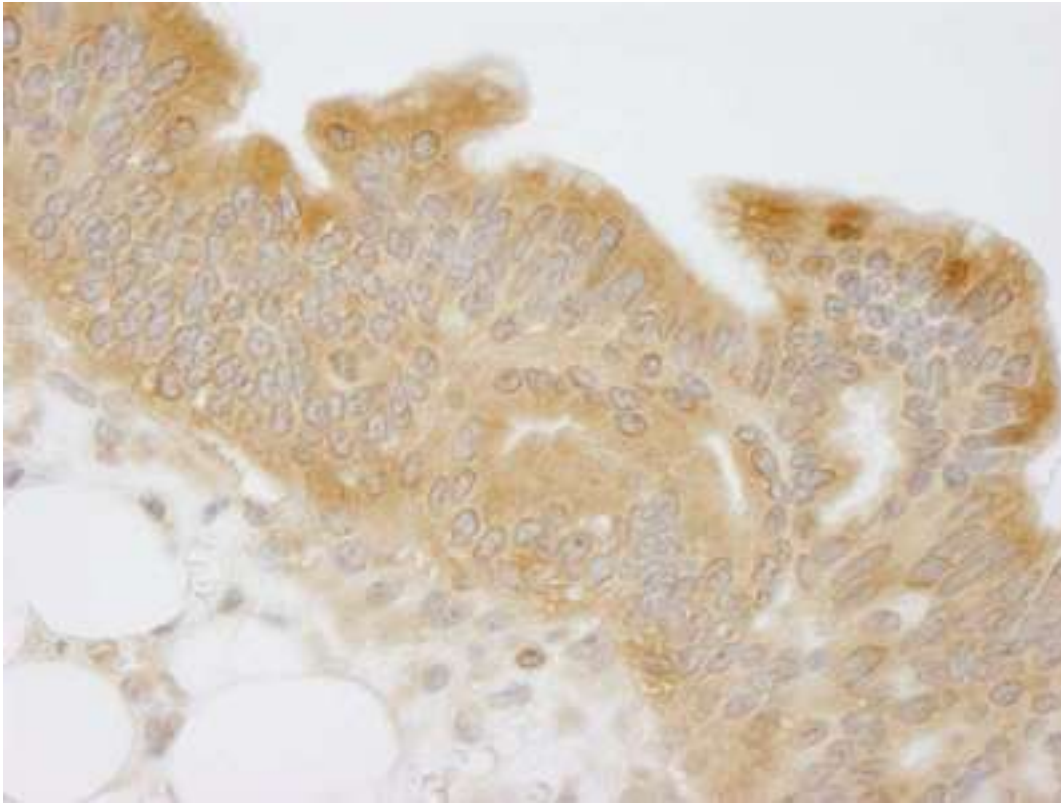


**NMI Rabbit anti-Human Polyclonal (C-Terminus) Antibody - LS-C286445 - LSBio**

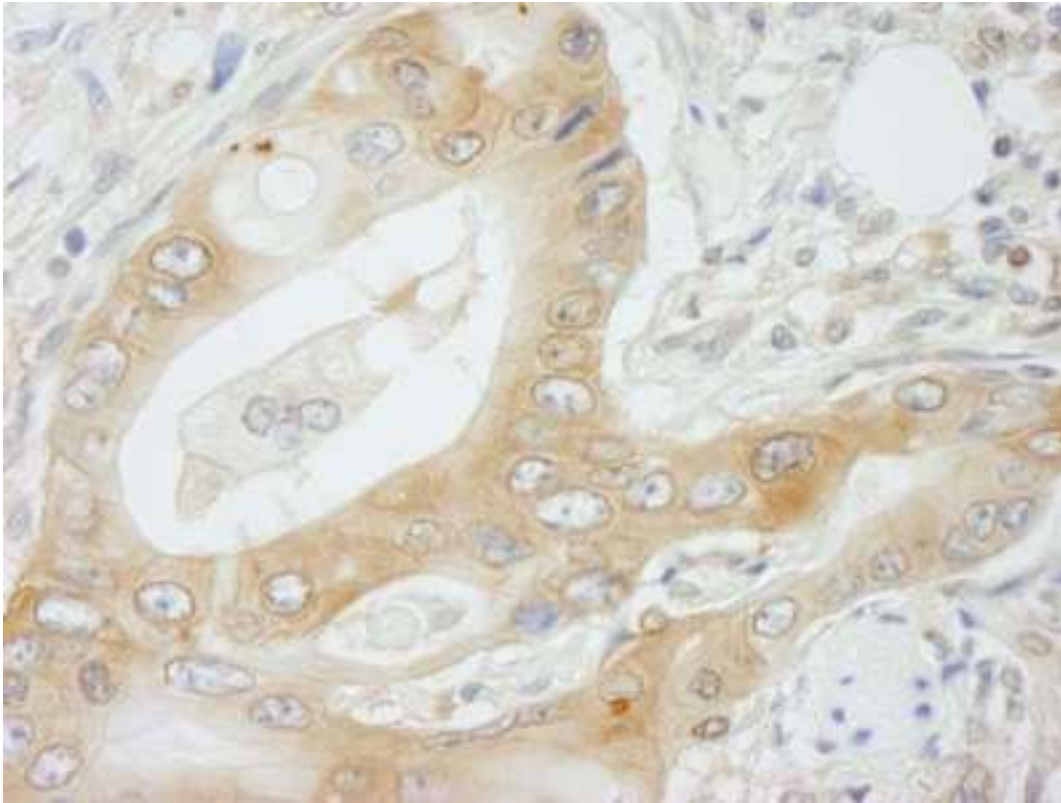
<b>CatalogID:</b>	LS-C286445
<b>Target:</b>	N-myc (and STAT) interactor (NMI)
<b>Synonyms:</b>	NMI Antibody, Hou Antibody, N-myc and STAT interactor Antibody, N-myc-interactor Antibody, N-myc (and STAT) interactor Antibody, N-myc interactor Antibody
<b>Host</b>	NMI antibody was produced in Rabbit
<b>Clonality:</b>	Polyclonal
<b>Isotype:</b>	IgG
<b>Immunogen Species:</b>	NMI antibody was raised against Human
<b>Specificity:</b>	Region between residues 250 and the C-terminus (residue 307) of human N-myc and STAT interactor using the numbering given in entry NP_004679.1 (GeneID 9111).
<b>Epitope:</b>	C-Terminus
<b>Reactivity:</b>	Human, Chimpanzee, Orangutan
<b>Purification:</b>	Immunoaffinity purified
<b>Presentation:</b>	Tris-buffered saline, 0.1% BSA, 0.09% sodium azide.
<b>Recommended Storage:</b>	Store at 2-8°C for up to 1 year.
<b>Usage Summary:</b>	Immunohistochemistry: Antigen retrieval is recommended. Antigen retrieval with citrate buffer will enhance staining. Likely to work with frozen sections. In some cases, the antibody may be diluted further than indicated. Human controls: Bladder Cell Carcinoma, Breast Carcinoma, Ovarian Carcinoma.
<b>Uses:</b>	IHC - Paraffin (1:100 - 1:500), Immunofluorescence (1:50 - 1:500) (Optimal dilution to be determined by the researcher)
<b>Size:</b>	100 µl
<b>Manufacturer:</b>	Bethyl Laboratories, Inc.

**Immunohistochemistry Image:**



Detection of Human NMI by Immunohistochemistry. Sample: FFPE section of human mucinous ovarian carcinoma. Antibody: Affinity purified rabbit anti-NMI used at a dilution of 1:250.

**Immunohistochemistry Image:**



Detection of Human NMI by Immunohistochemistry. Sample: FFPE section of human colon adenocarcinoma. Antibody: Affinity purified rabbit anti-NMI used at a dilution of 1:250.

**Requested From:**

Japan

Laboratory Reagent For In Vitro Research Use Only

Not for resale without prior written consent from LifeSpan BioSciences, Inc.

Created on 9/30/2014

© 2014 LifeSpan BioSciences