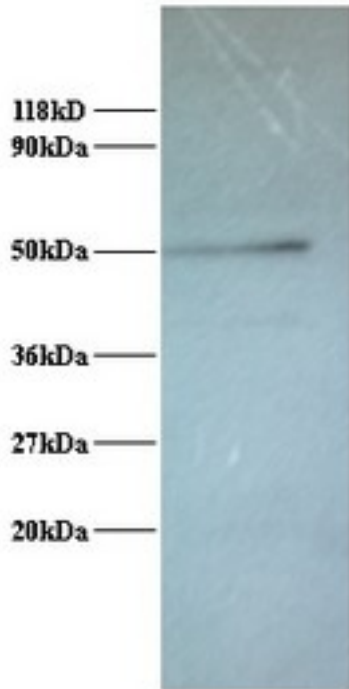


**ATP6V1G1 / ATP6J Rabbit anti-Human Polyclonal (FITC) Antibody - LS-C212154 - LSBio**

<b>CatalogID:</b>	LS-C212154
<b>Target:</b>	ATPase, H <sup>+</sup> transporting, lysosomal 13kDa, V1 subunit G1 (ATP6V1G1)
<b>Synonyms:</b>	ATP6V1G1 Antibody, ATP6GL Antibody, ATP6J Antibody, Atp1v1g1 Antibody, ATP6G Antibody, ATP6G1 Antibody, V-ATPase 13 kDa subunit 1 Antibody, V-ATPase G subunit 1 Antibody, Vma10 Antibody, V-ATPase subunit G 1 Antibody
<b>Family / Subfamily:</b>	Transporter / ATPase - V type
<b>Host</b>	ATP6V1G1 antibody was produced in Rabbit
<b>Clonality:</b>	Polyclonal
<b>Isotype:</b>	IgG
<b>Conjugations:</b>	Fluorescein (FITC)
<b>Immunogen Species:</b>	ATP6V1G1 / ATP6J antibody was raised against Human
<b>Antigen Type:</b>	Recombinant protein
<b>Immunogen:</b>	ATP6V1G1 / ATP6J antibody was raised against recombinant human V-type proton ATPase subunit G 1 protein.
<b>Specificity:</b>	Human ATP6V1G1 / ATP6J
<b>Reactivity:</b>	Human, Mouse, Rat
<b>Purification:</b>	Caprylic acid and ammonium sulfate precipitation
<b>Presentation:</b>	PBS, pH 7.4, 0.03% Proclin 300, 50% glycerol.
<b>Recommended Storage:</b>	Aliquot and store at -20°C or -80°C. Avoid freeze-thaw cycles.
<b>Uses:</b>	IHC, Western blot, ELISA (Optimal dilution to be determined by the researcher)
<b>Size:</b>	100 µg

**Western Blot Image:**



Western blot of V-type proton ATPase subunit G 1 Antibody at 2 ug/ml + 293T whole cell lysate at 20 ug. Secondary: Goat polyclonal to Rabbit IgG at 1:15000 dilution. Predicted band size: 13 kDa. Observed band size: 50 kDa.

**Requested From:**

Japan

Laboratory Reagent For In Vitro Research Use Only

Not for resale without prior written consent from LifeSpan BioSciences, Inc.

Created on 9/27/2014

© 2014 LifeSpan BioSciences