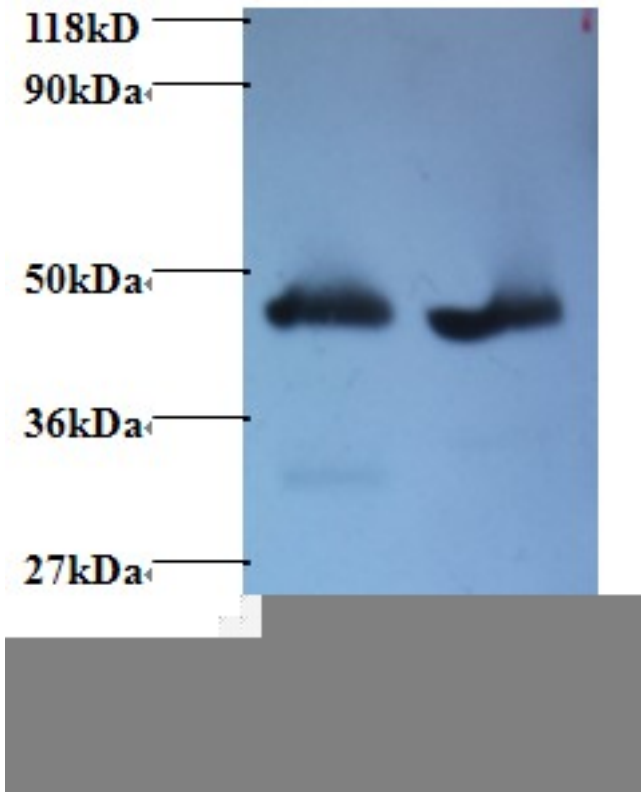


GOT2 Rabbit anti-Human Polyclonal (FITC) Antibody - LS-C212150 - LSBio

CatalogID:	LS-C212150
Target:	glutamic-oxaloacetic transaminase 2, mitochondrial (GOT2)
Synonyms:	GOT2 Antibody, FABP-1 Antibody, MitAAT Antibody, Transaminase A Antibody, FABPpm Antibody, Fatty acid-binding protein Antibody, KAT4 Antibody, KATIV Antibody, Kynurenine aminotransferase IV Antibody, MAspAT Antibody
Host	GOT2 antibody was produced in Rabbit
Clonality:	Polyclonal
Isotype:	IgG
Conjugations:	Fluorescein (FITC)
Immunogen Species:	GOT2 antibody was raised against Human
Reactivity:	Human, Mouse, Rat
Purification:	Caprylic acid and ammonium sulfate precipitation
Presentation:	PBS, pH 7.4, 0.03% Proclin 300, 50% glycerol.
Recommended Storage:	Aliquot and store at -20°C or -80°C. Avoid freeze-thaw cycles.
Uses:	IHC, Western blot, ELISA (Optimal dilution to be determined by the researcher)
Size:	100 µg

Western Blot Image:



Western blot of Aspartate aminotransferase, mitochondrial antibody at 2 ug/ml. Lane 1: EC109 whole cell lysate. Lane 2: 293T whole cell lysate. Secondary: Goat polyclonal to Rabbit IgG at 1:15000 dilution. Predicted band size: 47 kDa. Observed band size: 47 kDa.

Requested From:

Japan

Laboratory Reagent For In Vitro Research Use Only

Not for resale without prior written consent from LifeSpan BioSciences, Inc.

Created on 9/27/2014

© 2014 LifeSpan BioSciences