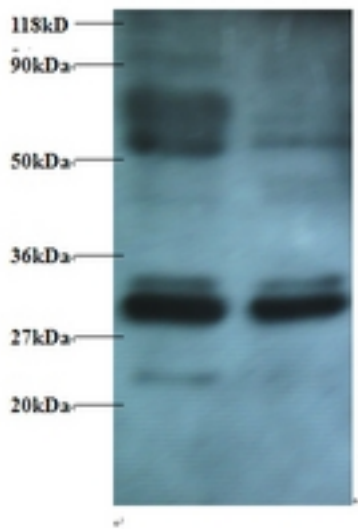


ERP29 Rabbit anti-Human Polyclonal (FITC) Antibody - LS-C212146 - LSBio	
<b>CatalogID:</b>	LS-C212146
<b>Target:</b>	endoplasmic reticulum protein 29 (ERP29)
<b>Synonyms:</b>	ERP29 Antibody, C12orf8 Antibody, ERp28 Antibody, ERp31 Antibody, PDI-DB Antibody, PDIA9 Antibody
<b>Host</b>	ERP29 antibody was produced in Rabbit
<b>Clonality:</b>	Polyclonal
<b>Isotype:</b>	IgG
<b>Conjugations:</b>	Fluorescein (FITC)
<b>Immunogen Species:</b>	ERP29 antibody was raised against Human
<b>Antigen Type:</b>	Recombinant protein
<b>Immunogen:</b>	ERP29 antibody was raised against recombinant human Endoplasmic reticulum resident protein 29 protein.
<b>Specificity:</b>	Human ERP29
<b>Reactivity:</b>	Human, Mouse, Rat, Bovine, Dog, Guinea pig, Hamster
<b>Purification:</b>	Caprylic acid and ammonium sulfate precipitation
<b>Presentation:</b>	PBS, pH 7.4, 0.03% Proclin 300, 50% glycerol.
<b>Recommended Storage:</b>	Aliquot and store at -20°C or -80°C. Avoid freeze-thaw cycles.
<b>Uses:</b>	IHC, Western blot, ELISA (Optimal dilution to be determined by the researcher)
<b>Size:</b>	100 µg

**Western Blot Image:**



Western blot of Endoplasmic reticulum resident protein 29 antibody at 2 ug/ml. Lane 1: EC109 whole cell lysate. Lane 2: 293T whole cell lysate. Secondary: Goat polyclonal to Rabbit IgG at 1:15000 dilution. Predicted band size: 29 kDa. Observed band size: 29 kDa. Additional bands at: 33 kDa, 55 kDa; We are unsure as to the identity of these extra bands.

**Requested From:**

Japan

Laboratory Reagent For In Vitro Research Use Only

Not for resale without prior written consent from LifeSpan BioSciences, Inc.

Created on 9/27/2014

© 2014 LifeSpan BioSciences