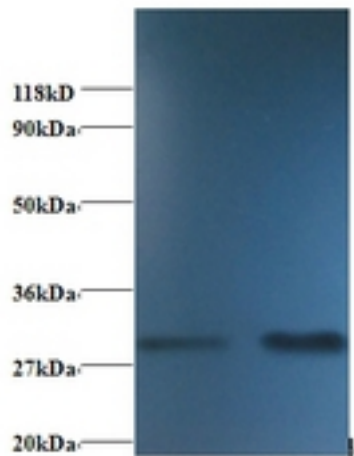


**SOD1 / SOD Rabbit anti-Human Polyclonal (FITC) Antibody - LS-C212144 - LSBio**

<b>CatalogID:</b>	LS-C212144
<b>Target:</b>	superoxide dismutase 1, soluble (SOD1)
<b>Synonyms:</b>	SOD1 Antibody, ALS Antibody, ALS1 Antibody, Cu/Zn superoxide dismutase Antibody, HSod1 Antibody, Homodimer Antibody, IPOA Antibody, SOD, soluble Antibody, SOD Antibody, Superoxide dismutase [Cu-Zn] Antibody, Superoxide dismutase 1 Antibody, Indophenoloxidase A Antibody, Superoxide dismutase, cystolic Antibody
<b>Host</b>	SOD1 antibody was produced in Rabbit
<b>Clonality:</b>	Polyclonal
<b>Isotype:</b>	IgG
<b>Conjugations:</b>	Fluorescein (FITC)
<b>Immunogen Species:</b>	SOD1 / SOD antibody was raised against Human
<b>Antigen Type:</b>	Recombinant protein
<b>Immunogen:</b>	SOD1 / SOD antibody was raised against recombinant human Superoxide dismutase [Cu-Zn] protein.
<b>Specificity:</b>	Human SOD1 / SOD
<b>Reactivity:</b>	Human, Monkey, Mouse, Rat, Bovine, Dog, Hamster, Pig, Rabbit, Sheep, Xenopus
<b>Purification:</b>	Caprylic acid and ammonium sulfate precipitation
<b>Presentation:</b>	PBS, pH 7.4, 0.03% Proclin 300, 50% glycerol.
<b>Recommended Storage:</b>	Aliquot and store at -20°C or -80°C. Avoid freeze-thaw cycles.
<b>Uses:</b>	IHC, Western blot, ELISA (Optimal dilution to be determined by the researcher)
<b>Size:</b>	100 µg

**Western Blot Image:**



Western blot of Superoxide dismutase [Cu-Zn] antibody at 2 ug/ml. Lane 1: EC109 whole cell lysate. Lane 2: 293T whole cell lysate. Secondary: Goat polyclonal to Rabbit IgG at 1:15000 dilution. Predicted band size: 17 kDa. Observed band size: 32 kDa.

**Requested From:**

Japan

Laboratory Reagent For In Vitro Research Use Only

Not for resale without prior written consent from LifeSpan BioSciences, Inc.

Created on 9/27/2014

© 2014 LifeSpan BioSciences