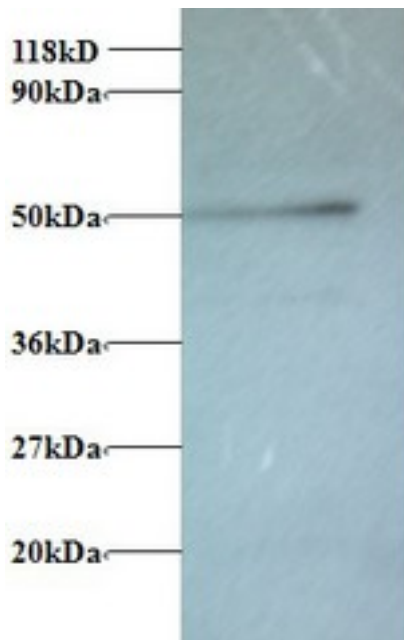


ATP6V1G1 / ATP6J Rabbit anti-Human Polyclonal (FITC) Antibody - LS-C212141 - LSBio	
CatalogID:	LS-C212141
Target:	ATPase, H ⁺ transporting, lysosomal 13kDa, V1 subunit G1 (ATP6V1G1)
Synonyms:	ATP6V1G1 Antibody, ATP6GL Antibody, ATP6J Antibody, Atp1v1g1 Antibody, ATP6G Antibody, ATP6G1 Antibody, V-ATPase 13 kDa subunit 1 Antibody, V-ATPase G subunit 1 Antibody, Vma10 Antibody, V-ATPase subunit G 1 Antibody
Family / Subfamily:	Transporter / ATPase - V type
Host	ATP6V1G1 antibody was produced in Rabbit
Clonality:	Polyclonal
Isotype:	IgG
Conjugations:	Fluorescein (FITC)
Immunogen Species:	ATP6V1G1 / ATP6J antibody was raised against Human
Antigen Type:	Recombinant protein
Immunogen:	ATP6V1G1 / ATP6J antibody was raised against recombinant human V-type proton ATPase subunit G 1 protein.
Specificity:	Human ATP6V1G1 / ATP6J
Reactivity:	Human, Mouse, Rat, Bovine
Purification:	Caprylic acid and ammonium sulfate precipitation
Presentation:	PBS, pH 7.4, 0.03% Proclin 300, 50% glycerol.
Recommended Storage:	Aliquot and store at -20°C or -80°C. Avoid freeze-thaw cycles.
Uses:	IHC, Western blot, ELISA (Optimal dilution to be determined by the researcher)
Size:	100 µg

Western Blot Image:



Western blot of V-type proton ATPase subunit G 1 antibody at 2 ug/ml + 293T whole cell lysate at 20 ug. Secondary: Goat polyclonal to Rabbit IgG at 1:15000 dilution. Predicted band size: 13 kDa. Observed band size: 50 kDa.

Requested From:

Japan

Laboratory Reagent For In Vitro Research Use Only

Not for resale without prior written consent from LifeSpan BioSciences, Inc.

Created on 9/27/2014

© 2014 LifeSpan BioSciences