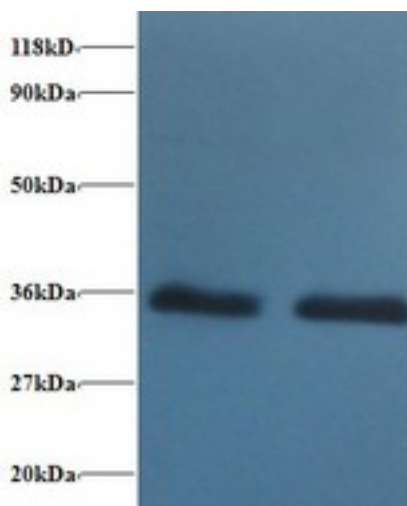


14-3-3 Alpha + Beta Rabbit anti-Human Polyclonal (FITC) Antibody - LS-C212111 - LSBio

CatalogID:	LS-C212111
Target:	14-3-3 Alpha/Beta
Host	Rabbit
Clonality:	Polyclonal
Isotype:	IgG
Conjugations:	Fluorescein (FITC)
Immunogen Species:	Human
Antigen Type:	Recombinant protein
Immunogen:	Recombinant human 14-3-3 protein beta/alpha protein.
Specificity:	Human 14-3-3 Alpha + Beta
Reactivity:	Human, Mouse, Rat
Purification:	Caprylic acid and ammonium sulfate precipitation
Presentation:	PBS, pH 7.4, 0.03% Proclin 300, 50% glycerol.
Recommended Storage:	Aliquot and store at -20°C or -80°C. Avoid freeze-thaw cycles.
Uses:	IHC, Western blot, ELISA (Optimal dilution to be determined by the researcher)
Size:	100 µg

Western Blot Image:



Western blot of 14-3-3 protein beta/alpha antibody at 2 ug/ml. Lane 1:293T whole cell lysate. Lane 2: EC109 whole cell lysate. Secondary: Goat polyclonal to Rabbit IgG at 1:15000 dilution. Predicted band size: 27 kDa. Observed band size: 36 kDa.

Requested From: Japan

Laboratory Reagent For In Vitro Research Use Only

Not for resale without prior written consent from LifeSpan BioSciences, Inc.

Created on 9/27/2014

© 2014 LifeSpan BioSciences