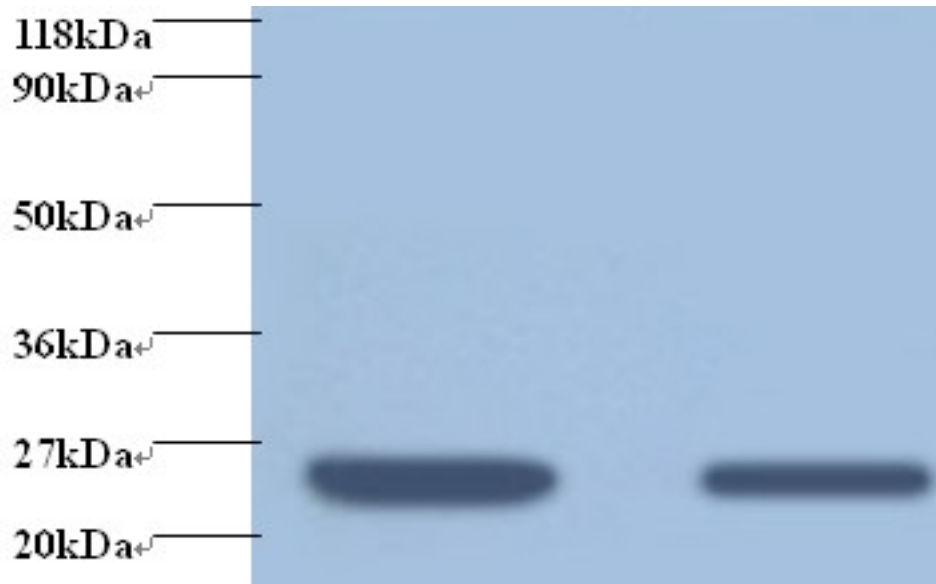


RBP / RBP4 Rabbit anti-Human Polyclonal (FITC) Antibody - LS-C211909 - LSBio

CatalogID:	LS-C211909
Target:	retinol binding protein 4, plasma (RBP4)
Synonyms:	RBP4 Antibody, PRBP Antibody, Plasma retinol-binding protein Antibody, RBP Antibody, Retinol-binding protein 4 Antibody
Host	RBP4 antibody was produced in Rabbit
Clonality:	Polyclonal
Isotype:	IgG
Conjugations:	Fluorescein (FITC)
Immunogen Species:	RBP / RBP4 antibody was raised against Human
Antigen Type:	Recombinant protein
Immunogen:	RBP / RBP4 antibody was raised against recombinant human Retinol-binding protein 4 protein.
Specificity:	Human RBP / RBP4
Reactivity:	Human
Purification:	Caprylic acid and ammonium sulfate precipitation
Presentation:	PBS, pH 7.4, 0.03% Proclin 300, 50% glycerol.
Recommended Storage:	Aliquot and store at -20°C or -80°C. Avoid freeze-thaw cycles.
Uses:	IHC, Western blot, ELISA (Optimal dilution to be determined by the researcher)
Size:	100 µg

Western Blot Image:



Western blot of human Retinol-binding protein 4 antibody at 2 ug/ml + human positive serum. Lane 1: positive serum at 1:10. Lane 2: positive serum at 1:100. Secondary: Goat polyclonal to Rabbit IgG at 1:5000 dilution. Predicted band size:22 kDa. Observed band size: 22 kDa-23 kDa.

Requested From:

Japan

Laboratory Reagent For In Vitro Research Use Only

Not for resale without prior written consent from LifeSpan BioSciences, Inc.

Created on 9/27/2014

© 2014 LifeSpan BioSciences