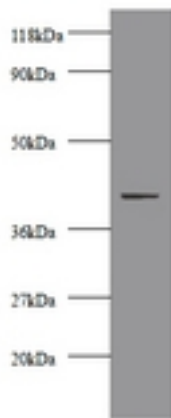


CKM / Creatine Kinase MM Rabbit anti-Human Polyclonal (FITC) Antibody - LS-C211428 - LSBio	
CatalogID:	LS-C211428
Target:	creatine kinase, muscle (CKM)
Synonyms:	CKM Antibody, CK-MB Antibody, CKMM Antibody, Creatine kinase M-type Antibody, Creatine kinase, muscle Antibody, M-CK Antibody, Creatine kinase M chain Antibody
Host	CKM antibody was produced in Rabbit
Clonality:	Polyclonal
Isotype:	IgG
Conjugations:	Fluorescein (FITC)
Immunogen Species:	CKM / Creatine Kinase MM antibody was raised against Human
Antigen Type:	Recombinant protein
Immunogen:	CKM / Creatine Kinase MM antibody was raised against recombinant human Creatine kinase M-type protein.
Specificity:	Human CKM / Creatine Kinase MM
Reactivity:	Human
Purification:	Caprylic acid and ammonium sulfate precipitation
Presentation:	PBS, pH 7.4, 0.03% Proclin 300, 50% glycerol.
Recommended Storage:	Aliquot and store at -20°C or -80°C. Avoid freeze-thaw cycles.
Uses:	IHC, Western blot, ELISA (Optimal dilution to be determined by the researcher)
Size:	100 µg

Western Blot Image:



Western blot of Creatine kinase M-type antibody at 2ug/ml + 293T whole cell lysate.
Secondary: Goat polyclonal to Rabbit IgG at 1:10000 dilution. Predicted band size: 42 kDa.
Observed band size: 42 kDa.

Requested From:

Japan

Laboratory Reagent For In Vitro Research Use Only

Not for resale without prior written consent from LifeSpan BioSciences, Inc.

Created on 9/27/2014

© 2014 LifeSpan BioSciences