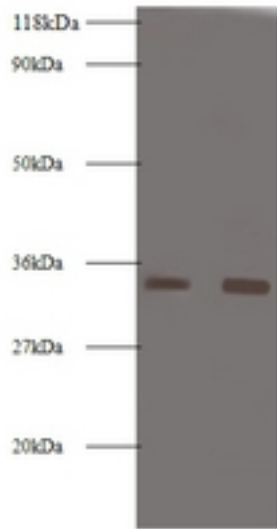


PRSS3 / Trypsin 3 Rabbit anti-Human Polyclonal (FITC) Antibody - LS-C211422 - LSBio

CatalogID:	LS-C211422
Target:	protease, serine, 3 (PRSS3)
Synonyms:	PRSS3 Antibody, Brain trypsinogen Antibody, Mesotrypsin Antibody, PRSS4 Antibody, Serine protease 4 Antibody, Serine protease 3 Antibody, TRY4 Antibody, Trypsin III Antibody, Trypsin IV Antibody, Trypsinogen 4 Antibody, MTG Antibody, Trypsinogen 5 Antibody, Pancreatic trypsinogen III Antibody, Protease, serine, 3 Antibody, Trypsin-3 Antibody, Mesotrypsinogen Antibody, T9 Antibody, TRY3 Antibody, Trypsinogen IV Antibody
Family / Subfamily:	Protease / Serine S1
Host	PRSS3 antibody was produced in Rabbit
Clonality:	Polyclonal
Isotype:	IgG
Conjugations:	Fluorescein (FITC)
Immunogen Species:	PRSS3 / Trypsin 3 antibody was raised against Human
Reactivity:	Human
Purification:	Caprylic acid and ammonium sulfate precipitation
Presentation:	PBS, pH 7.4, 0.03% Proclin 300, 50% glycerol.
Recommended Storage:	Aliquot and store at -20°C or -80°C. Avoid freeze-thaw cycles.
Uses:	IHC, Western blot, ELISA (Optimal dilution to be determined by the researcher)
Size:	100 µg

Western Blot Image:



Western blot of Trypsin-3 antibody at 2 ug/ml. Lane 1: EC109 whole cell lysate. Lane 2: 293T whole cell lysate. Secondary: Goat polyclonal to rabbit IgG at 1:10000 dilution. Predicted band size: 33 kDa. Observed band size: 33 kDa.

Requested From:

Japan

Laboratory Reagent For In Vitro Research Use Only

Not for resale without prior written consent from LifeSpan BioSciences, Inc.

Created on 9/27/2014

© 2014 LifeSpan BioSciences