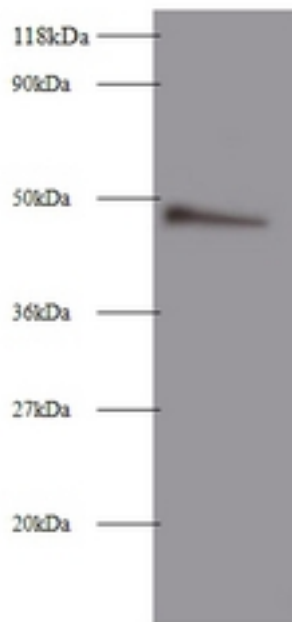


CLU / Clusterin Rabbit anti-Human Polyclonal (FITC) Antibody - LS-C211419 - LSBio

<b>CatalogID:</b>	LS-C211419
<b>Target:</b>	clusterin
<b>Synonyms:</b>	CLU Antibody, APO-J Antibody, Apolipoprotein J Antibody, CLU1 Antibody, Clusterin Antibody, Complement lysis inhibitor Antibody, CLI Antibody, AAG4 Antibody, Aging-associated protein 4 Antibody, Ku70-binding protein 1 Antibody, KUB1 Antibody, SGP2 Antibody, APOJ Antibody, SGP-2 Antibody, Sulfated glycoprotein 2 Antibody, CLU2 Antibody, Complement cytolysis inhibitor Antibody, NA1/NA2 Antibody, SP-40 Antibody
<b>Host</b>	CLU antibody was produced in Rabbit
<b>Clonality:</b>	Polyclonal
<b>Isotype:</b>	IgG
<b>Conjugations:</b>	Fluorescein (FITC)
<b>Immunogen Species:</b>	CLU / Clusterin antibody was raised against Human
<b>Antigen Type:</b>	Recombinant protein
<b>Immunogen:</b>	CLU / Clusterin antibody was raised against recombinant human Clusterin protein.
<b>Specificity:</b>	Human CLU / Clusterin
<b>Reactivity:</b>	Human
<b>Purification:</b>	Caprylic acid and ammonium sulfate precipitation
<b>Presentation:</b>	PBS, pH 7.4, 0.03% Proclin 300, 50% glycerol.
<b>Recommended Storage:</b>	Aliquot and store at -20°C or -80°C. Avoid freeze-thaw cycles.
<b>Uses:</b>	IHC, Western blot, ELISA (Optimal dilution to be determined by the researcher)
<b>Size:</b>	100 µg

**Western Blot Image:**



Western blot of Clusterin antibody at 2ug/ml + 293T whole cell lysate. Secondary: Goat polyclonal to Rabbit IgG at 1:10000 dilution. Predicted band size: 49 kDa. Observed band size: 49 kDa.

**Requested From:**

Japan

Laboratory Reagent For In Vitro Research Use Only

Not for resale without prior written consent from LifeSpan BioSciences, Inc.

Created on 9/27/2014

© 2014 LifeSpan BioSciences