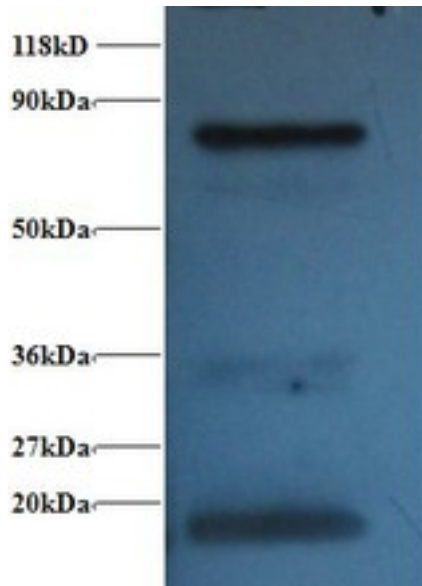


Hemoglobin Rabbit anti-Human Polyclonal (FITC) Antibody - LS-C211256 - LSBio

CatalogID:	LS-C211256
Target:	Hemoglobin
Host	Hemoglobin antibody was produced in Rabbit
Clonality:	Polyclonal
Isotype:	IgG
Conjugations:	Fluorescein (FITC)
Immunogen Species:	Hemoglobin antibody was raised against Human
Antigen Type:	Purified protein
Immunogen:	Hemoglobin antibody was raised against human Hemoglobin protein.
Specificity:	Human Hemoglobin
Reactivity:	Human
Purification:	Caprylic acid and ammonium sulfate precipitation
Presentation:	PBS, pH 7.4, 0.03% Proclin 300, 50% glycerol.
Recommended Storage:	Aliquot and store at -20°C or -80°C. Avoid freeze-thaw cycles.
Uses:	IHC, Western blot, ELISA (Optimal dilution to be determined by the researcher)
Size:	100 µg

Western Blot Image:



Western blot of Hemoglobin polyclonal Antibody at 2 ug/ml + 293T whole cell lysate at 20 ug. Secondary: Goat polyclonal to Rabbit IgG at 1:15000 dilution. Predicted band size: 16 kDa. Observed band size: 16 kDa Additional bands at: 30 kDa & 80 kDa. We are unsure as to the identity of these extra bands.

Requested From:

Japan

Laboratory Reagent For In Vitro Research Use Only

Not for resale without prior written consent from LifeSpan BioSciences, Inc.

Created on 9/27/2014

© 2014 LifeSpan BioSciences