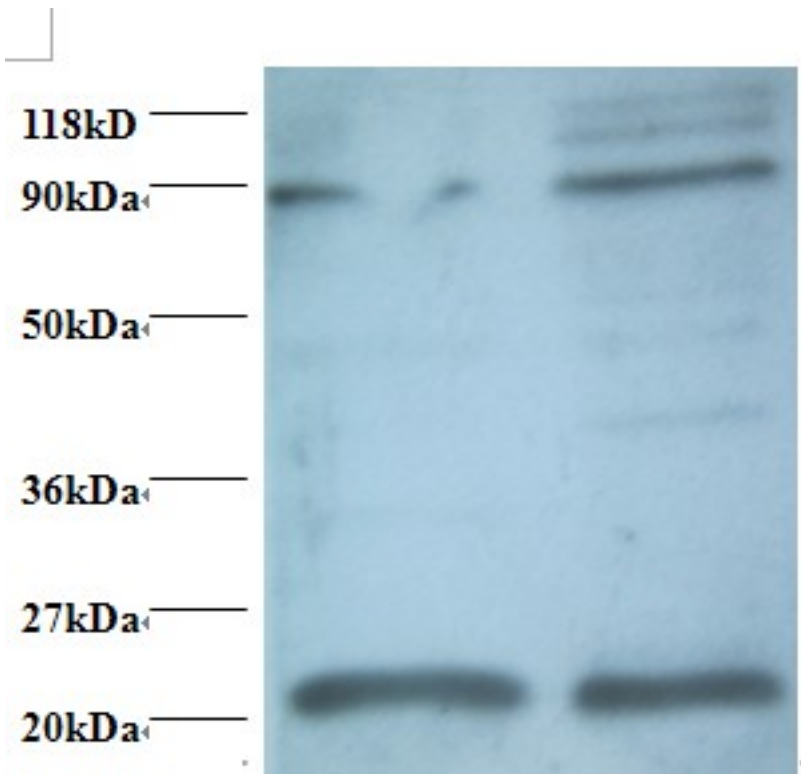


AP50 / AP2M1 Rabbit anti-Human Polyclonal (FITC) Antibody - LS-C211215 - LSBio

CatalogID:	LS-C211215
Target:	adaptor-related protein complex 2, mu 1 subunit (AP2M1)
Synonyms:	AP2M1 Antibody, Adaptin-mu2 Antibody, AP-2 complex subunit mu Antibody, AP-2 mu 2 chain Antibody, AP-2 mu chain Antibody, AP50 Antibody, CLAPM1 Antibody, Mu2 Antibody, KIAA0109 Antibody, HA2 50 kDa subunit Antibody
Host	AP2M1 antibody was produced in Rabbit
Clonality:	Polyclonal
Isotype:	IgG
Conjugations:	Fluorescein (FITC)
Immunogen Species:	AP50 / AP2M1 antibody was raised against Human
Antigen Type:	Recombinant protein
Immunogen:	AP50 / AP2M1 antibody was raised against recombinant human AP-2 complex subunit mu protein.
Specificity:	Human AP50 / AP2M1
Reactivity:	Human
Purification:	Caprylic acid and ammonium sulfate precipitation
Presentation:	PBS, pH 7.4, 0.03% Proclin 300, 50% glycerol.
Recommended Storage:	Aliquot and store at -20°C or -80°C. Avoid freeze-thaw cycles.
Uses:	IHC, Western blot, ELISA (Optimal dilution to be determined by the researcher)
Size:	100 µg

Western Blot Image:



Western blot of AP-2 complex subunit mu antibody at 2 ug/ml. Lane 1: EC109 whole cell lysate. Lane 2: 293T whole cell lysate. Secondary: Goat polyclonal to Rabbit IgG at 1:15000 dilution. Predicted band size: 48 kDa. Observed band size: 22 kDa Additional bands at: 88 kDa. We are unsure as to the identity of this extra band.

Requested From:

Japan

Laboratory Reagent For In Vitro Research Use Only

Not for resale without prior written consent from LifeSpan BioSciences, Inc.

Created on 9/27/2014

© 2014 LifeSpan BioSciences