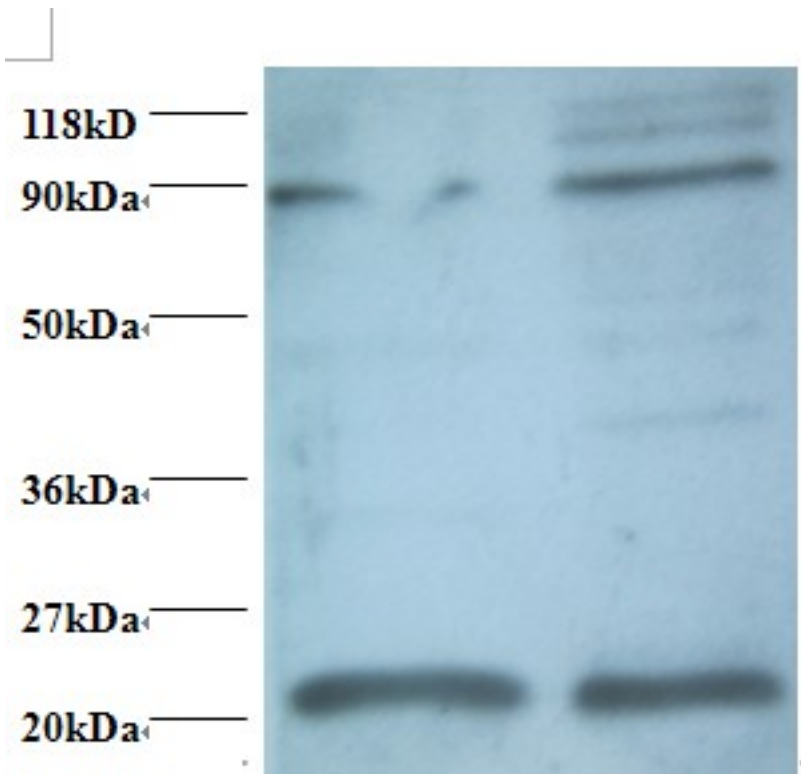


**AP50 / AP2M1 Rabbit anti-Human Polyclonal (HRP) Antibody - LS-C211213 - LSBio**

<b>CatalogID:</b>	LS-C211213
<b>Target:</b>	adaptor-related protein complex 2, mu 1 subunit (AP2M1)
<b>Synonyms:</b>	AP2M1 Antibody, Adaptin-mu2 Antibody, AP-2 complex subunit mu Antibody, AP-2 mu 2 chain Antibody, AP-2 mu chain Antibody, AP50 Antibody, CLAPM1 Antibody, Mu2 Antibody, KIAA0109 Antibody, HA2 50 kDa subunit Antibody
<b>Host</b>	AP2M1 antibody was produced in Rabbit
<b>Clonality:</b>	Polyclonal
<b>Isotype:</b>	IgG
<b>Conjugations:</b>	Horseradish Peroxidase (HRP)
<b>Immunogen Species:</b>	AP50 / AP2M1 antibody was raised against Human
<b>Antigen Type:</b>	Recombinant protein
<b>Immunogen:</b>	AP50 / AP2M1 antibody was raised against recombinant human AP-2 complex subunit mu protein.
<b>Specificity:</b>	Human AP50 / AP2M1
<b>Reactivity:</b>	Human
<b>Purification:</b>	Caprylic acid and ammonium sulfate precipitation
<b>Presentation:</b>	PBS, pH 7.4, 0.03% Proclin 300, 50% glycerol.
<b>Recommended Storage:</b>	Aliquot and store at -20°C or -80°C. Avoid freeze-thaw cycles.
<b>Uses:</b>	IHC, Western blot, ELISA (Optimal dilution to be determined by the researcher)
<b>Size:</b>	100 µg

**Western Blot Image:**



Western blot of AP-2 complex subunit mu antibody at 2 ug/ml. Lane 1: EC109 whole cell lysate. Lane 2: 293T whole cell lysate. Secondary: Goat polyclonal to Rabbit IgG at 1:15000 dilution. Predicted band size: 48 kDa. Observed band size: 22 kDa Additional bands at: 88 kDa. We are unsure as to the identity of this extra band.

**Requested From:**

Japan

Laboratory Reagent For In Vitro Research Use Only

Not for resale without prior written consent from LifeSpan BioSciences, Inc.

Created on 9/27/2014

© 2014 LifeSpan BioSciences