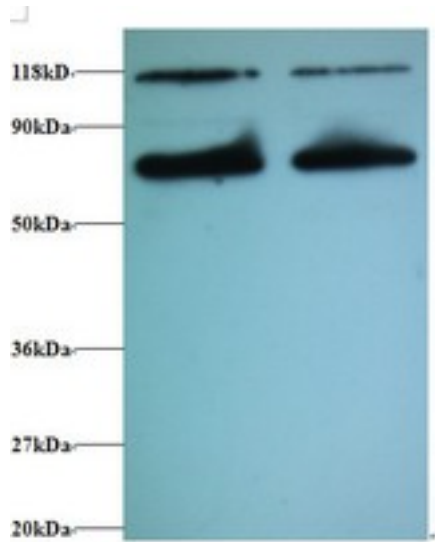


CALR / Calreticulin Rabbit anti-Human Polyclonal (FITC) Antibody - LS-C211171 - LSBio

CatalogID:	LS-C211171
Target:	calreticulin
Synonyms:	CALR Antibody, Calregulin Antibody, CC1qR Antibody, CRP55 Antibody, CRT Antibody, CRTC Antibody, ERp60 Antibody, Grp60 Antibody, RO Antibody, SSA Antibody, Calreticulin Antibody, HACBP Antibody
Host	CALR antibody was produced in Rabbit
Clonality:	Polyclonal
Isotype:	IgG
Conjugations:	Fluorescein (FITC)
Immunogen Species:	CALR / Calreticulin antibody was raised against Human
Antigen Type:	Recombinant protein
Immunogen:	CALR / Calreticulin antibody was raised against recombinant human Calreticulin protein.
Specificity:	Human Calreticulin
Reactivity:	Human
Purification:	Caprylic acid and ammonium sulfate precipitation
Presentation:	PBS, pH 7.4, 0.03% Proclin 300, 50% glycerol.
Recommended Storage:	Aliquot and store at -20°C or -80°C. Avoid freeze-thaw cycles.
Uses:	IHC, Western blot, ELISA (Optimal dilution to be determined by the researcher)
Size:	100 µg

Western Blot Image:



Western blot of Calreticulin antibody at 2 ug/ml. Lane 1: EC109 whole cell lysate. Lane 2: 293T whole cell lysate . Secondary: Goat polyclonal to Rabbit IgG at 1:15000 dilution . Predicted band size: 42 kDa . Observed band size: 70 kDa Additional bands at: 118 kDa. We are unsure as to the identity of these extra bands.

Requested From:

Japan

Laboratory Reagent For In Vitro Research Use Only

Not for resale without prior written consent from LifeSpan BioSciences, Inc.

Created on 9/27/2014

© 2014 LifeSpan BioSciences