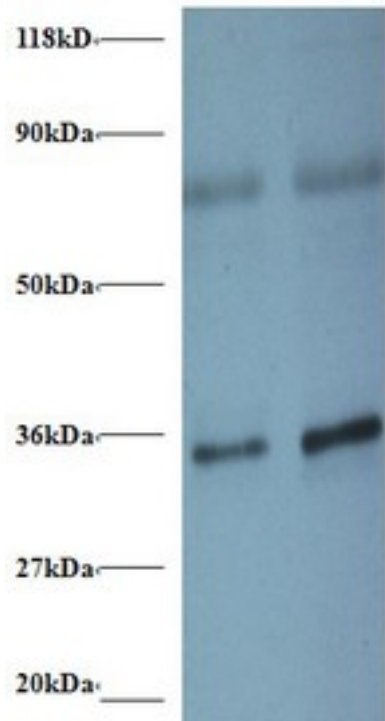


| SNRPG Rabbit anti-Human Polyclonal (FITC) Antibody - LS-C211134 - LSBio | |
|---|--|
| CatalogID: | LS-C211134 |
| Target: | small nuclear ribonucleoprotein polypeptide G (SNRPG) |
| Synonyms: | SNRPG Antibody, PBSCG Antibody, SMG Antibody, Sm protein G Antibody, SnRNP-G Antibody, Sm-G Antibody |
| Host | SNRPG antibody was produced in Rabbit |
| Clonality: | Polyclonal |
| Isotype: | IgG |
| Conjugations: | Fluorescein (FITC) |
| Immunogen Species: | SNRPG antibody was raised against Human |
| Antigen Type: | Recombinant protein |
| Immunogen: | SNRPG antibody was raised against recombinant human Small nuclear ribonucleoprotein G protein. |
| Specificity: | Human SNRPG |
| Reactivity: | Human |
| Purification: | Caprylic acid and ammonium sulfate precipitation |
| Presentation: | PBS, pH 7.4, 0.03% Proclin 300, 50% glycerol. |
| Recommended Storage: | Aliquot and store at -20°C or -80°C. Avoid freeze-thaw cycles. |
| Uses: | IHC, Western blot, ELISA (Optimal dilution to be determined by the researcher) |
| Size: | 100 µg |

Western Blot Image:



Western blot of Small nuclear ribonucleoprotein G antibody at 2 ug/ml. Lane 1: EC109 whole cell lysate. Lane 2: 293T whole cell lysate. Secondary: Goat polyclonal to Rabbit IgG at 1:15000 dilution. Predicted band size: 8.4 kDa. Observed band size: 36 kDa Additional bands at: 80 kDa. We are unsure as to the identity of these extra band.

Requested From:

Japan

Laboratory Reagent For In Vitro Research Use Only

Not for resale without prior written consent from LifeSpan BioSciences, Inc.

Created on 9/27/2014

© 2014 LifeSpan BioSciences