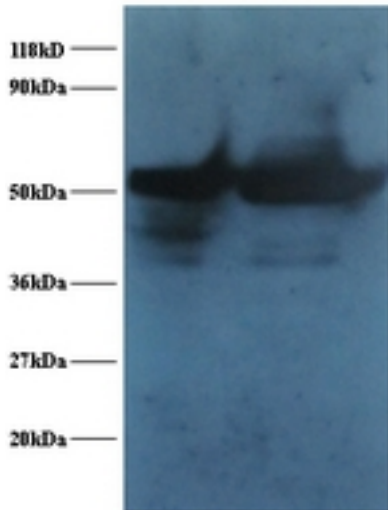


ENO1 / Alpha Enolase Rabbit anti-Human Polyclonal (HRP) Antibody - LS-C211091 - LSBio

CatalogID:	LS-C211091
Target:	enolase 1, (alpha) (ENO1)
Synonyms:	ENO1 Antibody, Alpha Enolase Antibody, Alpha enolase like 1 Antibody, ENO1L1 Antibody, Enolase 1 Antibody, MBP-1 Antibody, MBPB1 Antibody, MPB1 Antibody, MYC promoter-binding protein 1 Antibody, NNE Antibody, Phosphopyruvate hydratase Antibody, Alpha-enolase Antibody, Tau-crystallin Antibody, MBP1 Antibody, MPB-1 Antibody, C-myc promoter-binding protein Antibody, Enolase 1, (alpha) Antibody, Enolase-alpha Antibody, Non-neural enolase Antibody, Plasminogen-binding protein Antibody, PPH Antibody
Host	ENO1 antibody was produced in Rabbit
Clonality:	Polyclonal
Isotype:	IgG
Conjugations:	Horseradish Peroxidase (HRP)
Immunogen Species:	ENO1 / Alpha Enolase antibody was raised against Human
Reactivity:	Human
Purification:	Caprylic acid and ammonium sulfate precipitation
Presentation:	PBS, pH 7.4, 0.03% Proclin 300, 50% glycerol.
Recommended Storage:	Aliquot and store at -20°C or -80°C. Avoid freeze-thaw cycles.
Uses:	IHC, Western blot, ELISA (Optimal dilution to be determined by the researcher)
Size:	100 µg

Western Blot Image:



Western blot of Alpha-enolase antibody at 2 ug/ml. Lane 1: EC109 whole cell lysate. Lane 2: 293T whole cell lysate. Secondary: Goat polyclonal to Rabbit IgG at 1:15000 dilution. Predicted band size: 47.7 kDa. Observed band size: 47.7 kDa.

Requested From:

Japan

Laboratory Reagent For In Vitro Research Use Only

Not for resale without prior written consent from LifeSpan BioSciences, Inc.

Created on 9/27/2014

© 2014 LifeSpan BioSciences