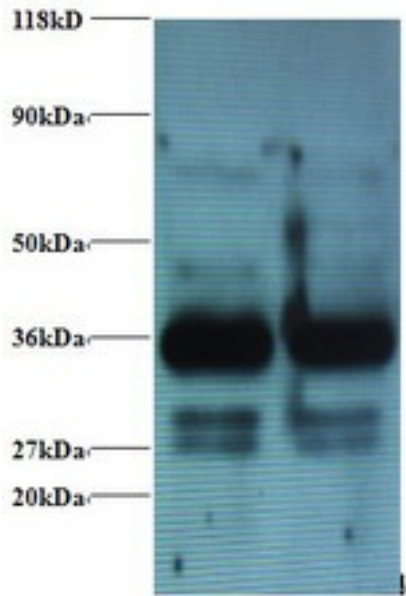


ANXA2 / Annexin A2 Rabbit anti-Human Polyclonal (FITC) Antibody - LS-C211024 - LSBio	
CatalogID:	LS-C211024
Target:	annexin A2 (ANXA2)
Synonyms:	ANXA2 Antibody, Annexin A2 Antibody, Annexin-2 Antibody, ANX2 Antibody, Calpactin I heavy chain Antibody, Chromobindin-8 Antibody, CAL1H Antibody, Calpactin I heavy polypeptide Antibody, Chromobindin 8 Antibody, LPC2 Antibody, LIP2 Antibody, Lipocortin II Antibody, p36 Antibody, LPC2D Antibody, PAP-IV Antibody, Protein I Antibody, Annexin II Antibody, ANX2L4 Antibody, Calpactin-1 heavy chain Antibody
Family / Subfamily:	Annexin
Host	ANXA2 antibody was produced in Rabbit
Clonality:	Polyclonal
Isotype:	IgG
Conjugations:	Fluorescein (FITC)
Immunogen Species:	ANXA2 / Annexin A2 antibody was raised against Human
Antigen Type:	Recombinant protein
Immunogen:	ANXA2 / Annexin A2 antibody was raised against recombinant human Annexin A2 protein.
Specificity:	Human ANXA2/Annexin A2/Annexin II
Reactivity:	Human
Purification:	Caprylic acid and ammonium sulfate precipitation
Presentation:	PBS, pH 7.4, 0.03% Proclin 300, 50% glycerol.
Recommended Storage:	Aliquot and store at -20°C or -80°C. Avoid freeze-thaw cycles.
Uses:	IHC, Western blot, ELISA (Optimal dilution to be determined by the researcher)
Size:	100 µg

Western Blot Image:



Western blot of Annexin A2 antibody at 2 ug/ml . Lane 1:293T whole cell lysate. Lane 2: EC109 whole cell lysate . Secondary: Goat polyclonal to Rabbit IgG at 1:15000 dilution . Predicted band size: 37 kDa . Observed band size: 37 kDa Additional bands at: 30 kDa. We are unsure as to the identity of this extra band.

Requested From:

Japan

Laboratory Reagent For In Vitro Research Use Only

Not for resale without prior written consent from LifeSpan BioSciences, Inc.

Created on 9/27/2014

© 2014 LifeSpan BioSciences