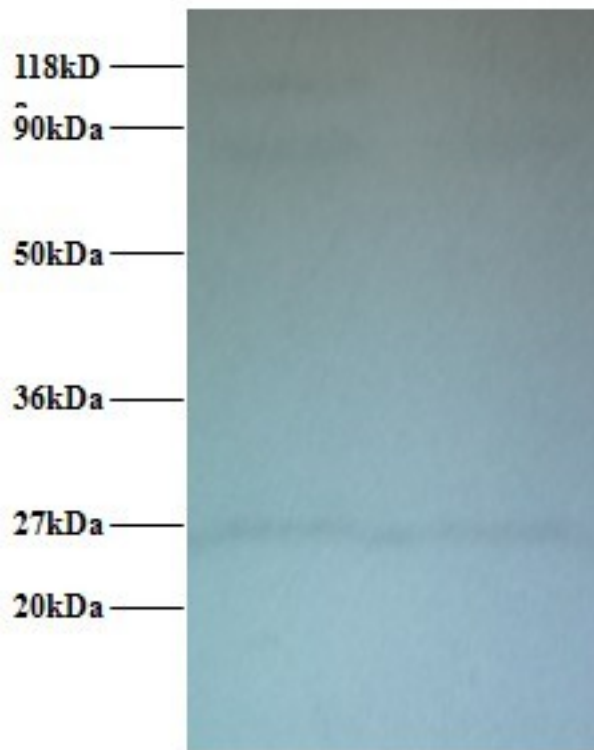


CTNNB1 / Beta Catenin Rabbit anti-Human Polyclonal (FITC) Antibody - LS-C210943 - LSBio	
CatalogID:	LS-C210943
Target:	catenin (cadherin-associated protein), beta 1, 88kDa (CTNNB1)
Synonyms:	CTNNB1 Antibody, Beta-catenin Antibody, Catenin beta-1 Antibody, CTNNB Antibody, Beta Catenin Antibody
Family / Subfamily:	Catenin / not assigned-Catenin
Host	CTNNB1 antibody was produced in Rabbit
Clonality:	Polyclonal
Isotype:	IgG
Conjugations:	Fluorescein (FITC)
Immunogen Species:	CTNNB1 / Beta Catenin antibody was raised against Human
Antigen Type:	Recombinant protein
Immunogen:	CTNNB1 / Beta Catenin antibody was raised against recombinant human Catenin beta-1 protein.
Specificity:	Human CTNNB1 / Beta Catenin
Reactivity:	Human
Purification:	Caprylic acid and ammonium sulfate precipitation
Presentation:	PBS, pH 7.4, 0.03% Proclin 300, 50% glycerol.
Recommended Storage:	Aliquot and store at -20°C or -80°C. Avoid freeze-thaw cycles.
Uses:	IHC, Western blot, ELISA (Optimal dilution to be determined by the researcher)
Size:	100 µg

Western Blot Image:



Western blot of Catenin beta-1 antibody at 2 ug/ml. Lane 1: EC109 whole cell lysate. Lane 2: 293T whole cell lysate. Secondary: Goat polyclonal to Rabbit IgG at 1:15000 dilution. Predicted band size: 86 kDa. Observed band size: 86 kDa Additional bands at: 27 kDa. We are unsure as to the identity of this extra band.

Requested From:

Japan

Laboratory Reagent For In Vitro Research Use Only

Not for resale without prior written consent from LifeSpan BioSciences, Inc.

Created on 9/27/2014

© 2014 LifeSpan BioSciences