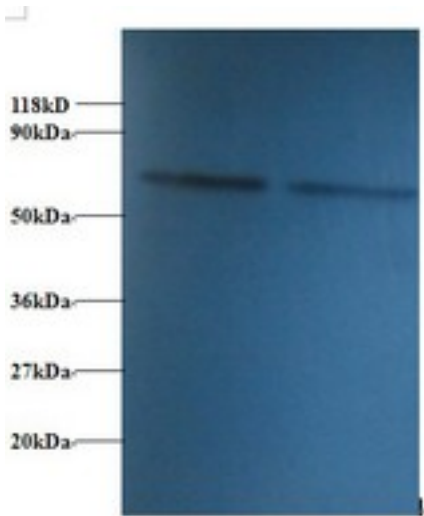


PDI / P4HB Rabbit anti-Human Polyclonal (HRP) Antibody - LS-C210937 - LSBio

CatalogID:	LS-C210937
Target:	prolyl 4-hydroxylase, beta polypeptide (P4HB)
Synonyms:	P4HB Antibody, ERBA2L Antibody, DSI Antibody, GIT Antibody, p4HB Antibody, p4Hbeta Antibody, PDIA1 Antibody, PHDB Antibody, PO4DB Antibody, PROHB Antibody, Protocollagen hydroxylase Antibody, Protein disulfide-isomerase Antibody, PO4HB Antibody, PDI Antibody
Host	P4HB antibody was produced in Rabbit
Clonality:	Polyclonal
Isotype:	IgG
Conjugations:	Horseradish Peroxidase (HRP)
Immunogen Species:	PDI / P4HB antibody was raised against Human
Antigen Type:	Recombinant protein
Immunogen:	PDI / P4HB antibody was raised against recombinant human Protein disulfide-isomerase.
Specificity:	Human PDI / P4HB
Reactivity:	Human
Purification:	Caprylic acid and ammonium sulfate precipitation
Presentation:	PBS, pH 7.4, 0.03% Proclin 300, 50% glycerol.
Recommended Storage:	Aliquot and store at -20°C or -80°C. Avoid freeze-thaw cycles.
Uses:	IHC, Western blot, ELISA (Optimal dilution to be determined by the researcher)
Size:	100 µg

Western Blot Image:



Western blot of Protein disulfide-isomerase antibody at 2 ug/ml. Lane 1:293T whole cell lysate. Lane 2: EC109 whole cell lysate. Secondary: Goat polyclonal to Rabbit IgG at 1:15000 dilution. Predicted band size: 30 kDa. Observed band size: 70 kDa.

Requested From:

Japan

Laboratory Reagent For In Vitro Research Use Only

Not for resale without prior written consent from LifeSpan BioSciences, Inc.

Created on 9/27/2014

© 2014 LifeSpan BioSciences