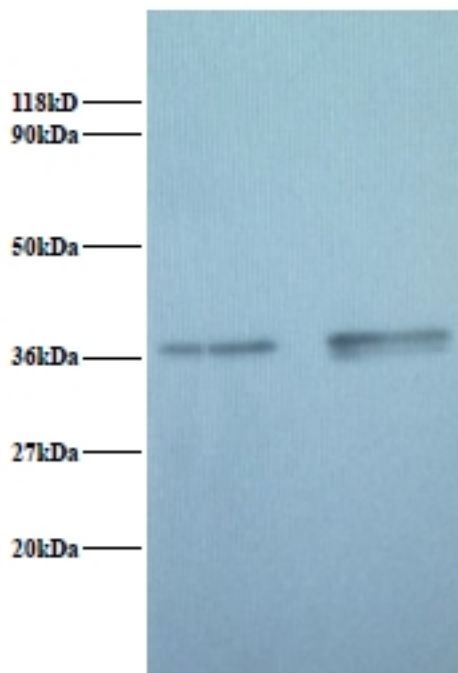


GAPDH Rabbit anti-Human Polyclonal (FITC) Antibody - LS-C210928 - LSBio

CatalogID:	LS-C210928
Target:	glyceraldehyde-3-phosphate dehydrogenase (GAPDH)
Synonyms:	GAPDH Antibody, A1 40 kd subunit Antibody, Activator 1 40 kd subunit Antibody, G3PD Antibody, GAPD Antibody, G3pdh Antibody, Rfc40 Antibody, Rf-c 40 kd subunit Antibody
Host	GAPDH antibody was produced in Rabbit
Clonality:	Polyclonal
Isotype:	IgG
Conjugations:	Fluorescein (FITC)
Immunogen Species:	GAPDH antibody was raised against Human
Antigen Type:	Recombinant protein
Immunogen:	GAPDH antibody was raised against recombinant human Glyceraldehyde-3-phosphate dehydrogenase protein.
Specificity:	Human GAPDH
Reactivity:	Human
Purification:	Caprylic acid and ammonium sulfate precipitation
Presentation:	PBS, pH 7.4, 0.03% Proclin 300, 50% glycerol.
Recommended Storage:	Aliquot and store at -20°C or -80°C. Avoid freeze-thaw cycles.
Uses:	IHC, Western blot, ELISA (Optimal dilution to be determined by the researcher)
Size:	100 µg

Western Blot Image:



Western blot of Glyceraldehyde-3-phosphate dehydrogenase antibody at 2 ug/ml. Lane 1: EC109 whole cell lysate. Lane 2: 293T whole cell lysate. Secondary: Goat polyclonal to Rabbit IgG at 1:15000 dilution. Predicted band size: 37 kDa. Observed band size: 37 kDa.

Requested From:

Japan

Laboratory Reagent For In Vitro Research Use Only

Not for resale without prior written consent from LifeSpan BioSciences, Inc.

Created on 9/27/2014

© 2014 LifeSpan BioSciences