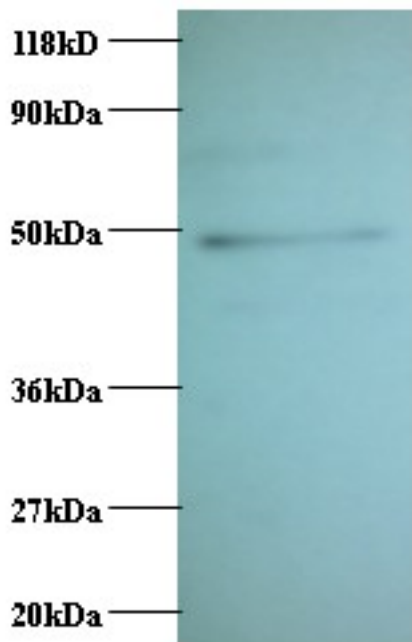


**CCL2 / MCP-1 Rabbit anti-Human Polyclonal (FITC) Antibody - LS-C210846 - LSBio**

<b>CatalogID:</b>	LS-C210846
<b>Target:</b>	chemokine (C-C motif) ligand 2 (CCL2)
<b>Synonyms:</b>	CCL2 Antibody, C-C motif chemokine 2 Antibody, Chemokine (C-C motif) ligand 2 Antibody, GDCF-2 Antibody, HC11 Antibody, HSMCR30 Antibody, MCP1 Antibody, SCYA2 Antibody, Small-inducible cytokine A2 Antibody, Monocyte secretory protein JE Antibody, MCAF Antibody, MCP-1 Antibody, Monocyte chemotactic protein 1 Antibody, SMC-CF Antibody
<b>Family / Subfamily:</b>	Intercrine / Intercrine beta
<b>Host</b>	CCL2 antibody was produced in Rabbit
<b>Clonality:</b>	Polyclonal
<b>Isotype:</b>	IgG
<b>Conjugations:</b>	Fluorescein (FITC)
<b>Immunogen Species:</b>	CCL2 / MCP-1 antibody was raised against Human
<b>Antigen Type:</b>	Recombinant protein
<b>Immunogen:</b>	CCL2 / MCP-1 antibody was raised against recombinant human C-C motif chemokine 2 protein.
<b>Specificity:</b>	Human CCL2 / MCP-1
<b>Reactivity:</b>	Human
<b>Purification:</b>	Caprylic acid and ammonium sulfate precipitation
<b>Presentation:</b>	PBS, pH 7.4, 0.03% Proclin 300, 50% glycerol.
<b>Recommended Storage:</b>	Aliquot and store at -20°C or -80°C. Avoid freeze-thaw cycles.
<b>Uses:</b>	IHC, Western blot, ELISA (Optimal dilution to be determined by the researcher)
<b>Size:</b>	100 µg

**Western Blot Image:**



Western blot of C-C motif chemokine 2 Antibody at 2 ug/ml + EC109 whole cell lysate at 20 ug. Secondary: Goat polyclonal to Rabbit IgG at 1:15000 dilution. Predicted band size: 11 kDa. Observed band size: 50 kDa.

**Requested From:**

Japan

Laboratory Reagent For In Vitro Research Use Only

Not for resale without prior written consent from LifeSpan BioSciences, Inc.

Created on 9/27/2014

© 2014 LifeSpan BioSciences