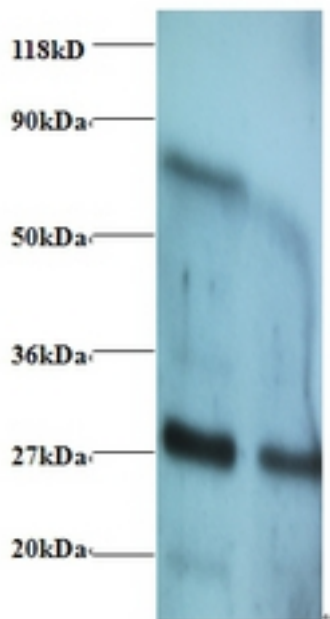


IFN Gamma / Interferon Gamma Rabbit anti-Human Polyclonal (FITC) Antibody - LS-C210780 - LSBio	
CatalogID:	LS-C210780
Target:	interferon, gamma (IFNG)
Synonyms:	IFNG Antibody, IFG Antibody, Immune interferon Antibody, IFI Antibody, Interferon gamma Antibody, IFN-gamma Antibody, Interferon, gamma Antibody
Family / Subfamily:	Interferon / not assigned-Interferon
Host	IFNG antibody was produced in Rabbit
Clonality:	Polyclonal
Isotype:	IgG
Conjugations:	Fluorescein (FITC)
Immunogen Species:	IFN Gamma / Interferon Gamma antibody was raised against Human
Antigen Type:	Recombinant protein
Immunogen:	IFN Gamma / Interferon Gamma antibody was raised against recombinant human Interferon gamma protein.
Specificity:	Human IFN Gamma / Interferon Gamma
Reactivity:	Human
Purification:	Caprylic acid and ammonium sulfate precipitation
Presentation:	PBS, pH 7.4, 0.03% Proclin 300, 50% glycerol.
Recommended Storage:	Aliquot and store at -20°C or -80°C. Avoid freeze-thaw cycles.
Uses:	IHC, Western blot, ELISA (Optimal dilution to be determined by the researcher)
Size:	100 µg

Western Blot Image:



Western blot of Interferon gamma antibody at 2 ug/ml. Lane 1: EC109 whole cell lysate. Lane 2: 293T whole cell lysate. Secondary: Goat polyclonal to Rabbit IgG at 1:15000 dilution. Predicted band size: 18.3 kDa. Observed band size: 27 kDa. Additional bands at: 70 kDa. We are unsure as to the identity of this extra band.

Requested From:

Japan

Laboratory Reagent For In Vitro Research Use Only

Not for resale without prior written consent from LifeSpan BioSciences, Inc.

Created on 9/27/2014

© 2014 LifeSpan BioSciences