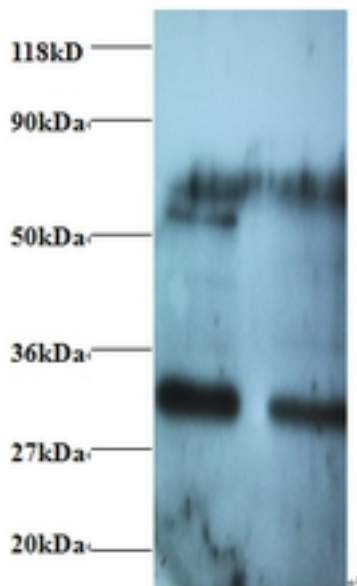


ARHGEF18 Rabbit anti-Human Polyclonal (FITC) Antibody - LS-C210719 - LSBio

CatalogID:	LS-C210719
Target:	Rho/Rac guanine nucleotide exchange factor (GEF) 18 (ARHGEF18)
Synonyms:	ARHGEF18 Antibody, p114-RhoGEF Antibody, KIAA0521 Antibody, SA-RhoGEF Antibody, Septin-associated RhoGEF Antibody, p114RhoGEF Antibody, p114-RHO-GEF Antibody
Host	ARHGEF18 antibody was produced in Rabbit
Clonality:	Polyclonal
Isotype:	IgG
Conjugations:	Fluorescein (FITC)
Immunogen Species:	ARHGEF18 antibody was raised against Human
Antigen Type:	Recombinant protein
Immunogen:	ARHGEF18 antibody was raised against recombinant human Rho guanine nucleotide exchange factor 18 protein.
Specificity:	Human ARHGEF18
Reactivity:	Human, Dog
Purification:	Caprylic acid and ammonium sulfate precipitation
Presentation:	PBS, pH 7.4, 0.03% Proclin 300, 50% glycerol.
Recommended Storage:	Aliquot and store at -20°C or -80°C. Avoid freeze-thaw cycles.
Uses:	IHC, Western blot, ELISA (Optimal dilution to be determined by the researcher)
Size:	100 µg

Western Blot Image:



Western blot of Rho guanine nucleotide exchange factor 18 antibody at 2 ug/ml. Lane 1: EC109 whole cell lysate. Lane 2: 293T whole cell lysate. Secondary: Goat polyclonal to Rabbit IgG at 1:15000 dilution. Predicted band size: 129 kDa. Observed band size: 30 kDa. Additional bands at: 60 kDa. We are unsure as to the identity of this extra band.

Requested From:

Japan

Laboratory Reagent For In Vitro Research Use Only

Not for resale without prior written consent from LifeSpan BioSciences, Inc.

Created on 9/27/2014

© 2014 LifeSpan BioSciences