

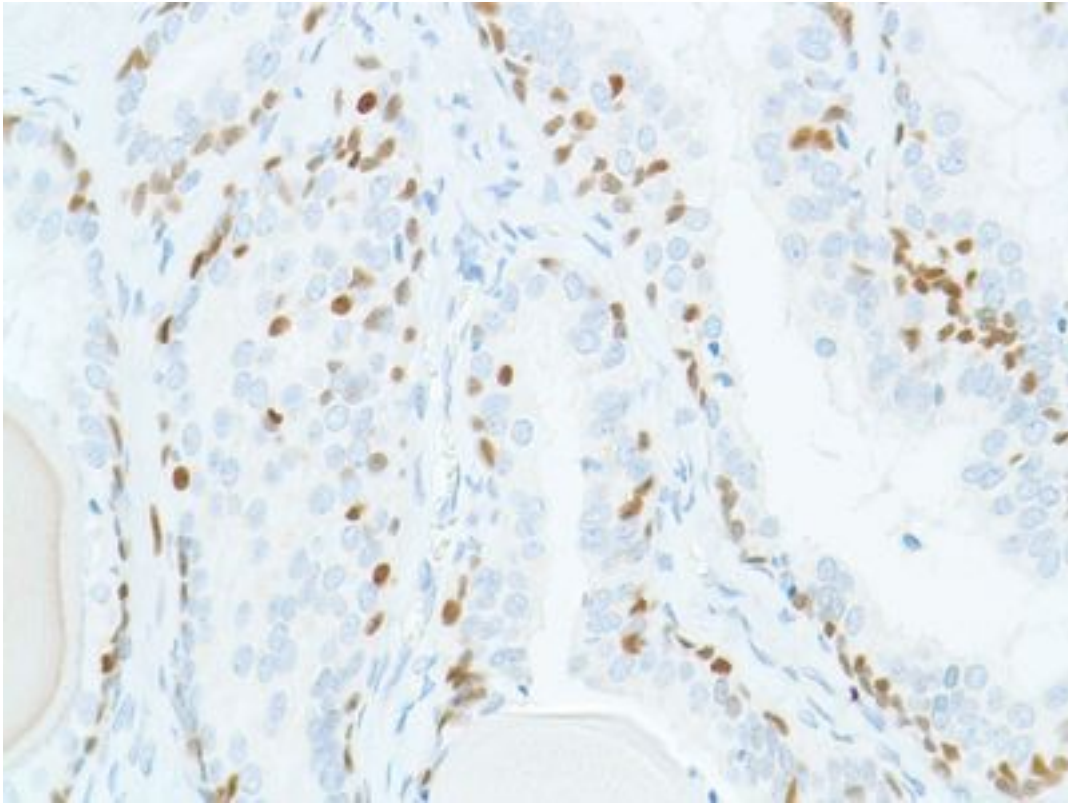
SOX2 Rabbit anti-Human Monoclonal (N-Terminus) (SP76) Antibody - LS-C210330 - LSBio	
<b>CatalogID:</b>	LS-C210330
<b>Target:</b>	SRY (sex determining region Y)-box 2 (SOX2)
<b>Synonyms:</b>	SOX2 Antibody, MCOPS3 Antibody, Transcription factor SOX2 Antibody, ANOP3 Antibody, Transcription factor SOX-2 Antibody, SRY-related HMG-box gene 2 Antibody
<b>Family / Subfamily:</b>	Transcription factor
<b>Host</b>	SOX2 antibody was produced in Rabbit
<b>Clonality:</b>	Monoclonal
<b>Isotype:</b>	IgG
<b>Clone Name:</b>	SP76
<b>Immunogen Species:</b>	SOX2 antibody was raised against Human
<b>Antigen Type:</b>	Synthetic peptide
<b>Immunogen:</b>	SOX2 antibody was raised against synthetic peptide corresponding to N-terminus of human SOX-2 protein.
<b>Specificity:</b>	Human SOX2
<b>Epitope:</b>	N-Terminus
<b>Reactivity:</b>	Human
<b>Predicted Reactivity:</b>	Human, Bovine, Dog, Frog
<b>Purification:</b>	Protein A/G purified
<b>Presentation:</b>	PBS, pH 7.6, 1% BSA, 0.1% sodium azide
<b>Recommended Storage:</b>	Store at 2-8°C. Do not freeze.
<b>Usage Summary:</b>	<p><b>IMMUNOHISTOCHEMISTRY:</b> Formalin-fixed, paraffin-embedded tissues are suitable for use with this primary antibody. Deparaffinization: Deparaffinize slides using xylene or xylene alternative and graded alcohols. Antibody Dilution: If using the concentrate format of this product, dilute the antibody 1:100. Antigen Retrieval: Boil tissue section in 10 mM citrate buffer, pH 6.0 for 10 min followed by cooling at room temperature for 20 min. Primary Antibody Incubation: Incubate for 30 minutes at room temperature. Slide Washing: Slides must be washed in between steps. Rinse slides with PBS/0.05% Tween. IHC Positive control: Newborn brain.</p> <p><b>WESTERN BLOT:</b> Recommended starting protocol: Dilute the antibody 1:25. Incubate for 1 hour at room temperature. The dilution is an estimate. actual results may differ because of variability in methods and protocols. Positive Control: MCF7 cell lysate.</p>
<b>Uses:</b>	IHC - Paraffin (1:100), Western blot (1:25) (Optimal dilution to be determined by the researcher)
<b>Size:</b>	500 µl

**Immunohistochemistry Image:**



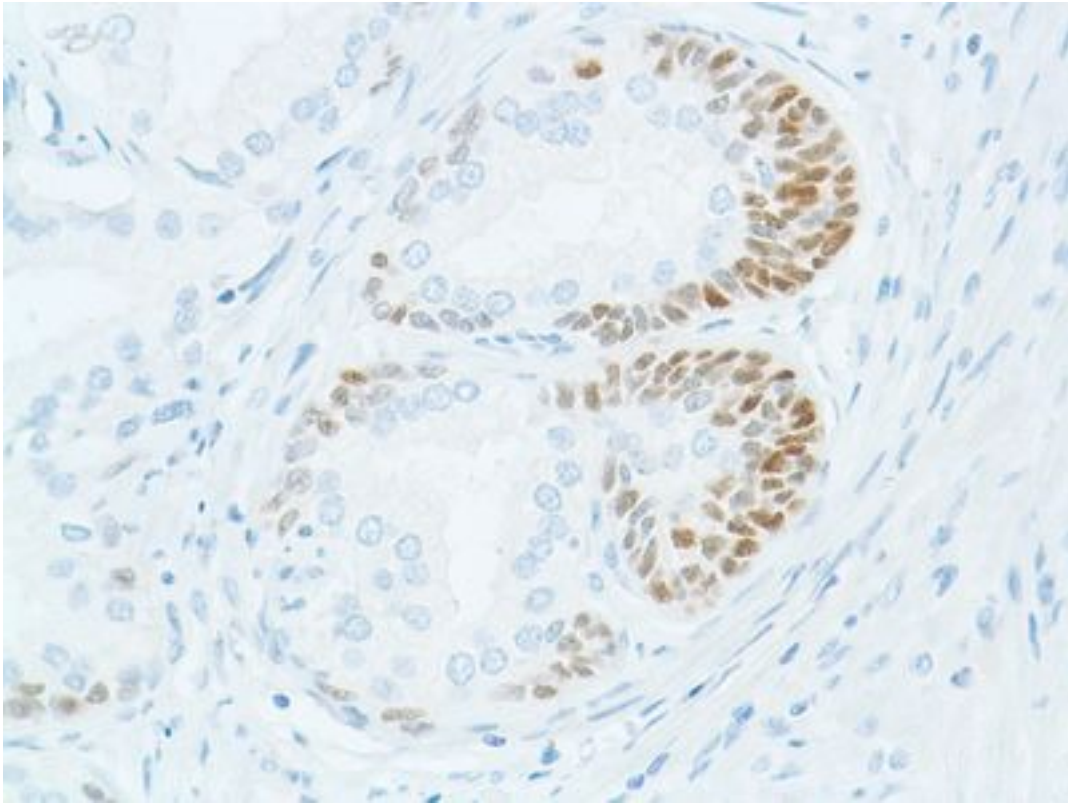
Immunohistochemistry of Human prostate stained with anti-sox-2 antibody

**Immunohistochemistry Image:**



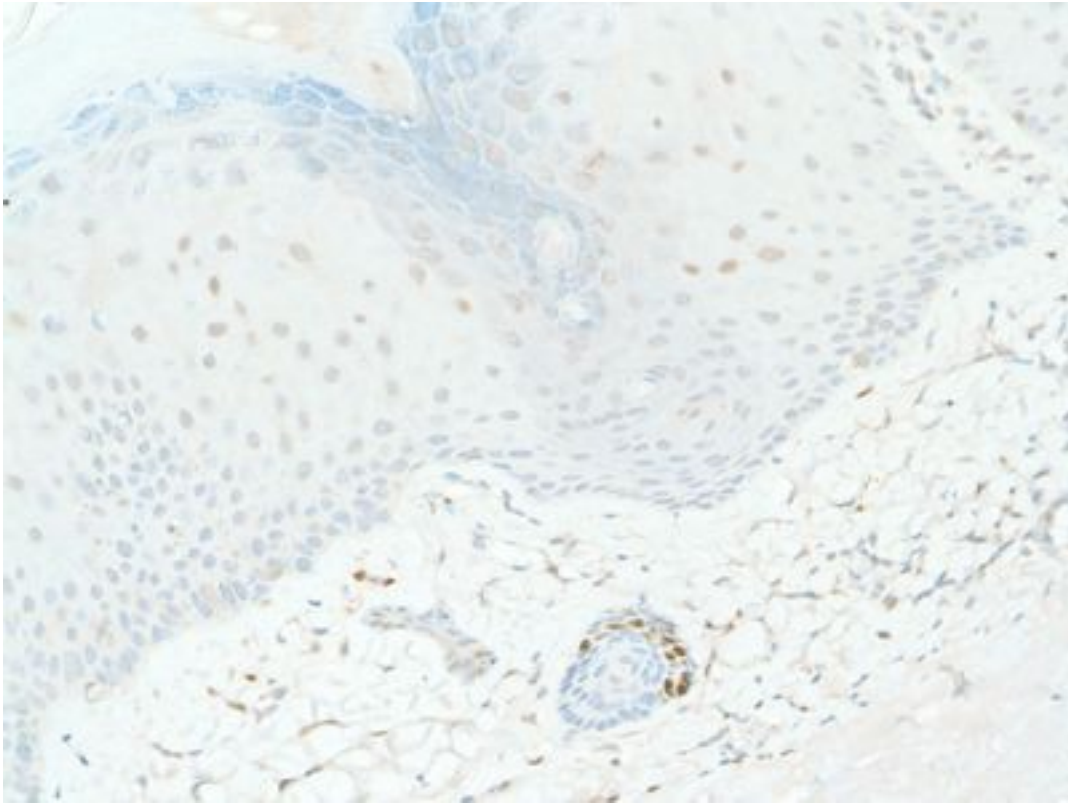
Immunohistochemistry of Human prostate PIN stained with anti-sox-2 antibody

**Immunohistochemistry Image:**



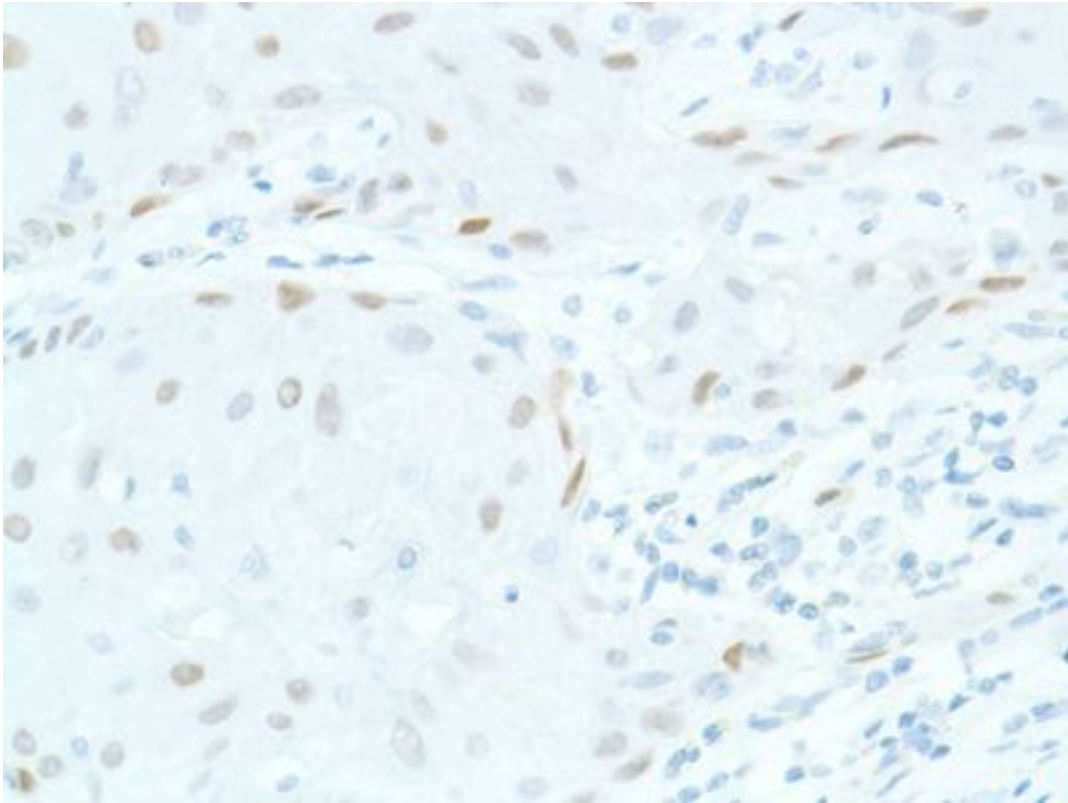
Immunohistochemistry of Human prostate hyperplasia stained with anti-sox-2 antibody

**Immunohistochemistry Image:**



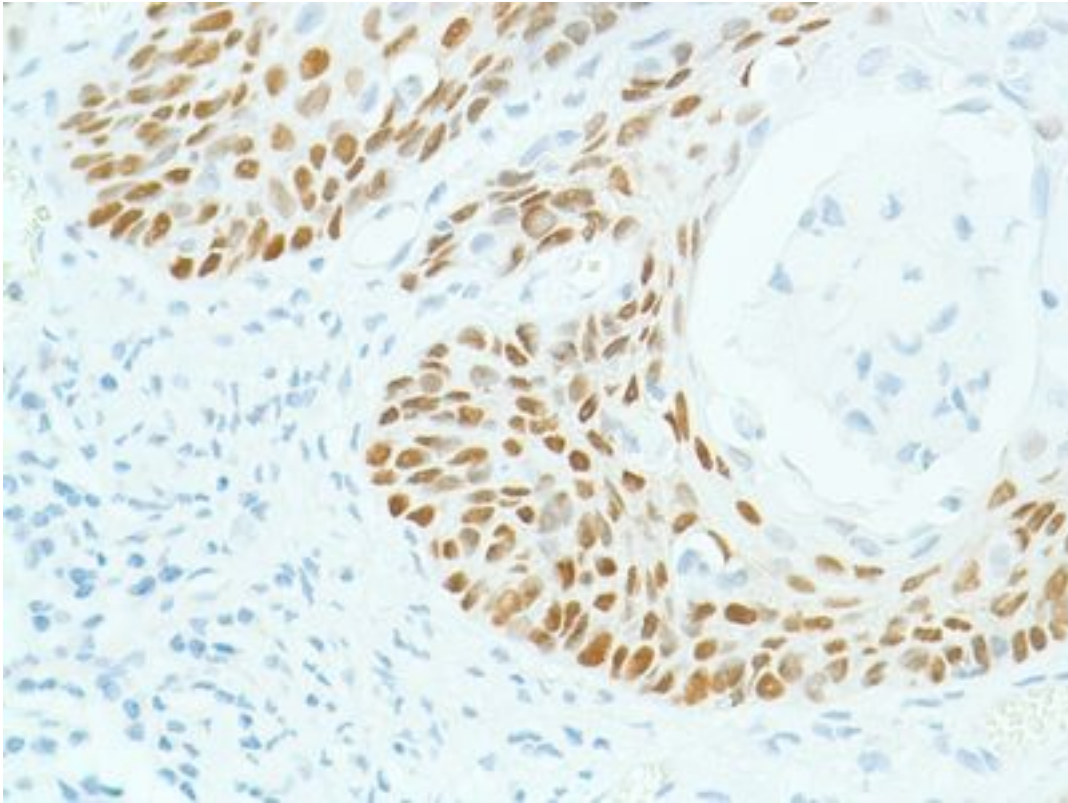
Immunohistochemistry of Human skin stained with anti-sox-2 antibody

**Immunohistochemistry Image:**



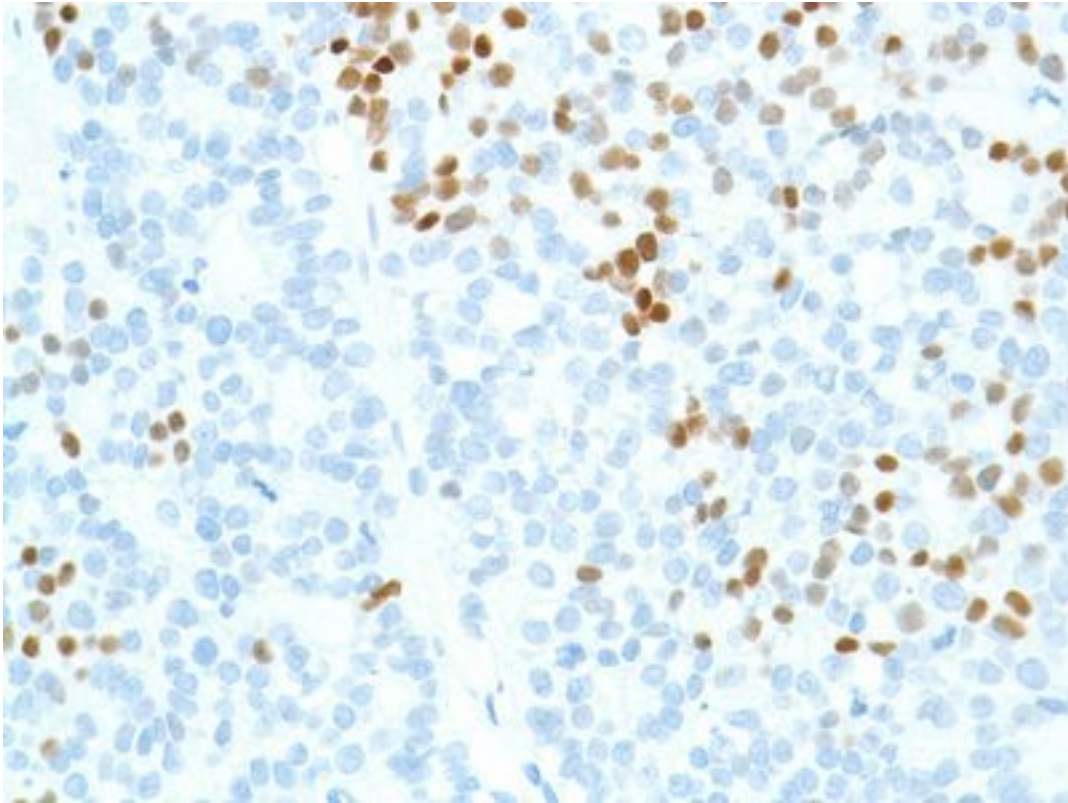
Immunohistochemistry of Human Skin SCC stained with anti-Sox-2 antibody

**Immunohistochemistry Image:**



Immunohistochemistry of Human cervical SCC stained with anti-sox-2 antibody

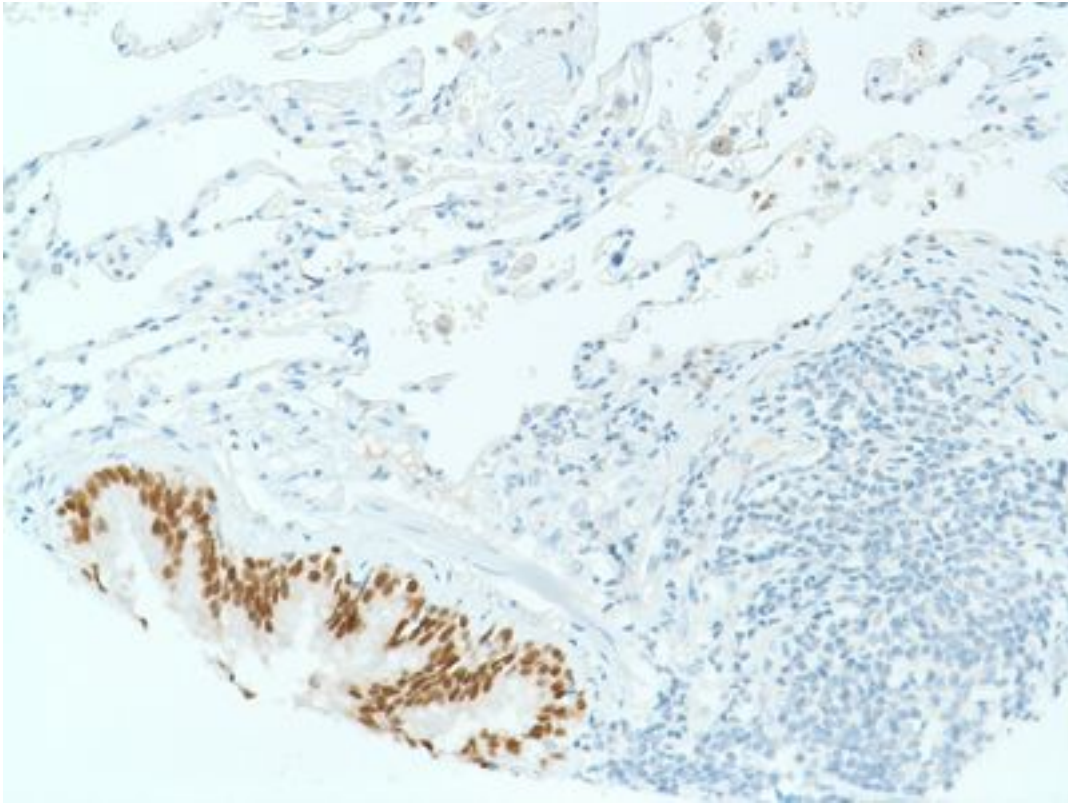
**Immunohistochemistry Image:**



Immunohistochemistry of Human ovarian adenocarcinoma stained with anti-sox-2 antibody

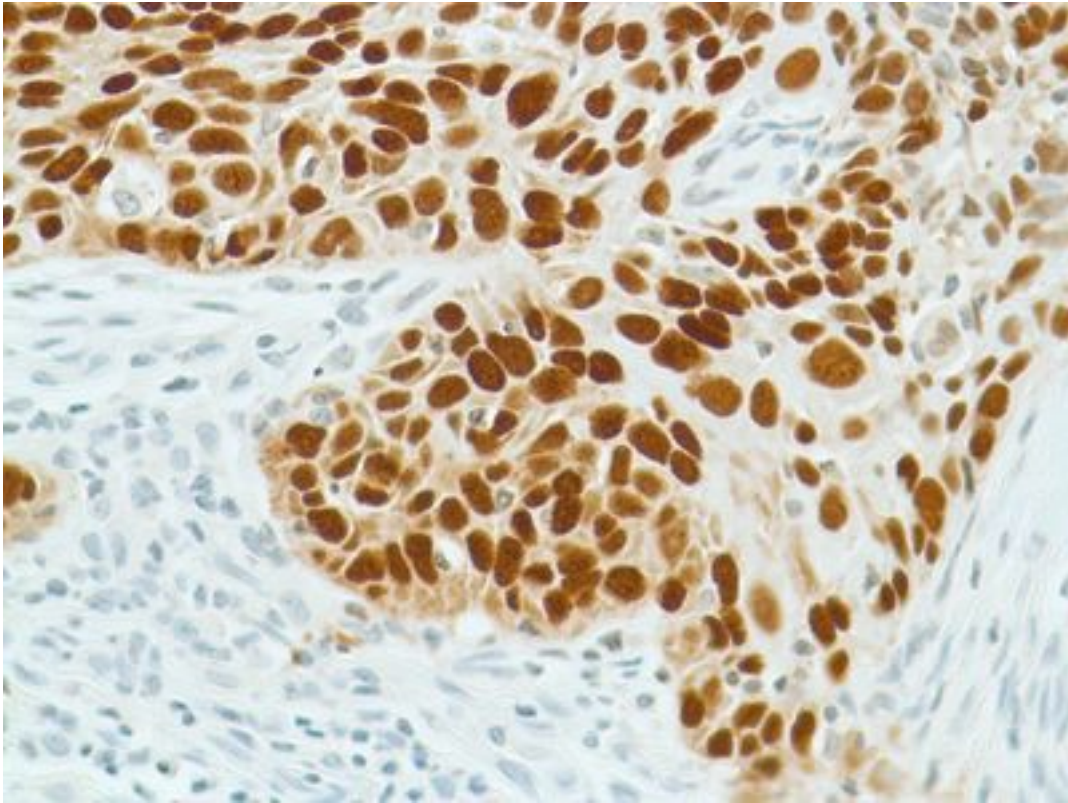


**Immunohistochemistry Image:**



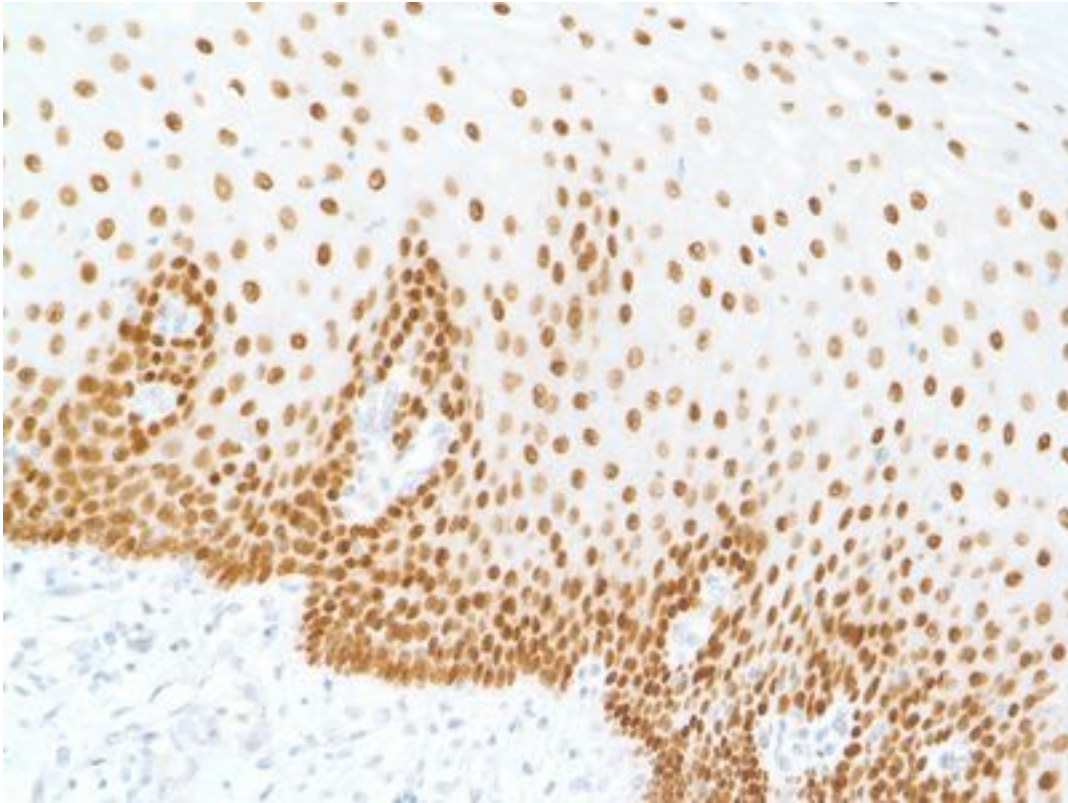
Immunohistochemistry of Human lung stained with anti-sox-2 antibody

**Immunohistochemistry Image:**



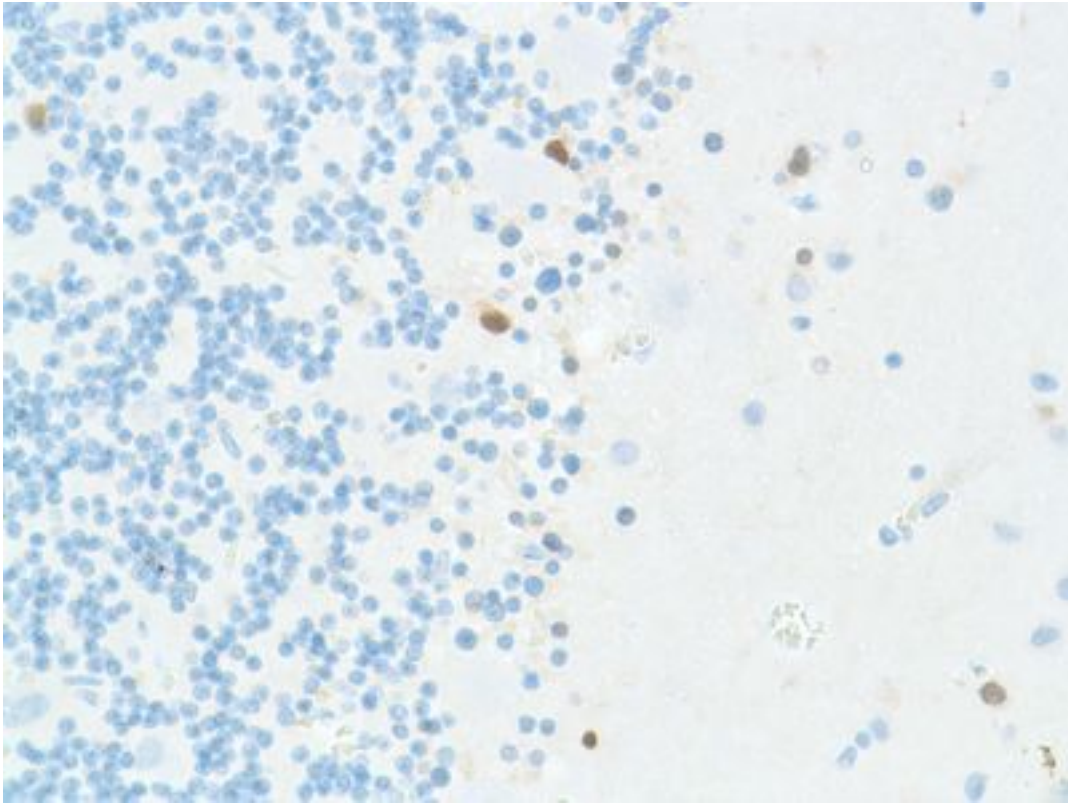
Immunohistochemistry of Human lung squamous cell carcinoma stained with anti-sox-2 antibody

**Immunohistochemistry Image:**



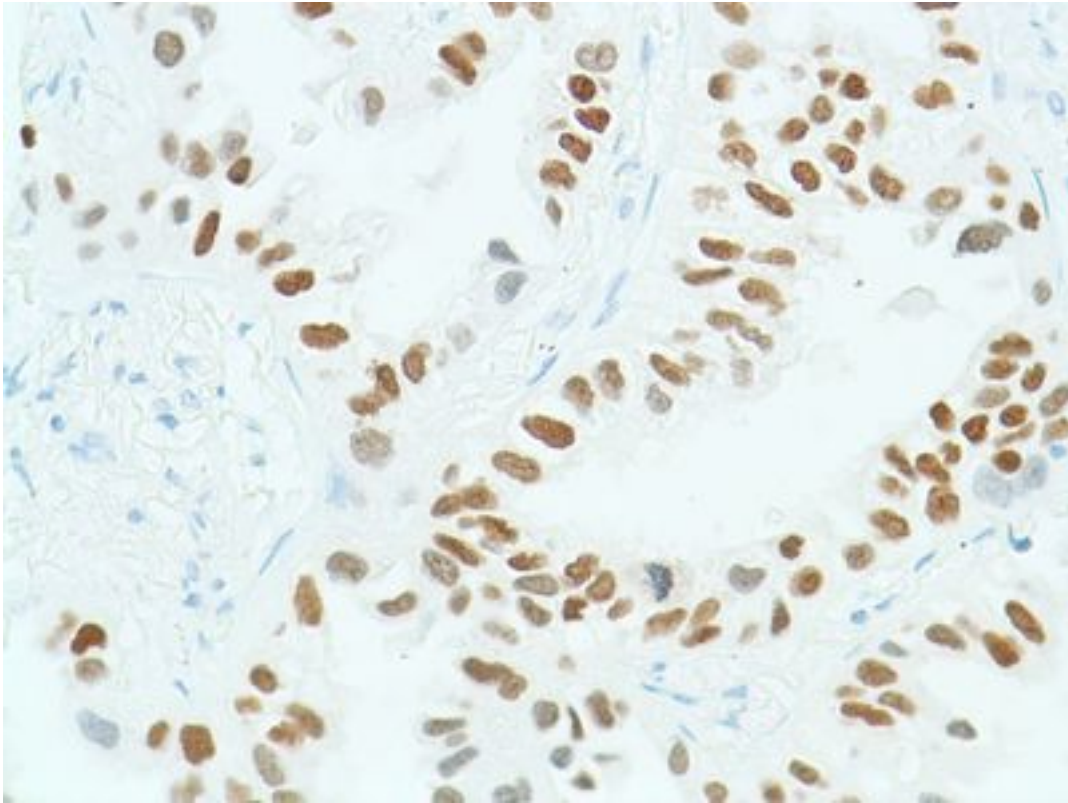
Immunohistochemistry of Human esophagus stained with anti-sox-2 antibody

**Immunohistochemistry Image:**



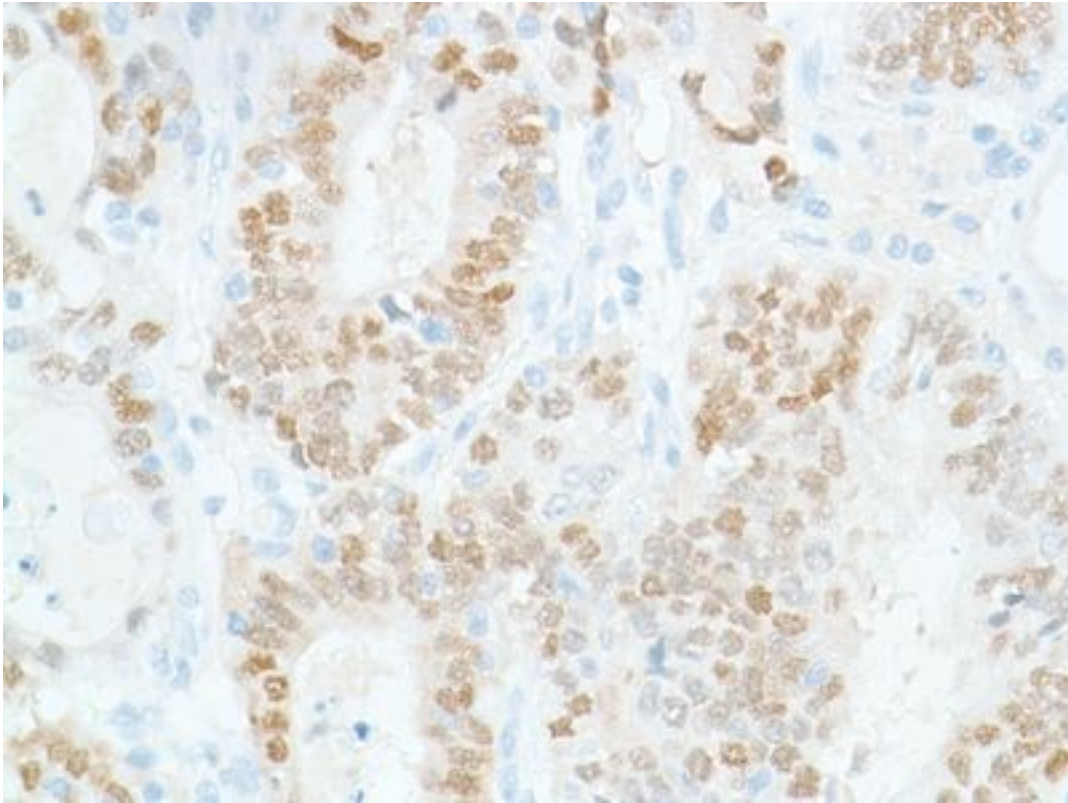
Immunohistochemistry of Human cerebellum stained with anti-sox-2 antibody

**Immunohistochemistry Image:**



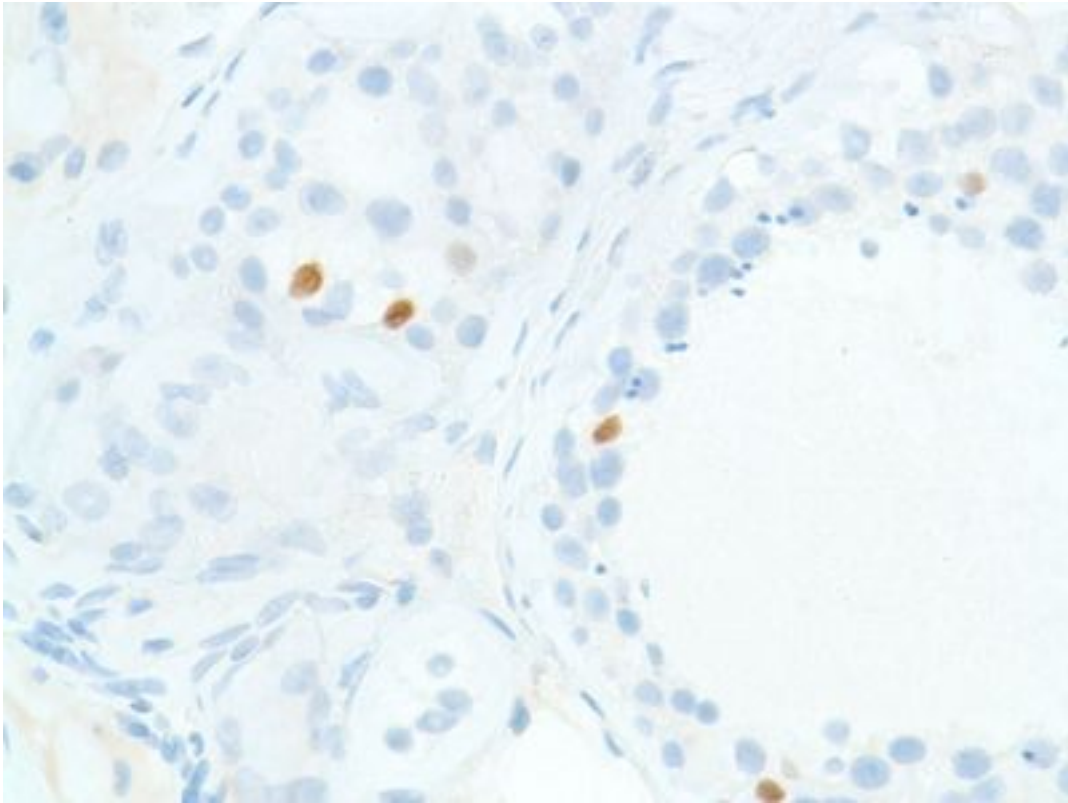
Immunohistochemistry of Human lung adenocarcinoma stained with anti-sox-2 antibody

**Immunohistochemistry Image:**



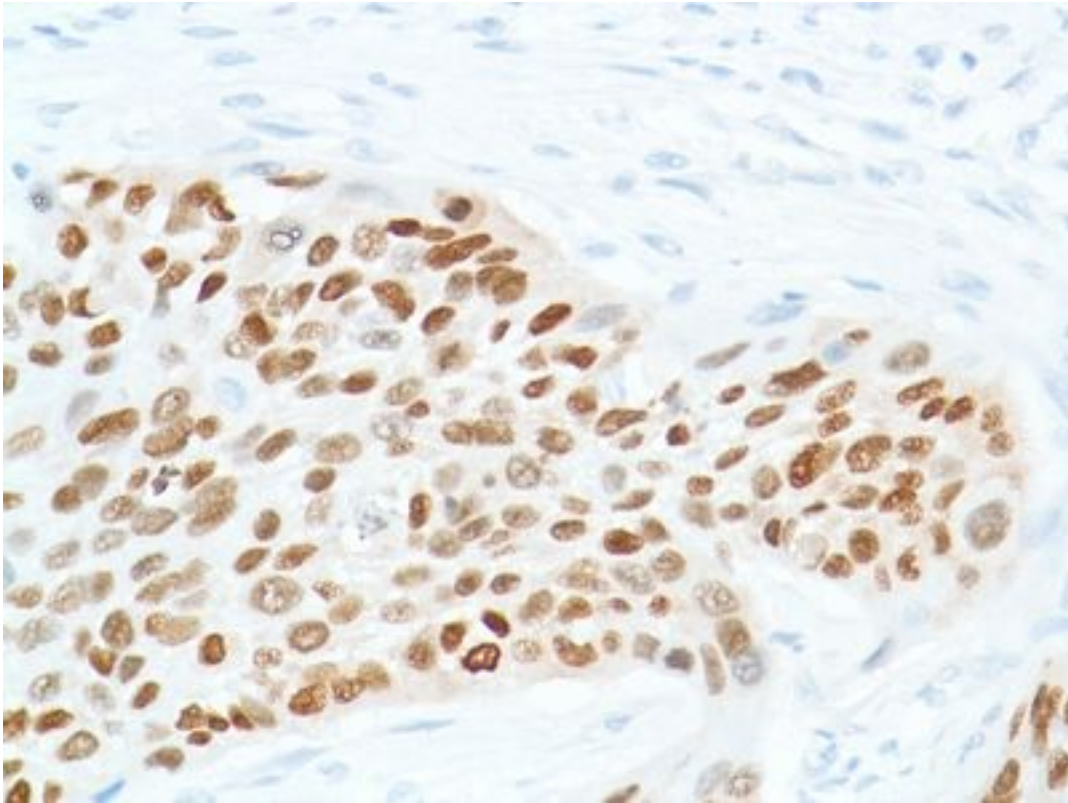
Immunohistochemistry of Human stomach adenocarcinoma 1 stained with anti-sox-2 antibody

**Immunohistochemistry Image:**



Immunohistochemistry of Human Testis stained with anti-Sox-2 antibody

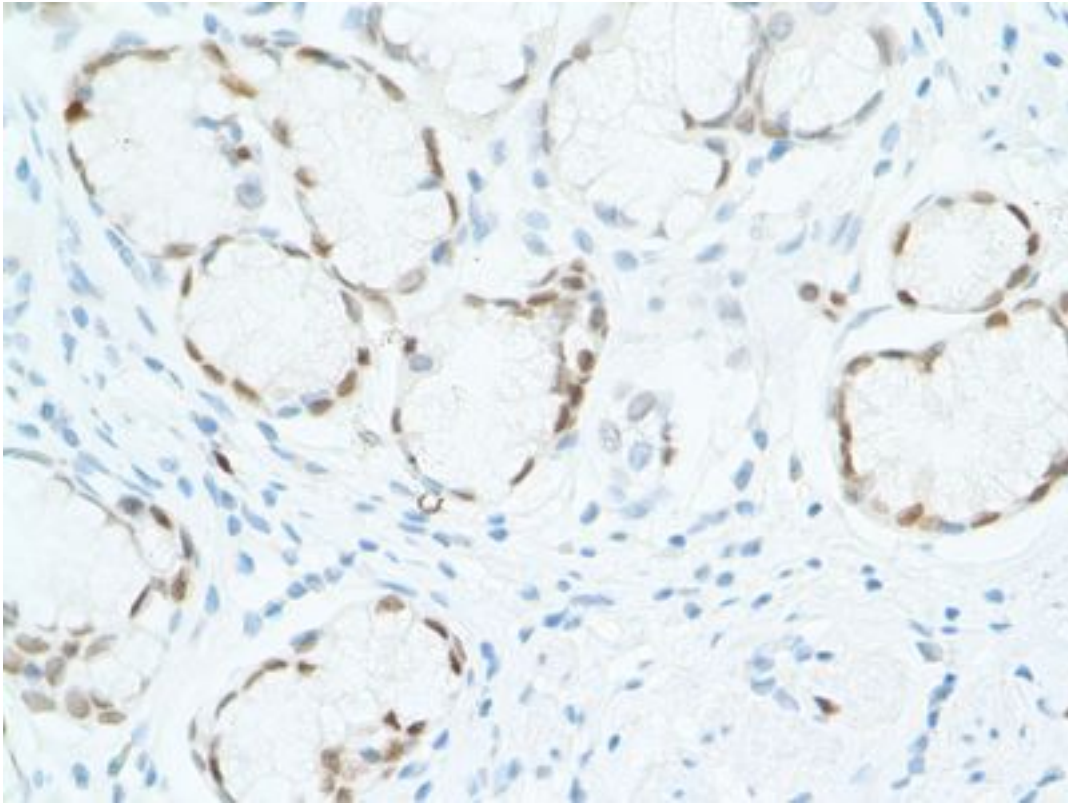
**Immunohistochemistry Image:**



Immunohistochemistry of Human Esophagus Squamous Cell Carcinoma stained with anti-Sox-2 antibody

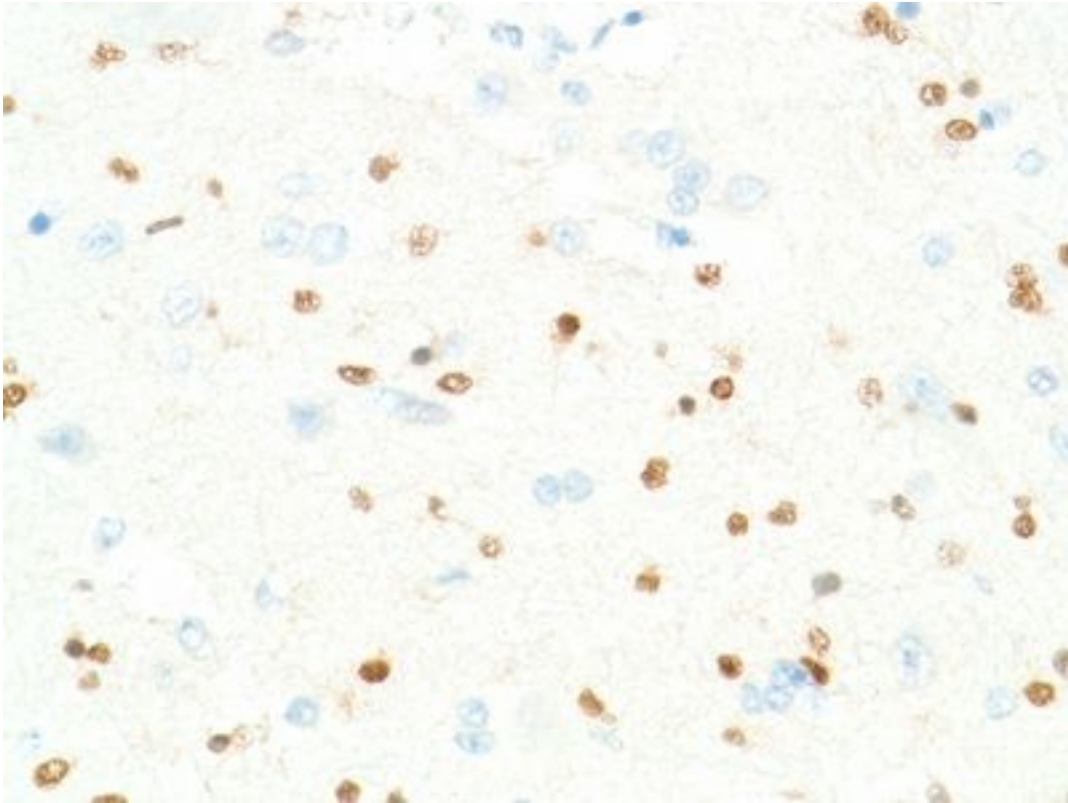


**Immunohistochemistry Image:**



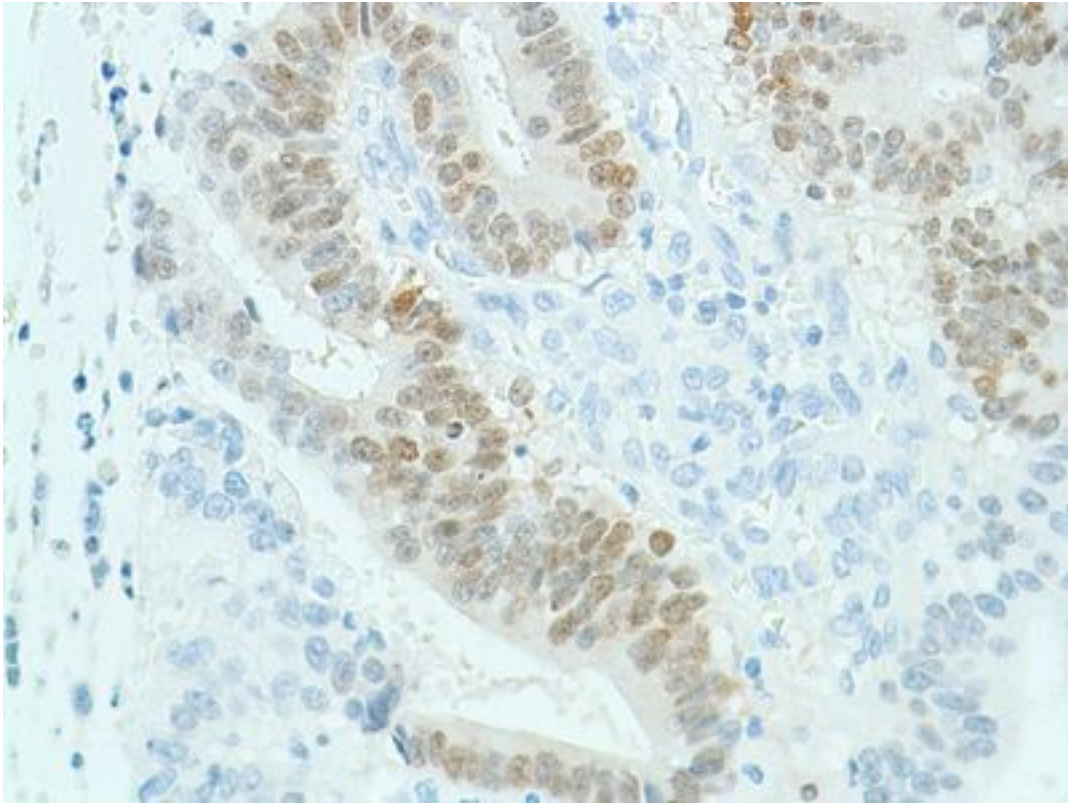
Immunohistochemistry of Human Stomach stained with anti-Sox-2 antibody

**Immunohistochemistry Image:**



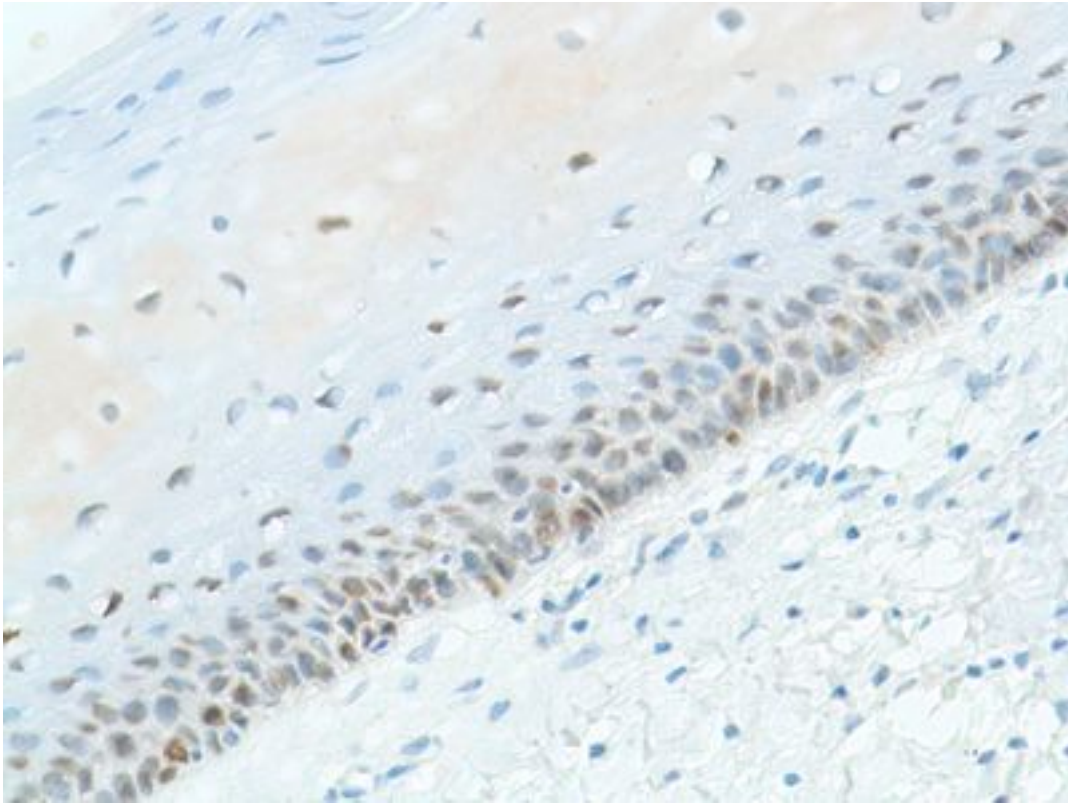
Immunohistochemistry of Human Spinal Cord stained with anti-Sox-2 antibody

**Immunohistochemistry Image:**



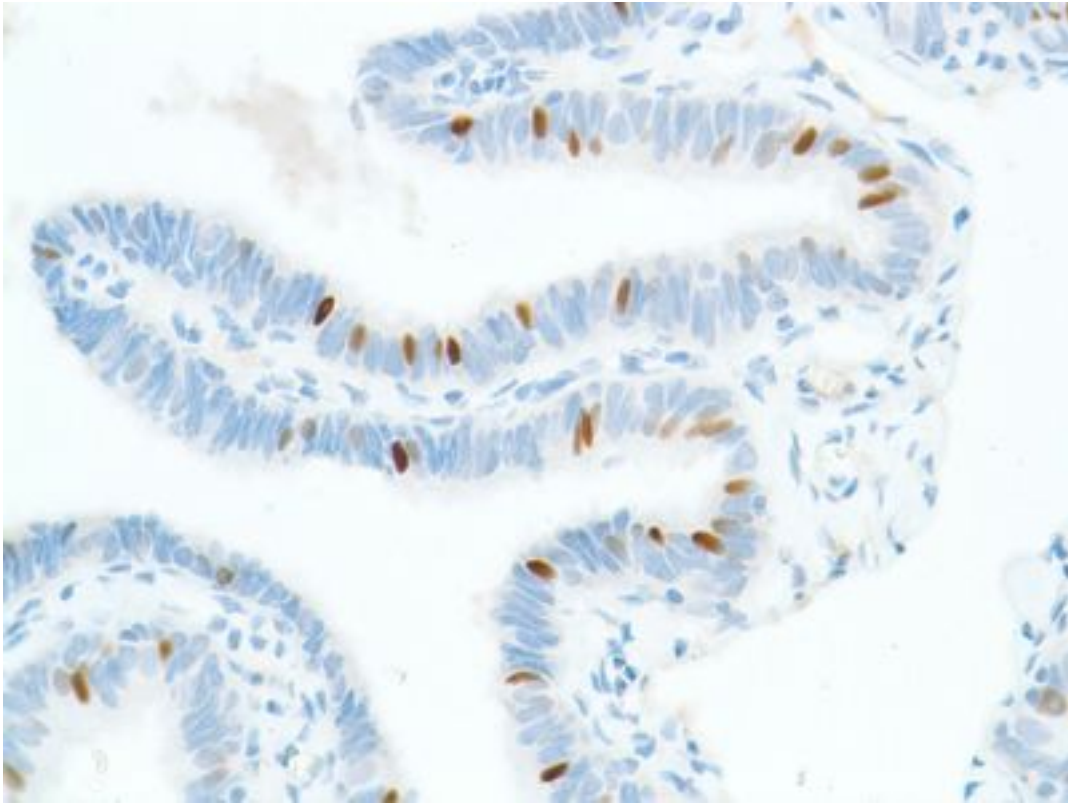
Immunohistochemistry of Human stomach adenocarcinoma stained with anti-sox-2 antibody

**Immunohistochemistry Image:**



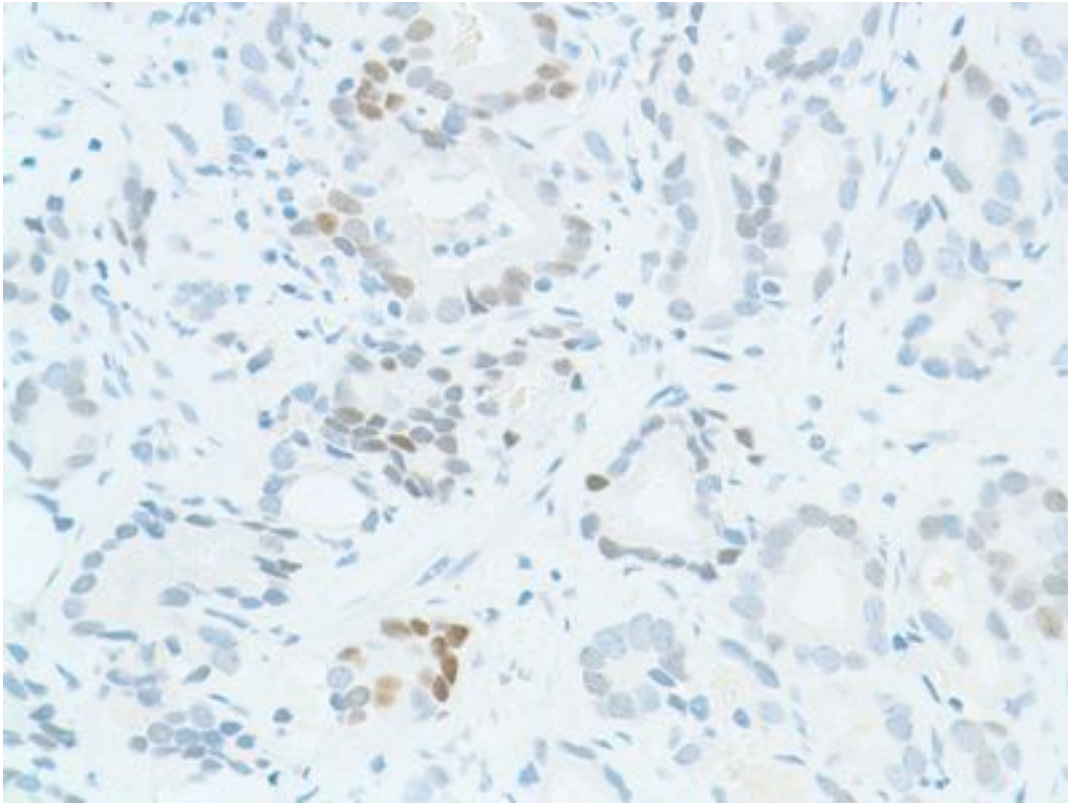
Immunohistochemistry of Human Cervix stained with anti-Sox-2 antibody

**Immunohistochemistry Image:**



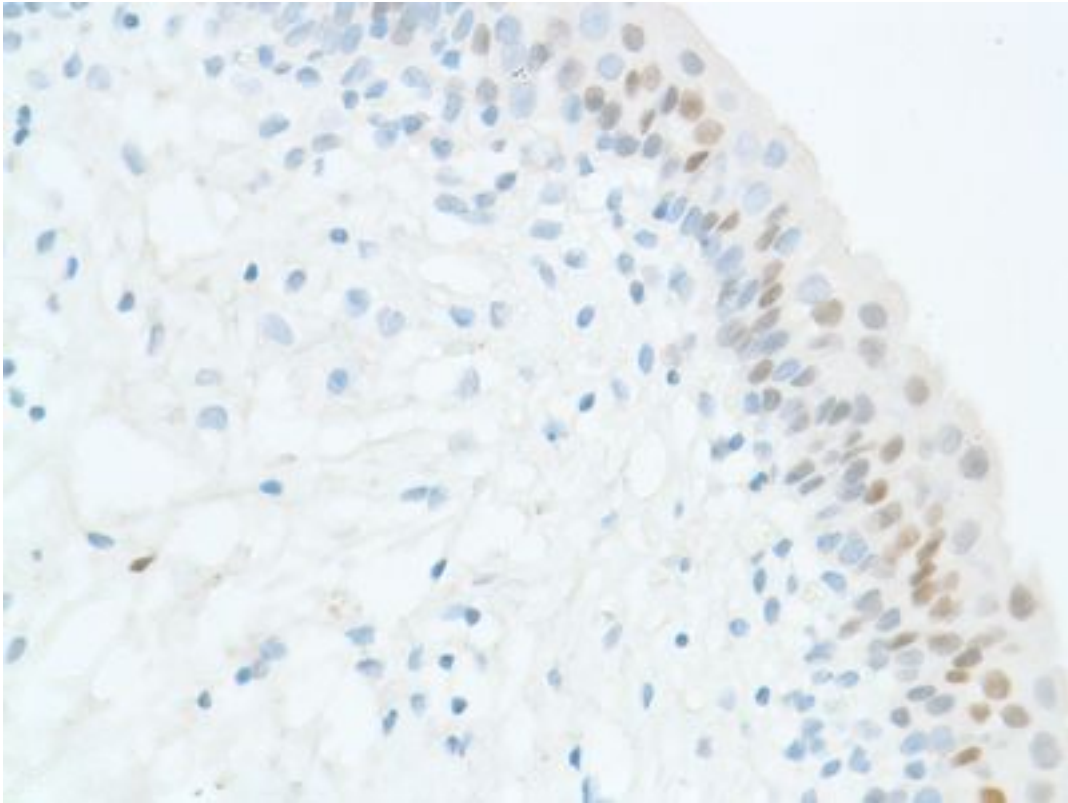
Immunohistochemistry of Human Fallopian Tube stained with anti-Sox-2 antibody

**Immunohistochemistry Image:**



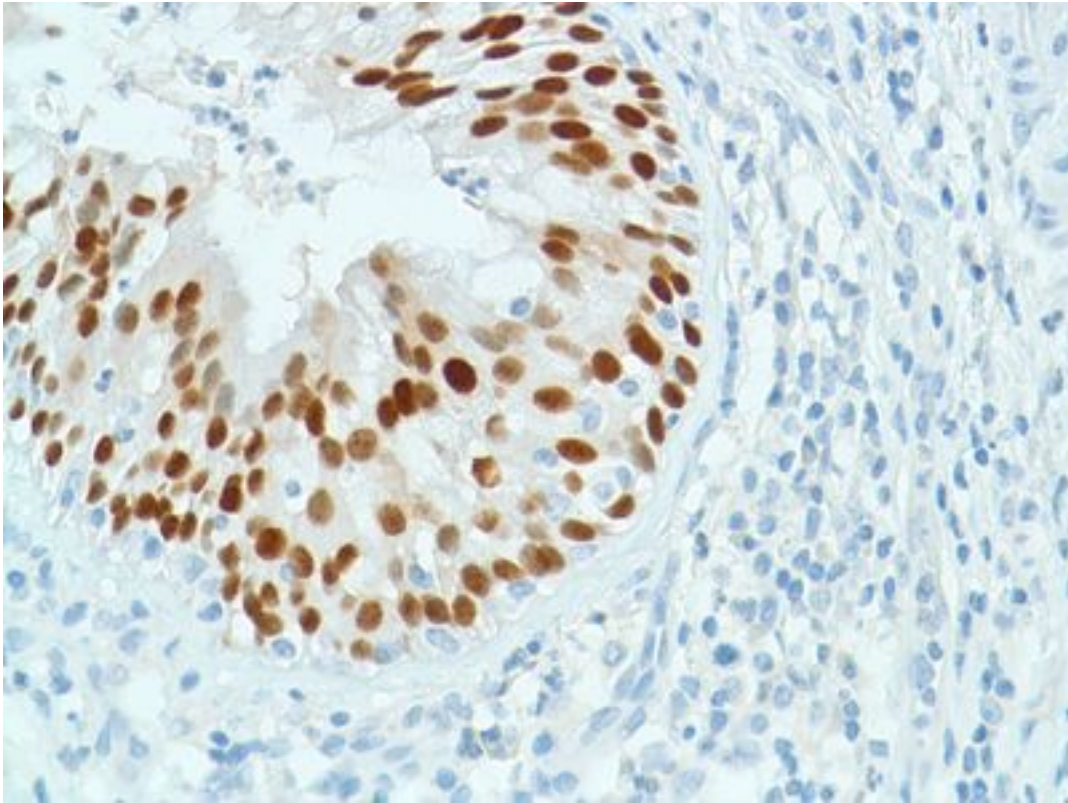
Immunohistochemistry of Human prostate adenocarcinoma stained with anti-sox-2 antibody

**Immunohistochemistry Image:**



Immunohistochemistry of Human Bladder stained with anti-Sox-2 antibody

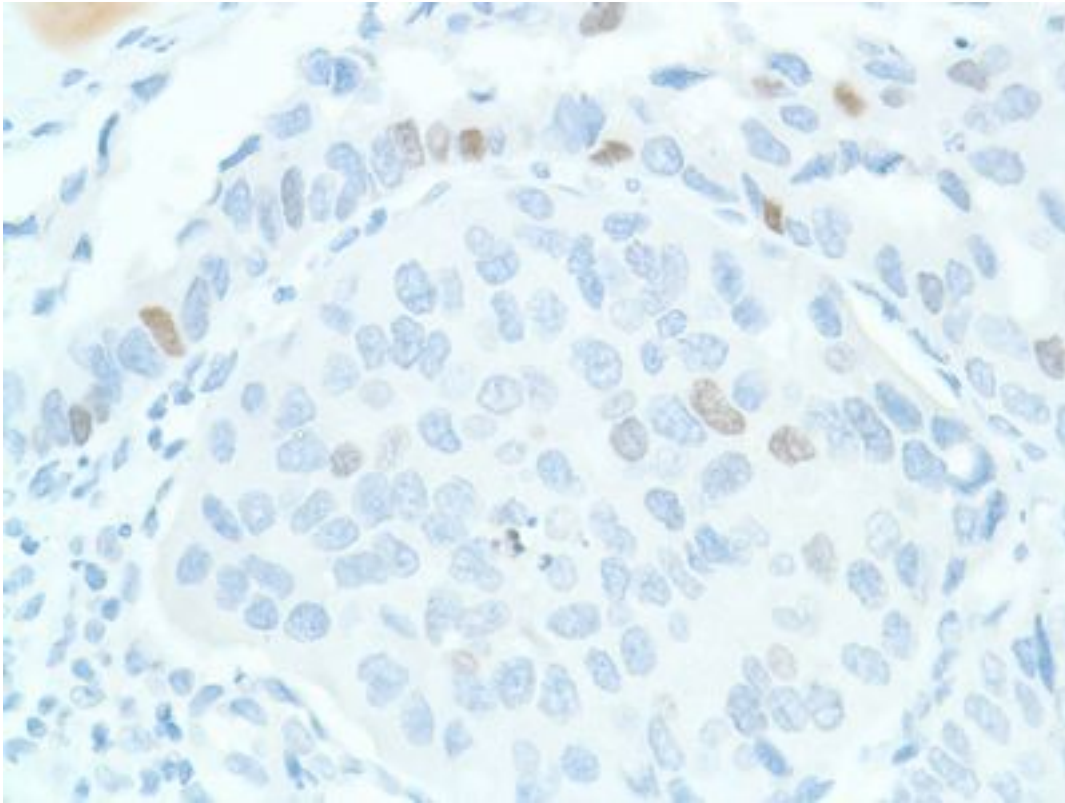
**Immunohistochemistry Image:**



Immunohistochemistry of Human bronchus stained with anti-Sox-2 antibody

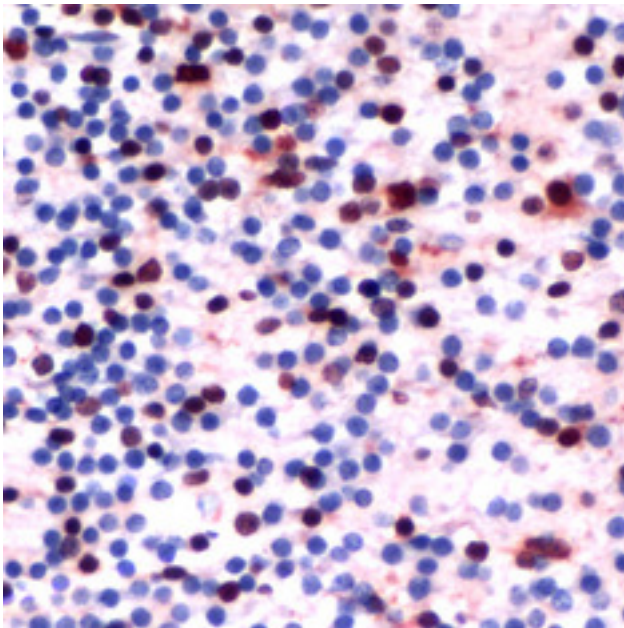


**Immunohistochemistry Image:**



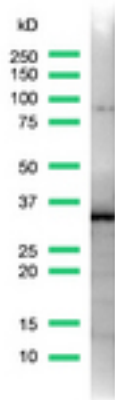
Immunohistochemistry of Human Bladder TCC stained with anti-Sox-2 antibody

**Immunohistochemistry Image:**



Immunohistochemistry of Human Newborn Brain stained with anti-SOX-2 antibody

**Western Blot Image:**



Western blot of SOX2 antibody

**Requested From:**

Japan

Laboratory Reagent For In Vitro Research Use Only

Not for resale without prior written consent from LifeSpan BioSciences, Inc.

Created on 9/27/2014

© 2014 LifeSpan BioSciences