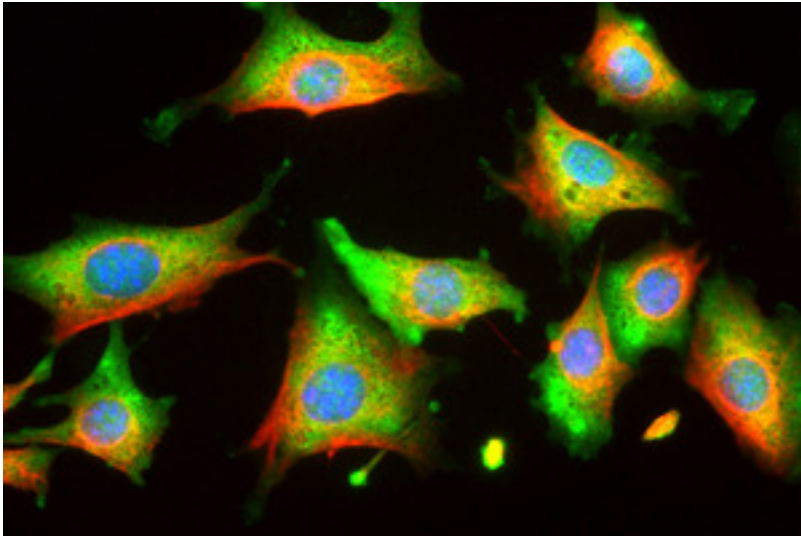


ENO1 / Alpha Enolase Mouse anti-Human Monoclonal (253) Antibody - LS-C204514 - LSBio

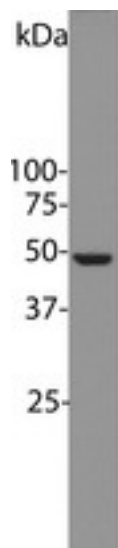
CatalogID:	LS-C204514
Target:	enolase 1, (alpha) (ENO1)
Synonyms:	ENO1 Antibody, Alpha Enolase Antibody, Alpha enolase like 1 Antibody, ENO1L1 Antibody, Enolase 1 Antibody, MBP-1 Antibody, MBPB1 Antibody, MPB1 Antibody, MYC promoter-binding protein 1 Antibody, NNE Antibody, Phosphopyruvate hydratase Antibody, Alpha-enolase Antibody, Tau-crystallin Antibody, MBP1 Antibody, MPB-1 Antibody, C-myc promoter-binding protein Antibody, Enolase 1, (alpha) Antibody, Enolase-alpha Antibody, Non-neural enolase Antibody, Plasminogen-binding protein Antibody, PPH Antibody
Host	ENO1 antibody was produced in Mouse
Clonality:	Monoclonal
Isotype:	IgG1,k
Clone Name:	253
Immunogen Species:	ENO1 / Alpha Enolase antibody was raised against Human
Immunogen:	ENO1 / Alpha Enolase antibody was raised against n-terminal 12 amino acids of bovine enolase 1 which was synthesized on a 8-amine lysine core using the multiple antigen presentation method. This produces a dendrimer presenting 8 peptides to the immune system.
Specificity:	Clone 253 is known to react with enolase 1 from human, bovine, mouse, rat and Xenopus. The antibody was tested for binding to expressed bovine enolase 1, 2 and 3 and shown to be specific for only enolase 1.
Reactivity:	Human, Mouse, Rat, Bovine, Xenopus
Purification:	Affinity purified
Presentation:	PBS, 10 mM sodium azide.
Recommended Storage:	+4°C or -20°C, Avoid repeated freezing and thawing.
Usage Summary:	Try at dilutions of 1:2000-1:5000 for immunofluorescence. For western blots try at 1:5000-1:10000. The NNE protein runs at about ~47 kDa on SDS-PAGE gels.
Uses:	ICC (1:2000 - 1:5000), Immunofluorescence (1:2000 - 1:5000), Western blot (1:5000 - 1:10000) (Optimal dilution to be determined by the researcher)
Size:	100 µl

Immunocytochemistry Image:



Rat 3T3 cells stained with ENO1 / Alpha Enolase antibody (green) and counterstained with chicken polyclonal antibody to vimentin (red) and DNA (blue). The ENO1 / Alpha Enolase antibody reveals strong cytoplasmic staining, while the vimentin antibody reveals cytoplasmic intermediate filaments.

Western Blot Image:



Blot of HeLa cell lysates probed with monoclonal antibody ENO1 / Alpha Enolase antibody. The antibody stains a single sharp band corresponding to enolase-1/alpha-enolase/NNE at about 47 kDa.

Requested From:

Japan

Laboratory Reagent For In Vitro Research Use Only

Not for resale without prior written consent from LifeSpan BioSciences, Inc.

Created on 9/27/2014

© 2014 LifeSpan BioSciences