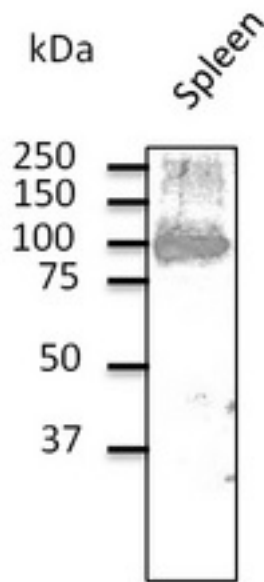


**CD19 Goat anti-Human Polyclonal (C-Terminus) Antibody - LS-C204255 - LSBio**

<b>CatalogID:</b>	LS-C204255
<b>Target:</b>	CD19 molecule
<b>Synonyms:</b>	CD19 Antibody, B-lymphocyte antigen CD19 Antibody, CD19 molecule Antibody, Differentiation antigen CD19 Antibody, T-cell surface antigen Leu-12 Antibody, B4 Antibody, CD19 antigen Antibody, CVID3 Antibody
<b>Host</b>	CD19 antibody was produced in Goat
<b>Clonality:</b>	Polyclonal
<b>Isotype:</b>	IgG
<b>Immunogen Species:</b>	CD19 antibody was raised against Human
<b>Antigen Type:</b>	Recombinant protein
<b>Immunogen:</b>	CD19 antibody was raised against purified recombinant peptide within residues 510 aa to the C-terminus of human CD19 produced in E. coli.
<b>Specificity:</b>	Using spleen and Jurkat cell lysates detects a 95 kDa band by Western blot.
<b>Epitope:</b>	C-Terminus
<b>Reactivity:</b>	Human, Monkey, Mouse, Rat, Dog
<b>Purification:</b>	Immunoaffinity purified
<b>Presentation:</b>	PBS, 20% glycerol, 0.05% sodium azide.
<b>Recommended Storage:</b>	Store at 4°C short term. Aliquot and store at -20°C long term. Avoid freeze-thaw cycles.
<b>Uses:</b>	Western blot (1:500 - 1:2000) (Optimal dilution to be determined by the researcher)
<b>Size:</b>	200 µl
<b>Concentration:</b>	3 mg/ml

**Western Blot Image:**



Western blot. Endogenous CD19 detected with CD19 antibody at 1:500 dilution. Lysate at 100 ug per lane and rabbit polyclonal to goat IgG (HRP) at 1:10000 dilution.

**Requested From:**

Japan

Laboratory Reagent For In Vitro Research Use Only

Not for resale without prior written consent from LifeSpan BioSciences, Inc.

Created on 9/27/2014

© 2014 LifeSpan BioSciences