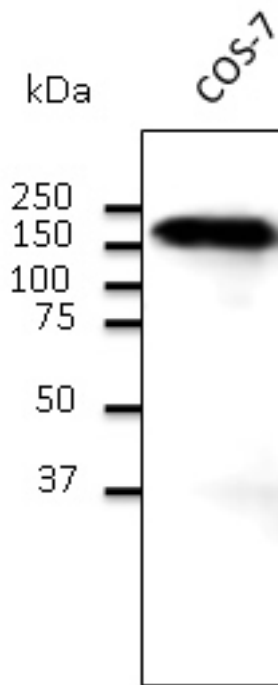


CDH1 / E Cadherin Goat anti-Human Polyclonal (aa750-850) Antibody - LS-C204222 - LSBio	
CatalogID:	LS-C204222
Target:	cadherin 1, type 1, E-cadherin (epithelial) (CDH1)
Synonyms:	CDH1 Antibody, CD324 Antibody, CDHE Antibody, Cell-CAM 120/80 Antibody, E Cadherin Antibody, E-Cadherin Antibody, ECAD Antibody, Epithelial cadherin Antibody, Arc-1 Antibody, UVO Antibody, Cadherin-1 Antibody, CAM 120/80 Antibody, CD324 antigen Antibody, LCAM Antibody, Uvomorulin Antibody
Family / Subfamily:	Cadherin / not assigned-Cadherin
Host	CDH1 antibody was produced in Goat
Clonality:	Polyclonal
Isotype:	IgG
Immunogen Species:	CDH1 / E Cadherin antibody was raised against Human
Antigen Type:	Recombinant protein
Immunogen:	CDH1 / E Cadherin antibody was raised against purified recombinant peptide derived from within residues 750 to 850 of human CDH1 produced in E. coli.
Specificity:	Detects endogenous levels of total E-cadherin protein by Western blot in the whole cell lysates (COS-7 and MDCK).
Epitope:	aa750-850
Reactivity:	Human, Monkey, Mouse, Rat, Bovine, Cat, Dog, Goat, Guinea pig, Hamster, Horse, Pig, Rabbit, Sheep, Chicken, Donkey
Purification:	Immunoaffinity purified
Presentation:	PBS, 20% glycerol, 0.05% sodium azide.
Recommended Storage:	Store at 4°C short term. Aliquot and store at -20°C long term. Avoid freeze-thaw cycles.
Uses:	Western blot (1:500 - 1:2000) (Optimal dilution to be determined by the researcher)
Size:	200 µl

Western Blot Image:



Western blot. Endogenous CDH1 detected with CDH1 / E Cadherin antibody at 1:500 dilution. Lysate at 100 ug per lane and rabbit polyclonal to goat IgG (HRP) at 1:10000 dilution.

Requested From:

Japan

Laboratory Reagent For In Vitro Research Use Only

Not for resale without prior written consent from LifeSpan BioSciences, Inc.

Created on 9/27/2014

© 2014 LifeSpan BioSciences