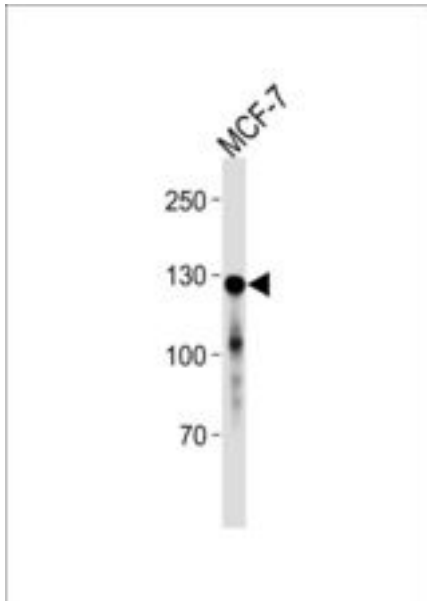


CDH1 / E Cadherin Mouse anti-Human Monoclonal (813CT11.1.3) Antibody - LS-C203946 - LSBio	
CatalogID:	LS-C203946
Target:	cadherin 1, type 1, E-cadherin (epithelial) (CDH1)
Synonyms:	CDH1 Antibody, CD324 Antibody, CDHE Antibody, Cell-CAM 120/80 Antibody, E Cadherin Antibody, E-Cadherin Antibody, ECAD Antibody, Epithelial cadherin Antibody, Arc-1 Antibody, UVO Antibody, Cadherin-1 Antibody, CAM 120/80 Antibody, CD324 antigen Antibody, LCAM Antibody, Uvomorulin Antibody
Family / Subfamily:	Cadherin / not assigned-Cadherin
Host	CDH1 antibody was produced in Mouse
Clonality:	Monoclonal
Isotype:	IgG1
Clone Name:	813CT11.1.3
Immunogen Species:	CDH1 / E Cadherin antibody was raised against Human
Antigen Type:	Recombinant protein
Immunogen:	CDH1 / E Cadherin antibody was raised against purified His-tagged CDH1 protein.
Specificity:	Human CDH1 / E Cadherin
Reactivity:	Human
Purification:	Ascites
Presentation:	Ascites, 0.09% sodium azide.
Recommended Storage:	Short term 4°C, long term aliquot and store at -20°C, avoid freeze thaw cycles.
Uses:	Western blot (1:5000) (Optimal dilution to be determined by the researcher)
Size:	100 µl

Western Blot Image:



CDH1 Antibody western blot analysis in MCF-7 cell line lysates (35 ug/lane). This demonstrates the CDH1 antibody detected the CDH1 protein (arrow).

Requested From:

Japan

Laboratory Reagent For In Vitro Research Use Only

Not for resale without prior written consent from LifeSpan BioSciences, Inc.

Created on 9/27/2014

© 2014 LifeSpan BioSciences