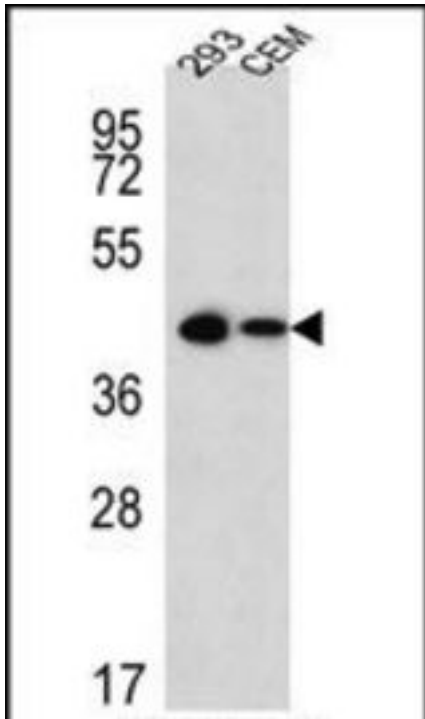


SOX2 Rabbit anti-Human Polyclonal (aa227-262) Antibody - LS-C203702 - LSBio

CatalogID:	LS-C203702
Target:	SRY (sex determining region Y)-box 2 (SOX2)
Synonyms:	SOX2 Antibody, MCOPS3 Antibody, Transcription factor SOX2 Antibody, ANOP3 Antibody, Transcription factor SOX-2 Antibody, SRY-related HMG-box gene 2 Antibody
Family / Subfamily:	Transcription factor
Host	SOX2 antibody was produced in Rabbit
Clonality:	Polyclonal
Immunogen Species:	SOX2 antibody was raised against Human
Antigen Type:	Synthetic peptide
Immunogen:	SOX2 antibody was raised against kLH conjugated synthetic peptide between amino acids 227-262 from C-terminal region of human Sox2-pS246-pS249-pS250-pS251.
Specificity:	Human SOX2
Epitope:	aa227-262
Reactivity:	Human
Predicted Reactivity:	Mouse
Purification:	Immunoaffinity purified
Presentation:	PBS, 0.09% sodium azide.
Recommended Storage:	Short term 4°C, long term aliquot and store at -20°C, avoid freeze thaw cycles.
Uses:	Western blot (1:1000) (Optimal dilution to be determined by the researcher)
Size:	400 µl

Western Blot Image:



Sox2-pS246-pS249-pS250--pS251 Antibody western blot analysis in 293,CEM cell line lysates (15 ug/lane).This demonstrates the Sox2 antibody detected the Sox2 protein (arrow).

Requested From:

Japan

Laboratory Reagent For In Vitro Research Use Only

Not for resale without prior written consent from LifeSpan BioSciences, Inc.

Created on 9/27/2014

© 2014 LifeSpan BioSciences