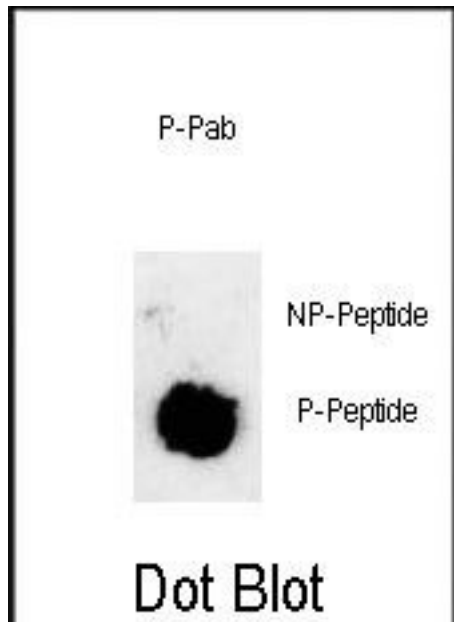


SOX2 Rabbit anti-Human Polyclonal (pS251) Antibody - LS-C203692 - LSBio	
CatalogID:	LS-C203692
Target:	SRY (sex determining region Y)-box 2 (SOX2)
Synonyms:	SOX2 Antibody, MCOPS3 Antibody, Transcription factor SOX2 Antibody, ANOP3 Antibody, Transcription factor SOX-2 Antibody, SRY-related HMG-box gene 2 Antibody
Family / Subfamily:	Transcription factor
Host	SOX2 antibody was produced in Rabbit
Clonality:	Polyclonal
Immunogen Species:	SOX2 antibody was raised against Human
Antigen Type:	Synthetic phospho-peptide
Immunogen:	SOX2 antibody was raised against kLH conjugated synthetic phosphopeptide corresponding to amino acid residues surrounding S251 of human Sox2.
Specificity:	Human SOX2
Epitope:	pS251
Reactivity:	Human
Predicted Reactivity:	Mouse
Purification:	Immunoaffinity purified
Presentation:	PBS, 0.09% sodium azide.
Recommended Storage:	Short term 4°C, long term aliquot and store at -20°C, avoid freeze thaw cycles.
Uses:	Dot Blot (1:500) (Optimal dilution to be determined by the researcher)
Size:	400 µl

Dot Blot Image:



Dot blot analysis of anti-phospho-Sox2-pS251 Phospho-specific antibody on nitrocellulose membrane. 50ng of Phospho-peptide or Non Phospho-peptide per dot were adsorbed. Antibody working concentrations are 0.6 ug per ml.

Requested From:

Japan

Laboratory Reagent For In Vitro Research Use Only

Not for resale without prior written consent from LifeSpan BioSciences, Inc.

Created on 9/27/2014

© 2014 LifeSpan BioSciences