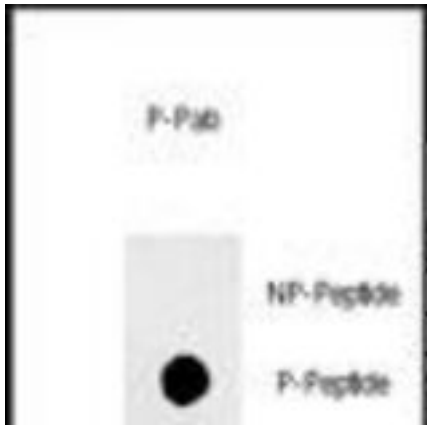


SOX2 Rabbit anti-Human Polyclonal (pS249) Antibody - LS-C203691 - LSBio	
<b>CatalogID:</b>	LS-C203691
<b>Target:</b>	SRY (sex determining region Y)-box 2 (SOX2)
<b>Synonyms:</b>	SOX2 Antibody, MCOPS3 Antibody, Transcription factor SOX2 Antibody, ANOP3 Antibody, Transcription factor SOX-2 Antibody, SRY-related HMG-box gene 2 Antibody
<b>Family / Subfamily:</b>	Transcription factor
<b>Host</b>	SOX2 antibody was produced in Rabbit
<b>Clonality:</b>	Polyclonal
<b>Immunogen Species:</b>	SOX2 antibody was raised against Human
<b>Antigen Type:</b>	Synthetic phospho-peptide
<b>Immunogen:</b>	SOX2 antibody was raised against kLH conjugated synthetic phosphopeptide corresponding to amino acid residues surrounding S249 of human Sox2.
<b>Specificity:</b>	Human SOX2
<b>Epitope:</b>	pS249
<b>Reactivity:</b>	Human
<b>Predicted Reactivity:</b>	Mouse
<b>Purification:</b>	Immunoaffinity purified
<b>Presentation:</b>	PBS, 0.09% sodium azide.
<b>Recommended Storage:</b>	Short term 4°C, long term aliquot and store at -20°C, avoid freeze thaw cycles.
<b>Uses:</b>	Dot Blot (1:500) (Optimal dilution to be determined by the researcher)
<b>Size:</b>	400 µl

**Dot Blot Image:**



Dot blot analysis of anti-phospho-Sox2-pS249 Phospho-specific antibody on nitrocellulose membrane. 50ng of Phospho-peptide or Non Phospho-peptide per dot were adsorbed. Antibody working concentrations are 0.5 ug per ml.

**Requested From:**

Japan

Laboratory Reagent For In Vitro Research Use Only

Not for resale without prior written consent from LifeSpan BioSciences, Inc.

Created on 9/27/2014

© 2014 LifeSpan BioSciences