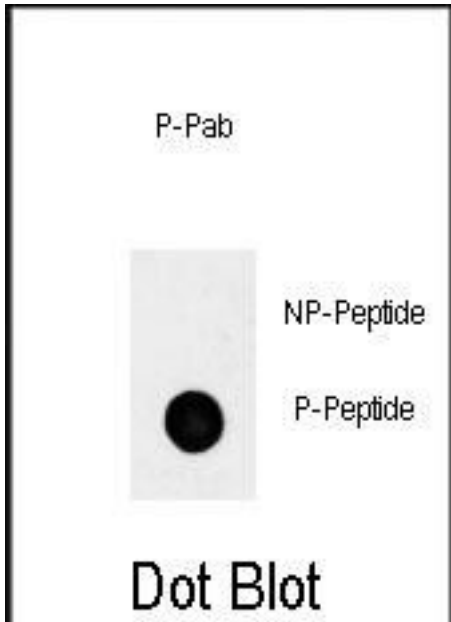


POU5F1 / OCT4 Rabbit anti-Human Polyclonal (pS236) Antibody - LS-C203688 - LSBio

CatalogID:	LS-C203688
Target:	POU class 5 homeobox 1 (POU5F1)
Synonyms:	POU5F1 Antibody, Oct-4 Antibody, OCT3 Antibody, OCT4 Antibody, OTF4 Antibody, POU class 5 homeobox 1 Antibody, Octamer-binding protein 3 Antibody, Octamer-binding protein 4 Antibody, OTF-3 Antibody, Oct-3 Antibody, OTF3 Antibody
Host	POU5F1 antibody was produced in Rabbit
Clonality:	Polyclonal
Immunogen Species:	POU5F1 / OCT4 antibody was raised against Human
Antigen Type:	Synthetic phospho-peptide
Immunogen:	POU5F1 / OCT4 antibody was raised against kLH conjugated synthetic phosphopeptide corresponding to amino acid residues surrounding S236 of human OCT4.
Specificity:	Human POU5F1 / OCT4
Epitope:	pS236
Reactivity:	Human
Predicted Reactivity:	Mouse, Bovine, Pig
Purification:	Immunoaffinity purified
Presentation:	PBS, 0.09% sodium azide.
Recommended Storage:	Short term 4°C, long term aliquot and store at -20°C, avoid freeze thaw cycles.
Uses:	Dot Blot (1:500) (Optimal dilution to be determined by the researcher)
Size:	400 µl

Dot Blot Image:



Dot blot analysis of anti-phospho-OCT4-S236 Phospho-specific antibody on nitrocellulose membrane. 50ng of Phospho-peptide or Non Phospho-peptide per dot were adsorbed. Antibody working concentrations are 0.5 ug per ml.

Requested From:

Japan

Laboratory Reagent For In Vitro Research Use Only

Not for resale without prior written consent from LifeSpan BioSciences, Inc.

Created on 9/27/2014

© 2014 LifeSpan BioSciences