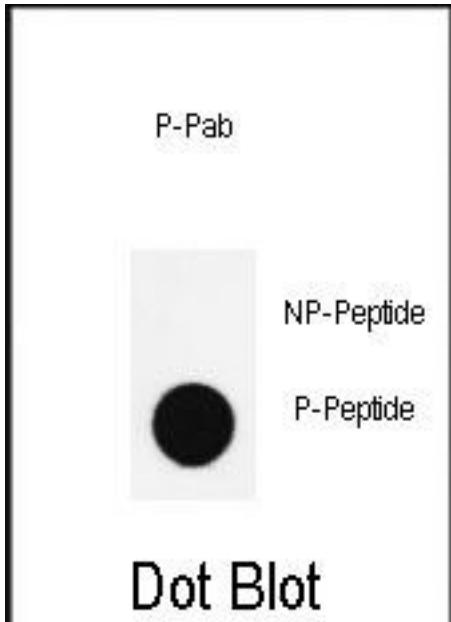


NANOG Rabbit anti-Human Polyclonal (pS285) Antibody - LS-C203687 - LSBio

CatalogID:	LS-C203687
Target:	Nanog homeobox
Synonyms:	NANOG Antibody, Nanog homeobox Antibody, NANOGP8 Antibody, HNanog Antibody, Homeobox protein NANOG Antibody
Host	NANOG antibody was produced in Rabbit
Clonality:	Polyclonal
Immunogen Species:	NANOG antibody was raised against Human
Antigen Type:	Synthetic phospho-peptide
Immunogen:	NANOG antibody was raised against kLH conjugated synthetic phosphopeptide corresponding to amino acid residues surrounding S285 of human Nanog.
Specificity:	Human Nanog
Epitope:	pS285
Reactivity:	Human
Purification:	Immunoaffinity purified
Presentation:	PBS, 0.09% sodium azide.
Recommended Storage:	Short term 4°C, long term aliquot and store at -20°C, avoid freeze thaw cycles.
Uses:	Dot Blot (1:500) (Optimal dilution to be determined by the researcher)
Size:	400 µl

Dot Blot Image:



Dot blot analysis of anti-Phospho-Nanog-S285 Antibody on nitrocellulose membrane. 50ng of Phospho-peptide or Non Phospho-peptide per dot were adsorbed. Antibody working concentrations are 0.5 ug per ml.

Requested From:

Japan

Laboratory Reagent For In Vitro Research Use Only

Not for resale without prior written consent from LifeSpan BioSciences, Inc.

Created on 9/27/2014

© 2014 LifeSpan BioSciences