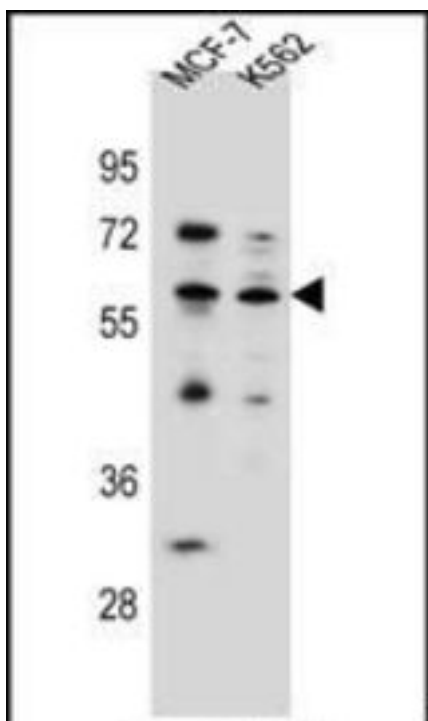


KLF4 Rabbit anti-Human Polyclonal (aa283-314) Antibody - LS-C203673 - LSBio

CatalogID:	LS-C203673
Target:	Kruppel-like factor 4 (gut) (KLF4)
Synonyms:	KLF4 Antibody, EZF Antibody, GKLF Antibody, Kruppel-like factor 4 (gut) Antibody, Hezf Antibody, Krueppel-like factor 4 Antibody
Host	KLF4 antibody was produced in Rabbit
Clonality:	Polyclonal
Immunogen Species:	KLF4 antibody was raised against Human
Antigen Type:	Synthetic peptide
Immunogen:	KLF4 antibody was raised against kLH conjugated synthetic peptide between amino acids 283-314 from internal region of human KLF4.
Specificity:	Human KLF4
Epitope:	aa283-314
Reactivity:	Human
Purification:	Ammonium sulfate precipitation
Presentation:	PBS, 0.09% sodium azide.
Recommended Storage:	Short term 4°C, long term aliquot and store at -20°C, avoid freeze thaw cycles.
Uses:	Western blot (1:1000) (Optimal dilution to be determined by the researcher)
Size:	400 µl

Western Blot Image:



KLF4 Antibody (Center) western blot analysis in MCF-7,K562 cell line lysates (35 ug/lane).This demonstrates the KLF4 antibody detected the KLF4 protein (arrow).

Requested From:

Japan

Laboratory Reagent For In Vitro Research Use Only

Not for resale without prior written consent from LifeSpan BioSciences, Inc.

Created on 9/27/2014

© 2014 LifeSpan BioSciences