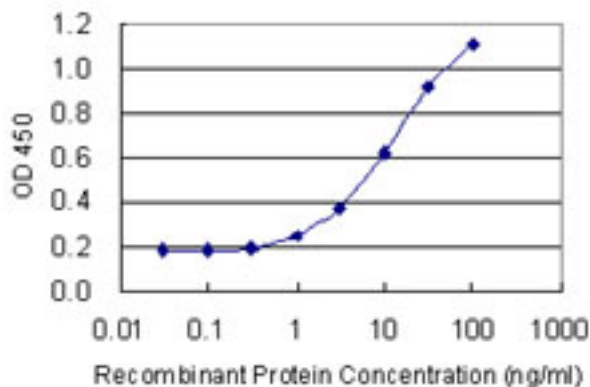


RLF Mouse anti-Human Monoclonal (2G2) Antibody - LS-C198091 - LSBio

<b>CatalogID:</b>	LS-C198091
<b>Target:</b>	rearranged L-myc fusion (RLF)
<b>Synonyms:</b>	RLF Antibody, Zinc finger protein Rlf Antibody, Zn-15 related Antibody, Rearranged L-myc fusion Antibody, Zn-15-related protein Antibody, ZN-15L Antibody, ZNF292L Antibody
<b>Host</b>	RLF antibody was produced in Mouse
<b>Clonality:</b>	Monoclonal
<b>Isotype:</b>	IgG2a,k
<b>Clone Name:</b>	2G2
<b>Immunogen Species:</b>	RLF antibody was raised against Human
<b>Antigen Type:</b>	GST fusion protein
<b>Immunogen:</b>	RLF antibody was raised against rLF (NP_036553.1, aa1805-1913 partial recombinant protein with GST tag. MW of the GST tag alone is 26 KDa.
<b>Specificity:</b>	Human RLF
<b>Reactivity:</b>	Human
<b>Purification:</b>	Protein A purified
<b>Presentation:</b>	PBS, pH 7.2
<b>Recommended Storage:</b>	Store at -20°C or lower. Aliquot to avoid repeated freezing and thawing.
<b>Usage Summary:</b>	Sandwich ELISA: Recombinant protein. Western Blot: Recombinant protein.
<b>Uses:</b>	Western blot, ELISA (Optimal dilution to be determined by the researcher)
<b>Size:</b>	100 µg

ELISA Image:



Detection limit for recombinant GST tagged RLF is 0.3 ng/ml as a capture antibody.

<b>Requested From:</b>	Japan
Laboratory Reagent For In Vitro Research Use Only	
Not for resale without prior written consent from LifeSpan BioSciences, Inc.	
Created on 9/27/2014	
© 2014 LifeSpan BioSciences	